

# VOLUNTEER DELAWARE 50+

*New Castle County Edition*



## COMMUNITY RESOURCES & OPPORTUNITIES



Volunteer Delaware 50+ is a statewide program offered through the State

Office of Volunteerism within the Division of State Service Centers.

The mission is to engage persons 50 and older in volunteer service, to meet critical community needs and to provide a high quality experience that will enrich the lives of Volunteers.

**ENROLL TODAY!**

**[Volunteer.Delaware.gov](https://Volunteer.Delaware.gov/Volunteer-Delaware50)**  
**[/Volunteer-Delaware50](https://Volunteer.Delaware.gov/Volunteer-Delaware50)**

**What is Volunteer  
Delaware 50+?**  
**Pages 1 – 3**

**March Birthdays**  
**Page 4**

**Spotlight**  
**Pages 5**

**News From Our  
Partners & Volunteer  
Opportunities**  
**Pages 6-30**

**Community  
Resources**  
**Page 31-32**





302-255-9882 • [Volunteer.Delaware.gov](http://Volunteer.Delaware.gov)

## New Castle County Community Partners

<b>A Matter of Balance</b> 302-515-3026	<b>Delaware Hospice</b> 302-478-5707	<b>Senior Surfers</b> 302-737-2336
<b>Alzheimer's Association</b> 215-561-2919	<b>DE Museum of Natural History</b> 302-658-9111X 324	<b>Patches of Love</b> 302-255-9746
<b>American Cancer Society</b> 1-800-227-2345	<b>Delaware Theatre Company</b> 302-594-1100	<b>PAWS for People</b> 302-351-5622
<b>American Red Cross of Delmarva</b> 302-656-6620	<b>Easterseals Delaware</b> 302-324-4444	<b>People to People: Delaware Chapter</b> <a href="mailto:info@ptpde.org">info@ptpde.org</a>
<b>B'nai B'rith House</b> 302-798-6846	<b>Family Promise of Northern NCC</b> 302-998-2222	<b>Read Aloud Delaware</b> 302-656-5256
<b>Big Brothers Big Sisters of Delaware</b> 302-998-3577 ext 105	<b>Food Bank of Delaware</b> 302-292-1305 ext 254	<b>Ronald McDonald House of DE</b> 302-428-5340
<b>Blood Bank of Delmarva</b> 302-737-8405	<b>Forget Me Not Families</b> 302-416-2897	<b>Special Olympics Delaware</b> 302-831-4653
<b>Brandywine Valley SPCA</b> 302-858-4202	<b>Grand Opera House</b> 302-658-7897	<b>St. Anthony's Community Center</b> 302-421-3721
<b>CareWear Project</b> <b>Knitters and Crocheters</b> <b>Bags2Mats for the Homeless</b> 302-255-9746	<b>Habitat for Humanity of NCC</b> Construction Site: 302-652-0365 ReStore Wilmington: 302-652-5181 ReStore Middletown: 302-449-1414	<b>City Fare Meals on Wheels</b> 302-421-3734
<b>CASA (Office of Child Advocate)</b> <b>Count Appnt. Spec. Advo.</b> 302-255-1730	<b>Hagley Museum &amp; Library</b> 302-658-2400 X257	<b>St. Anthony's Senior Center</b> 302-421-3735
<b>Charity Crossing</b> <a href="mailto:info@charitycrossing.org">info@charitycrossing.org</a>	<b>Literacy Delaware</b> 302-658-5624	<b>Stockings for Soldiers Delaware Inc.</b> <a href="mailto:info@StockingsForSoldiers.org">info@StockingsForSoldiers.org</a>
<b>Channie P. Bradley Senior Services</b> 215-520-7525	<b>Lutheran Community Services</b> 302-654-8886	<b>Supporting Kidds Inc.</b> 302-235-5544
<b>Child, Inc.</b> 302-762-8989	<b>Lutheran Senior Services Inc.</b> 302-652-3737	<b>The Ministry of Caring</b> <b>Emmanuel Dining Room E/S/W</b> 302-652-3228
<b>Children &amp; Families First</b> 302-777-9757	<b>MOT Jean Birch Senior Center</b> 302-378-4758	<b>Thomas Edison Charter School</b> 302-778-1101
<b>Children Empowered by Love, Inc.</b> <a href="mailto:childrenempoweredbylove@comcast.net">childrenempoweredbylove@comcast.net</a>	<b>NAMI DE (National Alliance on Mental Illness- 302-427-0787)</b>	<b>Tri-State Bird Rescue &amp; Research Inc.</b> 302-737-9543 x102
<b>ChristianaCare</b> 302-733-1284 <b>Wilmington Hospital</b> 302-428-2206	<b>New Castle County</b> <b>Absalom Jones Senior Center</b> 302-995-7636 <b>Depart. of Community Services</b> 302-395-5640 <b>New Castle County Libraries</b> 302-395-5617 <b>NCC Senior Roll Call Lifeline</b> (302) 395-8159	<b>United Way of Delaware</b> 302-573-3705
<b>ChristianaCare in Collaboration with AccentCare (formerly known as Seasons Hospice)</b> 302-533-3800	<b>Nemours Children Hospital</b> 302-651-6096	<b>Volunteer Delaware</b> 302-381-3594
<b>Connecting Generations</b> 302-656-2122 x0010	<b>New Castle Senior Center</b> 302-326-4209	<b>Volunteer Delaware 50+ NCC Advisory Council</b> 302-515-3026
<b>ContactLifeline</b> 302-761-9800 ex. 1002	<b>Newark Senior Center</b> 302-737-2336 <b>Meeting of the Minds</b> <b>Newark Meals on Wheels</b> 302-737-5747	<b>Warriors Helping Warriors</b> 302-696-2320
<b>Delaware Center for Horticulture</b> 302-658-6262 ext. 108		<b>Wilmington Senior Center</b> 302-651-3400
<b>Delaware Ecumenical Council on Children and Families</b> 302-225-1040		<b>Winterthur Museum, Garden &amp; Lib.</b> 1-800-448-3883

For more information on how to become an official Volunteer Delaware 50+ Community Partner, please call 302-255-9746 or email [Guadalupe.Murphy@delaware.gov](mailto:Guadalupe.Murphy@delaware.gov)





Volunteer Delaware 50+ focuses on helping individuals 50 years of age and older, use the skills and talents learned over the years, or develop new ones while serving in a variety of volunteer activities within the community. Volunteer Delaware 50+ volunteers determine their preferred level of commitment. Come join the more than 2,500 Volunteer Delaware 50+ members and start making a difference today!

### What are the benefits of becoming a Volunteer Delaware 50+ member?

- All members receive supplemental insurance protection in case anything happens **while** they are volunteering with one of our community partners (excess volunteer liability insurance & excess automobile liability insurance)
- Opportunity for outstanding volunteers to attend a free recognition luncheon and enter to win door prizes (must meet required hours)
- Opportunity to receive a monthly listing of one-time volunteer projects, upcoming events and ongoing volunteer opportunities (sent via email)
- Invitation to attend free educational workshops on topics pertaining to the 50+ community (sent via email)
- Tracking of hours and years of service

### Why do you collect my volunteer hours?

- Helps us to qualify for grants and places us in a better position to advocate for continued funding, not only for our program but also for our community partners
- Helps us to quantify all the amazing volunteer work Delawareans are doing for our state/in our communities
- Helps us to identify and recognize our outstanding volunteers through our annual Volunteer Recognition Luncheon

### Are you already a volunteer with one of our community partners and would like to also be a member of Volunteer Delaware 50+?

We are always looking-for and inviting non-profit organizations to join us and become a community partner in order to offer even more opportunities to our members. If you are already a volunteer with one or more of our community partner and would like to also become a member of Volunteer Delaware 50+ please contact your local office.

**New Castle County: please call 302-255-9746 or email [Guadalupe.Murphy@delaware.gov](mailto:Guadalupe.Murphy@delaware.gov)**

*For more information please visit [Volunteer.Delaware.gov/Volunteer-Delaware50](http://Volunteer.Delaware.gov/Volunteer-Delaware50)*







**Marcia Barone**  
**Lois Barth**  
**David Boyer**  
**Catherine Campbell**  
**Virginia Crane**  
**Olga Crowther**  
**Susan Fuesler**  
**Chris Stranahan**  
**Dolores Thackrah**  
**Phyllis Waecker**  
**Kathryn Wayne**  
**Marjorie Miles**  
**Ronald Pierce**

**Donna Rhine**  
**Susan Rosenthal**  
**Ysidra Santos**  
**Elizabeth Shook**  
**Sandra Slemko**  
**Janet Stephens**  
**Patricia Goldstein**  
**Steven Greengold**  
**Dawn Heinz**  
**Susan Kadel**  
**Nancy Kritzar Berlin**  
**Neal Lerner**  
**Mary Lynch**  
**Shirlee Maness**  
**Sandra Meridith**  
**Kathleen Zierdt**





1 skein



=

\$5.00

1 HAT ....

for someone going through chemo  
for a child living in poverty  
for a homeless individual  
for a child in foster care  
for a teen mommy and her newborn  
for a victim of domestic violence  
for a forgotten senior

Will you join us in supporting the CareWear Project?

VISIT: [tinyurl.com/domore24-carewear](https://tinyurl.com/domore24-carewear)





**A NOTE FROM OUR PARTNER**

## 24 Hours of Giving to Nonprofits in the First State

March 7, 2024 at 6:00 pm to  
March 8, 2024 at 6:00 pm

Do More 24 Delaware is designed to help nonprofits increase capacity and engage new donors. This is a collaborative effort to celebrate philanthropy and spur impact in the Delaware community. To learn more, visit [domore24delaware.org](https://domore24delaware.org).

**Support Your Favorite Nonprofits on Delaware's Biggest Day of Giving!**  
**For Nonprofits: <https://www.domore24delaware.org/signup>**



UNITED WAY  
OF DELAWARE



SPURIMPACT

Visit [DEGives.org](https://DEGives.org) to support these and other Delaware nonprofits year round.



**A NOTE FROM OUR PARTNER**

# VOLUNTEERS NEEDED!





**CALLING ALL VOLUNTEERS!  
WE NEED YOUR HELP!**

Our organization is looking for individuals to help pack and load a truck. Must be 16 years old and up.

March 18th at 6:30 PM  
Delaware State Fairgrounds  
Harrington, DE 19952

302-416-2897  
[donate@forgetmentofamiliesde.com](mailto:donate@forgetmentofamiliesde.com)



**For more information, please contact  
Volunteer Delaware 50+ at 302-255-9746 or email  
[Guadalupe.Murphy@delaware.gov](mailto:Guadalupe.Murphy@delaware.gov)**



**A NOTE FROM OUR PARTNER**

# DO YOU HAVE CONCERNS ABOUT FALLING



## A MATTER OF BALANCE

MANAGING CONCERNS ABOUT FALLS

**CONCERNED ABOUT FALLS? A MATTER OF BALANCE HELPS MANAGE FALLS AND BOOSTS ACTIVITY LEVELS FOR OLDER ADULTS.**

**This program emphasizes practical strategies to manage falls.**

**YOU WILL LEARN TO:**  
view falls as controllable  
set goals for increasing activity  
make changes to reduce fall risks at home  
exercise to increase strength and balance

**WHO SHOULD ATTEND?**  
anyone concerned about falls  
anyone interested in improving balance, flexibility and strength  
anyone who has fallen in the past  
anyone who has restricted activities because of falling concerns

**FREE  
CLASSES ONCE A WEEK FOR 8 WEEKS**

To learn more about the  
A Matter of Balance classes or  
how to become a certified  
coach, please contact  
Volunteer Delaware 50+ at  
302-255-9101 or email  
[Arundhati.Ghosh@delaware.gov](mailto:Arundhati.Ghosh@delaware.gov)

 **VOLUNTEER  
DELAWARE 50+**



## A NOTE FROM OUR PARTNER

DELAWARE SENIOR  
MEDICARE PATROL



# VOLUNTEERS NEEDED



image:  
Freepik.com

**HELP DELAWARE  
PREVENT, DETECT,  
REPORT MEDICARE  
FRAUD**

## INTERESTED IN JOINING OUR MISSION?

For more information,  
call 302-255-9746 or email  
[Guadalupe.Murphy@delaware.gov](mailto:Guadalupe.Murphy@delaware.gov)

### WHAT WE NEED:

- ASSIST WITH ADMINISTRATIVE WORK
- ACT AS AN AMBASSADOR AT COMMUNITY EVENTS
- GIVE INFORMATIVE PRESENTATIONS
- COUNSEL MEDICARE BENEFICIARIES WITH THEIR QUESTIONS REGARDING SUSPECTED MEDICARE FRAUD & ABUSE.

THIS PROJECT WAS SUPPORTED, IN PART BY GRANT  
NUMBER 90MPPG0097-01-00 FROM THE U.S.  
ADMINISTRATION FOR COMMUNITY LIVING,  
DEPARTMENT OF HEALTH AND HUMAN SERVICES,  
WASHINGTON, D.C. 20201.



## A NOTE FROM OUR PARTNER



Virtual Information Session

American  
Red Cross

# OPEN CALL FOR VOLUNTEERS

We need people who are highly dedicated and committed to helping others. Register to learn more about getting involved.



## Opportunities Include

- Blood Donor Ambassador
- Disaster Action Team (DAT)
- Volunteer Recruitment
- Red Cross Club Coordinator
- And more...

## Spring 2024 Info Session Dates

Thurs, March 7th noon- 1pm

Fri, April 26 noon - 1pm

Thurs, May 30th noon - 1pm

Wed, June 26th noon - 1pm



[www.redcross.org/volopenhouse](http://www.redcross.org/volopenhouse)



**A NOTE FROM OUR PARTNER**

# Fabric Donations

Donated fabric will be used by volunteers to make  
holiday and patriotic theme stockings for  
**Stockings for Soldiers - Delaware**

Fabric should measure at least half a yard or  
at least 18"x44".

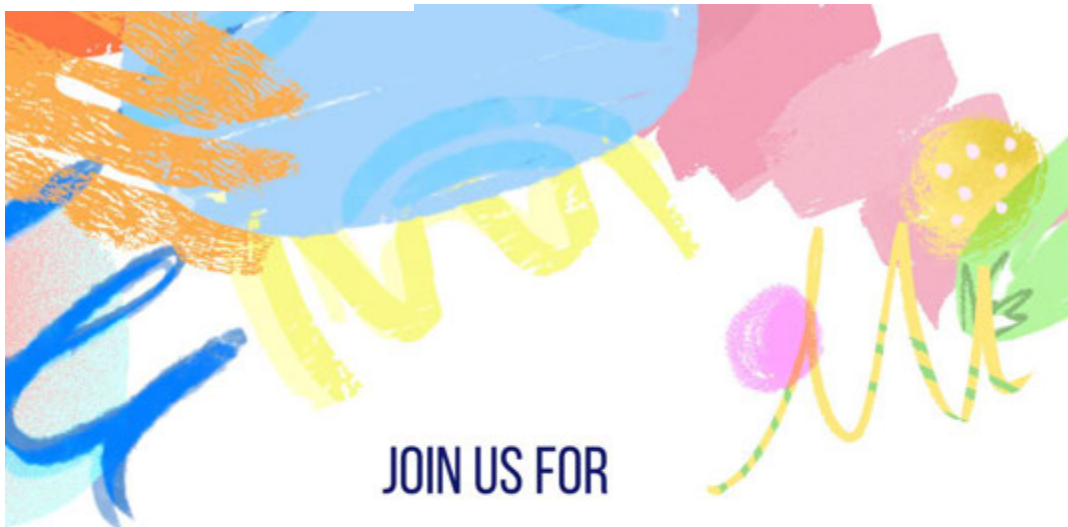


Fabric may be dropped off or mailed to:

Volunteer Delaware 50+ NCC  
1901 N. Dupont Hwy.  
Debnam Bldg.  
New Castle, DE 19720





**A NOTE FROM OUR PARTNER**

JOIN US FOR  
A FREE COMMUNITY GIVEAWAY OF NEW  
AND GENTLY USED CLOTHES, SHOES,  
TOYS, HOUSEHOLD ITEMS AND MANY  
MORE.

SATURDAY, MARCH 16TH, 11 AM - 1PM  
CORNER OF PLAYGROUND (MILLBRANCH)  
BRADY CIRCLE, MIDDLETOWN, DE 19709

302-416-2897



**For up-to-date information or weather cancellation, visit  
Forget Me Not Families on Facebook or call 302-416-2897.**



## A NOTE FROM OUR PARTNER

# Use your compassion and talents to make a difference. Volunteer with AccentCare® Hospice today.

**You can support our local patients and families by becoming a:**

## Ambassador Volunteer

- Community outreach, volunteer recruitment

## Legacy Volunteer

- Create legacies: books, journals, CDs, memory bears, crafts

## Office Volunteer

- Administrative assistance

## Social & Companionship Volunteer

- Reading, walking, caregiver relief

## Music Companionship Volunteer

- Play, sing and share music with patients, families and friends

## Children's Bereavement Camp Volunteer

- Work with camp staff and children

## Bereavement Volunteer

- Emotional support for patient family and friends

## Spiritual Presence Volunteer

- Support patient's faith related requests

## Vigil Volunteer

- Companionship during patient's last hours

## Pet Visitation Volunteer

- Patient visits with certified Pet Partners or Therapy Dogs

## Special Projects Volunteer

- Volunteer support for special groups or events like We Honor Veterans

**For more information, please contact Volunteer Delaware 50+ at 302-255-9746 or email [Guadalupe.Murphy@delaware.gov](mailto:Guadalupe.Murphy@delaware.gov)**



**accentCare.**

**[www.accentcare.com/volunteer](http://www.accentcare.com/volunteer)**

AccentCare welcomes all persons in need of its services and does not discriminate on the basis of age, disability, race, color, national origin, ancestry, religion, gender, gender identity and/or gender expression, sexual orientation, or source of payment.

© 2023 AccentCare, Inc. All rights reserved.







## A NOTE FROM OUR PARTNER

# A HUGE

# THANK

# YOU

To Blood Donors and Volunteers  
in Delaware for the many lives  
saved by daily donations.

### OPEN VOLUNTEER OPPORTUNITIES

Community Outreach Ambassador (age 18+)

Attend community events with information to share the needs and mission of BBD! Educate, answer questions, and recruit donors and volunteers.



NEW location opening later spring/early summer – MIDDLETOWN (apply now to get trained) -

- Donor Refreshment/Café at Center and/or Mobile locations (age 18+) - Help our donors feel cared for and appreciated post donation by chatting with donors and serving snacks and drinks as well as restocking canteen supplies and sanitizing tables.
- Donor Care and Staff Support (age 18+) - Make the donation process better for both donors and staff! In this role you restock donation related supplies and interact and tend to donors so they feel seen and supported.
- Mobile Blood Processor (age 18+) - Do you enjoy details, putting things in proper order, and tracking what is where? This role allows our donation staff to focus on donors during mobile blood drives. We are looking for someone who is comfortable handling the tubes and bags of blood and putting it coolers of ice for transport.
- Photo and/or Video (age 15+) - Love to be behind the lens? Enjoy taking photos or shooting and or editing video? Let us know what you love to do in this area.

**For more information, call 302-255-9746 or email [Guadalupe.Murphy@delaware.gov](mailto:Guadalupe.Murphy@delaware.gov)**



**A NOTE FROM OUR PARTNER**

**Learn about PAWS pet therapy and how you can get involved on one of our free Zoom Sessions!**



**Can my pet be a PAWS pet-therapy companion?**

Would you describe your pet as:

Sweet • People-Focused • Friendly Affectionate • Gentle • Comforting

**Can I share my pet with others?**

Do you have a few hours each month to volunteer?

Would you like to work with children, elders, and adults with disabilities?

Do you really want to give something back?

**Yes, you can! (And your pet can, too!)**

**Learn More & Register:**

**<https://www.pawsforpeople.org/YesYouCan>**



**2024 Winter Sessions**

**Thursday, March 7, 6:00 PM**

For more information on ANY of the following opportunities, please contact Volunteer Delaware 50+ at 302-255-9746 or email [Guadalupe.Murphy@delaware.gov](mailto:Guadalupe.Murphy@delaware.gov)



## A NOTE FROM OUR PARTNER



The CareWear Project consists of dedicated volunteers of all ages who create beautiful handmade winter items such as hats, scarves, mittens, quilts and blankets which are then distributed to children, families and individuals via our local partnerships.

**Please consider donating new or usable yarn to help our volunteers create more warm winter items for those in need!!!**

N. Wilmington  
B'nai B'rith House  
8000 Society Dr,  
Claymont, DE 19703

Volunteer Delaware 50+  
1901 N. Dupont Hwy.  
Debnam Bldg.  
New Castle, DE 19720

Newark Senior Center  
Sit N Stitch  
200 Whitechapel Dr.  
Newark, DE 19713

**To coordinate a donation, please call 302-255-9746 or  
email [Guadalupe.Murphy@delaware.gov](mailto:Guadalupe.Murphy@delaware.gov)**



## A NOTE FROM OUR PARTNER

# VOLUNTEERS NEEDED!



## OPENINGS:

**TUESDAY: ASSIST WITH FOOD BANK DELIVERY AND STOCKING.**

**THURSDAY: HELP WITH FARMER DELIVERIES AND BREAKING DOWN PRODUCE FOR THE PANTRY.**

**FRIDAY: PANTRY HELP. TWO SHIFTS AVAILABLE: 10:15 AM – 12:45 PM AND 12:30 PM – 3:15 PM.**



For more information, please contact Volunteer Delaware 50+ at 302-255-9746 or email [Guadalupe.Murphy@delaware.gov](mailto:Guadalupe.Murphy@delaware.gov)



### VISIT US

2809 Baynard Blvd  
Wilmington, DE 19802



## Use your drive for good.

Change lives one ride at a time.

What's often standing between people with cancer and lifesaving treatment is a ride to get there. And we need you now more than ever.

The American Cancer Society provides free rides to treatment for people with cancer. As a trained volunteer driver, you can change someone's life in as little as one hour a week by ensuring a ride is available, so care isn't stopped or delayed.



## DONATIONS Collection Bin Locations

*Together We Are Making A Difference In Delaware!*



**Main Facility**  
132 Sandy Drive, Newark

**Wilmington**  
Church of God  
2410 Newport Gap Pike

**Middletown**  
Neighborhood House  
219 W Green St.

**Newark**  
John R. Downes Elementary  
220 Casho Mill Rd.

**Hockessin**  
Hockessin Montessori  
1000 Old Lancaster Pike

**Bear**  
Academy for Creative  
Enrichment  
1458 Bear Corbitt Rd

Reybold Group  
116 E Scotland Dr.



[ForgetMeNotFamilies.com](http://ForgetMeNotFamilies.com)





## A NOTE FROM OUR PARTNER



# A Patient & Family Focused Health Literacy Program

The ABCs of Kidney Disease is a FREE 4-part series on how to manage your Chronic Kidney Disease. A kidney-friendly lunch will be provided.

**Who** is this series for?

Persons with kidney disease and their families.

**Where** will the series be held?

ChristianaCare Hospital Main Campus  
4755 Ogletown Stanton Road  
Newark, DE 19718

**When** will the series be held?

Sundays March 3, 10, 17, 24  
12 p.m. to 2 p.m.

## REGISTER NOW



[bit.ly/ABCKd2024](https://bit.ly/ABCKd2024)



### Session 1

Understanding Your Diagnosis,  
Navigating the Patient Portal



### Session 3

Managing Medication



### Session 2

Making Sense of Your Diet,  
Nutrition, and Labels, Oh My!



### Session 4

Putting Yourself in the  
Center of Your Care Team

## QUESTIONS?

Contact Leslie McGowan

[operations@literacydelaware.org](mailto:operations@literacydelaware.org)

302-658-5624

This material was prepared by Quality Insights Renal Network 4, an End Stage Renal Disease (ESRD) Network under contract with the Centers for Medicare & Medicaid Services (CMS), an agency of the U.S. Department of Health and Human Services (HHS). Views expressed in this material do not necessarily reflect the official views or policy of CMS or HHS, and any reference to a specific product or entity herein does not constitute endorsement of that product or entity by CMS or HHS. Publication No. ESRD4-012224-KS



Quality  
Insights

Renal Network 4



**A NOTE FROM OUR PARTNER**

**Help us  
turn  
plastic  
bags  
into  
PLastic  
yARN  
(PLARN)**

**2024  
10-noon PLARN PARTY**

**BENEFITS BAGS2MATS FOR THE HOMELESS,  
A VOLUNTEER DELAWARE 50+ INITIATIVE**

**Newark Senior Center**

**200 Whitechapel Dr, Newark, 19713**

**2nd & 4th Wednesday of each month**



Volunteers collect, loop and crochet plastic material into mats in order to create a barrier between the wet, dirty or cold ground. One mat = 500-600 bags

For more information, email  
[Guadalupe.Murphy@delaware.gov](mailto:Guadalupe.Murphy@delaware.gov).

 **@Bags2MatsDE**



## A NOTE FROM OUR PARTNER

# BECOME A VOLUNTEER ADULT LITERACY TUTOR!

**New Tutor Orientation - Online**

Thursday March 7

1:30 - 3:00 pm OR 6:30 - 8:00 pm

**New Tutor Training - Online**

Thursdays March 14, 21, 28, April 4

1:30 - 3:00 pm OR 6:30 - 8:00 pm

No experience required; training  
and support provided

One to one or small groups

Teaching can be online or in person

**Apply  
NOW!**



For more information,  
call 302-255-9746 or email  
[Guadalupe.Murphy@delaware.gov](mailto:Guadalupe.Murphy@delaware.gov)



## ONGOING OPPORTUNITIES



## Warming Our Communities With Threads of Love



The CareWear Project is an initiative of Volunteer Delaware 50+, a statewide program that engages persons 50 and older in volunteer service, to meet critical community needs.



To learn more or donate, visit : [DEgives.org/orgs/the-CareWear-Project](https://DEgives.org/orgs/the-CareWear-Project)

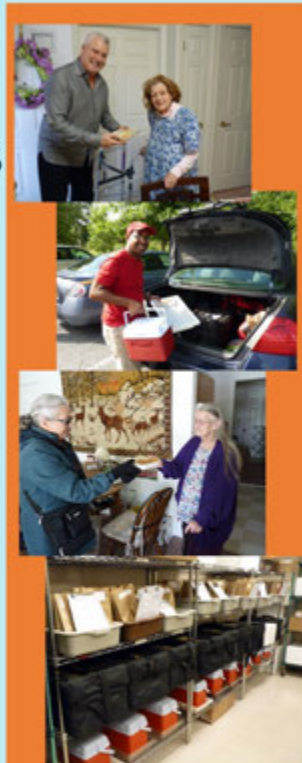


## Volunteers Needed

Deliver meals to  
home bound seniors  
citizens weekdays  
Monday – Friday

Meals on Wheels  
volunteers deliver over  
100 nutritious meals  
each weekday to  
homebound residents in  
the Newark area.

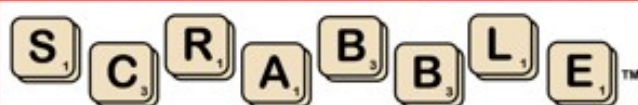
For more information  
call 302-255-9746 or email  
[Guadalupe.Murphy@delaware.gov](mailto:Guadalupe.Murphy@delaware.gov)



## Literacy Delaware's Team SCRABBLE™ Fundraising Event!

[www.literacydelaware.org](http://www.literacydelaware.org)

Get your  
tickets  
NOW!



*Along the Brandywine*

- \$50 per person; teams of up to 6 players
- Heavy hors d'oeuvres, beer and wine
- Teams work collaboratively to build the highest scoring board for three rounds of play
- Raffle baskets available; bring cash or checks
- Proceeds support our adult literacy learners

**FRIDAY**  
**APRIL 19, 2024**  
**5:30 - 7:30 PM**  
**CHRIST CHURCH**  
**CHRISTIANA HUNDRED**  
**505 BUCK ROAD**  
**WILMINGTON DE 19807**





Do you want to volunteer your time with children experiencing **foster care**?  
Do you want to help them have a voice?

CHANGE A  
CHILD'S STORY....  
BECOME A  
CASA VOLUNTEER



Then consider becoming a **CASA (Court Appointed Special Advocate) Volunteer**.

CASA Volunteers advocate for youth who are experiencing foster care to ensure that they enter a safe and permanent living situation. We have lots more information to share so if you can spare roughly 10-hours a month to help a youth, we'd love to have you.

Let's learn a bit more together....

For more information please contact Volunteer Delaware 50+ at 302-255-9746 or email [Guadalupe.Murphy@delaware.gov](mailto:Guadalupe.Murphy@delaware.gov)

## ONGOING OPPORTUNITIES



### Ballard's Reading Buddies School Sites:

To be a one-on-one reading buddy to foster students love of reading.

#### BALLARD'S READING BUDDIES SCHOOL SITES:

- Southern Elementary School-Colonial School District
- Keene Elementary School-Christina School District
- Harlan Elementary School-Brandywine School District

#### YOU ARE NEEDED:

- Volunteers needed to read to and with children one day a week
- 30min time frame per student
- Beginning October 2023



#### Times By School Location:

- Keene Elementary School 9am-9:30am or 2:45pm-3:15pm
- Southern Elementary School 9am-10:30am
- Harlan Elementary School 9:30am-10:30am

Ballard's Reading Buddies is named in the memory of Corporal Stephen J. Ballard, a Delaware State Trooper, killed in the line of duty on April 26, 2017.

Ballard's Reading Buddies is a component of UWDE Reading Angels which is a part of a larger Campaign for Grade Level Reading strategy this is also intended to impact school readiness, chronic absenteeism and summer learning loss. Additional UWDE programmatic tools include home libraries for students (through UWDE's My Very Own Library Program), student library cards, social emotional learning and unique family engagement opportunities.

Looking for a way to make a difference with just a few hours a month?

The Wilmington Senior Center is calling on volunteers to lend a hand in their Food Pantry!

They have various Wednesday shifts.

Volunteer duties include:

Collect Seniors' orders

Pack the items in bags

Label and hand out filled orders.

Help brighten someone's day

**Wilmington Senior Center**

Food Pantry volunteers needed

Only a few hours of your time  
Wednesday shifts open through 2/14/2024

Collect Senior's orders  
Pack the items in bags & label  
Hand out filled bags to seniors

Sign up at [volunteer.delaware.gov](http://volunteer.delaware.gov) & search "Food Pantry Volunteers"

For more information on ANY of the following opportunities, please contact Volunteer Delaware 50+ at 302-255-9746 or email [Guadalupe.Murphy@delaware.gov](mailto:Guadalupe.Murphy@delaware.gov)



## ONGOING OPPORTUNITIES

**DELAWARE  
HOSPICE**  
Since 1982



## Attention: Seamstresses & Seamsters Your Creativity Can Bring Comfort!

Are you a skilled seamstress or seamster with a desire to make a difference? We invite you to join our Delaware Hospice Memory Bear and Heart Volunteer Team, providing comfort and support to grieving families by transforming cherished clothing items into beautiful keepsakes.

### Why Volunteer With Us?

Discover the transformative power of your sewing skills as you join our Memory Bear and Heart Volunteer Team. Your talent will play a crucial role in bringing solace and comfort to grieving families during their time of need. By transforming memories into tangible keepsakes, you'll make a meaningful impact, supported by a compassionate community of volunteers.

### What We Provide:

- All necessary supplies.
- Guidance and support from our experienced senior seamstress.
- A rewarding and meaningful volunteer experience that makes a difference in people's lives.



**READY TO USE YOUR  
SEWING SKILLS FOR A  
MEANINGFUL CAUSE?**

For more information call  
302-255-9746 or email  
Guadalupe.Murphy  
@delaware.gov

Join us in **stitching together**  
compassion and support  
within our community.



Join us at our monthly get-togethers



**3rd Friday of every Month  
10 - 11am**

**B'nai B'rith House  
8000 Society Dr.  
Claymont, DE 19703**

For more information, call  
302-255-9746 or email  
Guadalupe.Murphy@delaware.gov

## Meet diverse people and have fun while engaging in cross cultural activities in Delaware!



Promoting Peace  
through Understanding  
by fostering cross-  
cultural exchange and  
experiences.

[info@ptpde.org](mailto:info@ptpde.org)

[www.ptpde.org](http://www.ptpde.org)

Bring your computer skills and  
volunteer from home to make an  
impact in our community on one of  
our many exciting committees.

### Public Relations Committee

Create fliers and social posts,  
assist with mailing list and  
announcements

Skills: Canva and Mail Chimp

### Program Committee

Brainstorm ideas for virtual and  
in person exchange programs,  
support tech in online meetings

Skills: Zoom

### Fundraising Committee

Assist grant research & writing,  
foster philanthropic relations

Skills: Word, Excel, Google  
Docs/Sheets

### Membership Committee

Increase public awareness,  
encourage partnerships, new  
membership and volunteers

Skills: Excel/Google Sheets



## ONGOING OPPORTUNITIES

Our Mission: To keep people alive and safe, to help them through crises, and to connect them with relevant community resources.

Are you thinking about being a support person for someone you don't know? Then, look to volunteer with ContactLifeline and be a good listener for someone in need over the phone. The Crisis Helpline is located in Wilmington. Don't worry, you will be trained (in-person) to be a better listener for someone who needs you.

ContactLifeline crisis responder services are provided by professionally trained and supervised volunteers and professionals who respond anonymously and confidentially to human needs, state-wide, 24 hours a day.

**For more information, please contact Volunteer Delaware 50+ at 302-255-9746 or email [Guadalupe.Murphy@delaware.gov](mailto:Guadalupe.Murphy@delaware.gov)**



**looking to volunteer in a different capacity?  
why not join one of our family services committees ...**

### **family selection volunteer committee member (Virtual)**

**the purpose** choosing the families to own and occupy Habitat for Humanity is one of the most difficult and challenging aspects of this ministry. The Family Selection Committee is responsible for drafting the selection criteria used to select families for approval by the Board of Directors.

**For more information, please contact Volunteer Delaware 50+ at 302-255-9746 or email [Guadalupe.Murphy@delaware.gov](mailto:Guadalupe.Murphy@delaware.gov)**





## ONGOING OPPORTUNITIES

Facilities and  
Landscaping**VOLUNTEERS  
NEEDED**

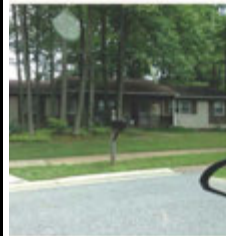
Help create and maintain  
habitats for our wild bird  
patients!

**JOIN US!****(302) 737-9543**

Scan here!

**nami**  
National Alliance on Mental Illness**Delaware**  
*Join the Movement!*

Days of Caring, Group Volunteer Work  
with NAMI Delaware's Housing Program

**ABOUT:**

Do you have a small group interested in giving an hour or two of your time to help with simple landscaping projects? NAMI Delaware's Housing Team would love to have you! There are a variety of locations and projects for volunteer teams to help with during the spring/summer and fall seasons.

**Tasks May include**

- Pruning
- Mulching
- Trimming trees and bushes
- Painting
- Decks/Porches
- Raking Leaves

**CONTACT US****NAMI Delaware**

Merton Briggs, Director of Housing, [mbriggs@namide.org](mailto:mbriggs@namide.org)  
Doug Culton, Property Manager, [dculton@namide.org](mailto:dculton@namide.org)



We are seeking volunteers to assist participants with program activities and help create a relaxing environment where participants feel at ease.

Volunteers are asked to commit to a minimum of  
1 day/week from 10am-2pm.





**ONGOING OPPORTUNITIES****What is a CASA?**

A CASA (Court Appointed Special Advocate) is a specially trained volunteer appointed by a Family Court Judge to advocate for the best interest of a child experiencing foster care.

**What do CASAs do?**

- Advocate for children experiencing foster care due to abuse and neglect.
- Establish strong, stable connections with their assigned youth.
- Advocate to ensure the child receives needed essential services.
- Attend meetings and gather information from parties involved in the child's life.
- Work with the Child Attorney and CASA Coordinator to make recommendations in court for what's best for the child.
- Remains involved in the case until the child is reunified with their family or when that is not possible, works to find a safe and permanent home.
- Meet with the child face-to-face at least once a month.
- Attend all court hearings to testify to their findings and recommendations as the child's advocate.

**Scan to learn more, or  
call us at call us at  
302-255-1730!**

**Why Become a CASA?**

Our mission is to be a voice for Delaware's abused and neglected children through skilled volunteers, community collaboration, and quality representation, instilling a need for safe and permanent relationships that will build healthy and resilient children.





## ONGOING OPPORTUNITIES

## Making Strides Volunteer Opportunities



**The Making Strides Against Breast Cancer Volunteer Committee:** The Volunteer Committee helps to lead and represent the innovative, diverse, and action-oriented community. They inspire positive change and care for those experiencing breast cancer through their leadership. Committee members will help to raise Breast Cancer awareness and work to connect to those in their network that can partner with or sponsor the Making Strides Against Breast Cancer event and movement.

- **Time Commitment:** 1 hour/month on our monthly meeting, plus an additional 2-4 hours/month spent on event-related tasks.
- **Benefits:** As a member, you get to participate in an exciting community event to raise awareness and funds to end breast cancer. You can choose to volunteer for the day-of the walk and Kickoff Party, in addition to using your skills to help plan & grow the event.
- **Main Focus Areas:** Event Experience and/or Making Connections
- **Meeting Location:** We meet virtually once a month! There are opportunities to be out in the community, such as by helping run our Kickoff Party, promoting Strides at community events, and at the walk itself.
- **Meeting Times:** one hour/month via Zoom, typically from 6:30 - 7:30 pm on a Tues, Wed, or Thurs evening.

40<sup>TH</sup> ANNIVERSARY  
DELAWARE  
HOSPICE



### Patient Care Volunteers Needed

Apply Today!

At Delaware Hospice, our team of volunteers provide companionship to patients, respite for caregivers, assist with shopping and errands, and so much more!

#### Patient Care Volunteers

- Check-in calls with patients.
- Care calls: provide a listening ear to patients.
- Visit with a patient (read, share stories, play cards or board games).
- Provide transportation to doctor appointments, store or pharmacy.
- Walk with a patient.
- Run an errand.
- Provide vigil support as a patient nears death.
- Give haircuts to patients.
- Assemble and deliver care gifts to patients.
- Pet Therapy Visits.
- Music Therapy Visits.

#### RN Volunteers

- Medication disposal after a patient has passed or is discharged.
- Assist staff with vaccination clinics.
- Assist with clinical staff education.

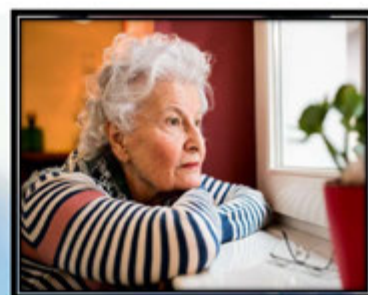
#### Vet-to-Vet Volunteers

- Veterans visit patients who are also veterans and talk about the patient's military experiences.

Interested in becoming a volunteer at Delaware Hospice? Please contact the Volunteer Department at (302) 856-7717, [volunteer@delawarehospice.org](mailto:volunteer@delawarehospice.org), or visit [www.delawarehospice.org/volunteer/](http://www.delawarehospice.org/volunteer/)

## The Never Alone Project

PROVIDING FRIENDLY SUPPORT TO OUR DELAWARE ELDERLY AND DISABLED NEIGHBORS WHO MAY BE FEELING SOCIALLY ISOLATED DUE TO COVID-19 PANDEMIC AND OTHER LIFE FACTORS.



Social isolation and loneliness have gradually become contributing factors to increased illness among elderly, disabled and chronically ill persons. This has become intensified as we have been facing the COVID-19 pandemic for 3+ years now. Through this project, Delaware Ecumenical Council on Children and Families (DECCF) will promote resilience by establishing new, and supporting existing relationships with clients, caregivers, and families.

We seek to do this through establishing weekly (or other frequent) calls as telephone reassurance that someone is there for them should they want to talk about what they are experiencing. The Never Alone Project will

perform a high-level screening for social isolation, and make voluntary referrals to behavioral health professionals should follow-ups be necessary. Also, a "Coping in Times of COVID-19" tool kit for seniors, will be provided to each participant



- Safe Companionship
- Friendly Check-ins
- Isolation/Loneliness Assessment
- Encouragement
- Inspirational Writings
- Informed Delaware COVID-19 updating
- "Coping in Times of COVID-19" toolkit for seniors

Let us help you, and/or a loved one through these challenging times.

Register today.



Kent County/Northern Sussex --  
-Deborah Kileen -- (302) 650-8864  
New Castle- Brian K. Sanders -- (302) 225-304  
- Naa Sackley Huffman -- (302) 898-4983  
Smyrna/ Clayton/ Middletown/ Odessa/ Townsend -  
- Gail LaGasse -- (302) 650-8868

2629 W. 19th Street  
Wilmington, DE 19806  
[www.deccf.org](http://www.deccf.org)





Looking to support a mission of safe and affordable housing for Delawareans, all while staying inside, out of the cold? Come out and volunteer with us at Habitat for Humanity's ReStores! Our ReStores are public donation centers that help families build, rehabilitate and repair homes in the New Castle County area. By giving your time and talents, you can help the Habitat ReStore do more to support homebuilding projects that benefit families in your community!

At the ReStores, we look to engage volunteers with a variety of opportunities, including refurbishing of donations, creating decorative displays, organizing the donation dock and sales floor, and interacting with customers. All efforts are led by a fantastic team of ReStore staff and your fellow volunteers! We offer shifts at our ReStores Tuesday-Saturday, between 10am and 5pm. Shifts are from 10-2, 12-5 or an all day shift, but we're also very flexible on when you can come in! We have 2 locations, Wilmington and Middletown.



## ONGOING OPPORTUNITIES

For more information on ANY of the following opportunities, please contact Volunteer Delaware 50+ at 302-255-9746 or email [Guadalupe.Murphy@delaware.gov](mailto:Guadalupe.Murphy@delaware.gov)

accentCare.

**Volunteer your time and compassion – and make a big difference**

**Become a Virtual Bereavement Volunteer today**

The needs of bereaved families and friends are unique – and our Virtual Bereavement Volunteers are there to support them. This special group of volunteers offer much-needed support to these lower-risk loved ones by making phone calls, often on the anniversaries of deaths, providing important moments of "virtual" connection.

As a Virtual Bereavement Volunteer, you may also co-facilitate virtual services of remembrance and take part in virtual grief support groups – all from the comfort of your home. All our volunteers are trained to assess the needs, responses, and support systems of the bereaved, and provide documentation to help our psychosocial team determine any needed follow up care.

**Volunteer with NAMI Delaware**

**HELPLINE VOLUNTEERS & SUPPORT GROUP FACILITATORS NEEDED**

NAMI Delaware

**NO PREVIOUS EXPERIENCE NECESSARY**

Support Group facilitators must have lived experience as peers or family members.

For more information please visit:

[www.namidelaware.org/join](http://www.namidelaware.org/join)

### REQUIREMENTS

- Must be passionate about supporting those living with mental illness and their families
- Able to listen to potentially difficult stories with empathy and compassion



## ONGOING OPPORTUNITIES

Partner reports  
hours



## OPEN VOLUNTEER ROLES!!!

**Donor Care and Staff Support (age 18+):**

Want to be on the donation floor? Interact with donors and staff? Make the donation process better for both donor and staff? In this role you restock supplies staff need for donation process, hand out items donors need, and interact with donors so they feel seen and have someone there supporting them. Schedule sign up first come first serve after completion of application and training.

**Community Outreach Ambassador (age 18+):**

Enjoy people? Want to interact and share what BBD does with people in the community? You'll attend community events with information and training provided to share the needs and mission of BBD! Fun way to be with people and help BBD in saving lives. Training online and in person. Scheduled in advance variable upon community event dates.

**Donor Refreshment/Canteen Center and/or Mobile (age 18+):**

Enjoy people and staying active? Care for donors post-donation, chat with donors, serve snacks and drinks, and help donor feel cared for and appreciated. Active role, interact with people, restock, and sanitize tables. Training online and in person. Center schedules set and sign up with lead volunteer guidance, mobile drive schedules posted a month in advance first come first serve.

**Greeter (age 15+):**

Say hello to donors on way in, and thank on their way out of the blood center. Sanitize tablets, laminated reading material, and chairs, counter, etc. in registration area. Interact with donors, staff, and

volunteers. Schedule sign up first come first serve after completion of application and training.

**Fundraising (age 18+):**

Have experience in fundraising, enjoy data input, thank you letter preparation, or anything related to raising funds? We look forward to hearing what skills and experience you have to share!

**Office Admin, Phone, and Related tasks (age 15+):**

Are you an indoor office organizing type person? BBD has different types of roles: data entry, phone calls, letter mailing preparation, copying, scanning, shredding, and variety of other office computer related tasks. Let us know your skill set and experience!

**Photo and/or Video (age 15+):**

Love to be behind the lens? Enjoy taking photos or shooting video? Maybe editing video? Creating short videos? Let us know what you love to do in this area.

**For more information, please  
contact Volunteer Delaware 50+  
at 302-255-9746 or email  
[Guadalupe.Murphy@delaware.gov](mailto:Guadalupe.Murphy@delaware.gov)**





## ONGOING OPPORTUNITIES

**Spiritual Care Support Volunteer**

The Delaware Hospice @ Saint Francis Unit is looking for volunteer chaplains to join our team. For more information about our program, please contact Volunteer Coordinator, Rolonda Sutton-Greene at (302) 478-5707 or visit our website <https://www.delawarehospice.org/volunteer/>

**Our volunteer chaplains provide:**

- Spiritual support for patients and families
- An opportunity to pray and read with patients
- A calming presence and a safe space to talk

**Delaware Hospice @ St. Francis Unit Volunteers**

Delaware Hospice is looking for volunteers to join our team! Our volunteers offer a wide range of talents to support our patients, families and staff. If you would like to share your talents, please contact our Volunteer Department at (302) 478-5707 or visit our website <https://www.delawarehospice.org/volunteer/>

**Unit Support Volunteers may assist with:**

- Front Desk Coverage from 4p-8p
- Cookie Baking
- Music Therapy
- Pet Therapy (pet must be certified and have records)
- Patient Support

**For more information, please contact Volunteer Delaware 50+ at 302-255-9746 or email [Guadalupe.Murphy@delaware.gov](mailto:Guadalupe.Murphy@delaware.gov)**



## CHARITY CROSSING'S

Giveaway Items:  
Household items,  
Pet Items, Packaged Foods,  
Toys, Clothing, etc



Helping Our Community and Environment  
Recycle | Reuse | Reclaim | Restore | Repurpose



## UPCOMING GIVEAWAY

Please **DO NOT SELL** Donated Items.  
Respect our Volunteers.  
Follow Guest Guidelines.  
Violators will not be allowed.

For an updated listing of  
giveaway dates and  
locations, visit:  
[charitycrossing.org/cc-giveaway](https://charitycrossing.org/cc-giveaway)



## RESOURCES

**FRIDAY**

# 4TH FRIDAYS

"connecting people from place to place"

1-888-323-HOPP (4677)  
WWW.THEHOPP.ORG

### FOOD GIVEAWAY SITES

**ASBURY AFRESH UMC // 10 AM - 300 E. BASIN RD. NEW CASTLE— WILMINGTON MANOR LION CLUB // 10:30AM - WESTERN SENIOR CENTER, 1 BASSETT AVE, NEW CASTLE— PENIEL UMC // 11 AM - 115 E MARKET ST, NEWPORT— RICHARDSON PARK UMC // 11 AM - 11 N MARYLAND AVE. WILM— TREE OF LIFE 11:30 AM - 10 PIKE PLACE, NEWARK BOYS AND GIRLS CLUB EZION MT CARMEL // 12 PM - 800 N. WALNUT ST, WILM— BETHESDA UMC // 12:30 PM - 2313 CONCORD PIKE, WILM— DALE UMC // 12 PM - 143 E. LAKE ST. MIDDLETOWN— KINGWOOD UMC // 12 PM - 300 MARROWS RD, NEWARK**

For an updated list of locations,  
visit The Hopp -Harvest Outreach  
People Project on Facebook or  
call 1-888-323-4677

**DELAWARE REGIONAL  
DREAM  
CENTER**  
310 Ruthar Dr.  
Units 9-10-11  
Newark, De.  
302-286-7406  
DreamCenterDe.org

Weekly drive-  
thru food  
distribution,  
every Friday  
10am-1pm.

Dream Center  
310 Ruthar Dr.  
Newark 19711  
302-286-7406.

## REPORT HARM OF VULNERABLE ADULTS

NEGLECT • ABUSE • EXPLOITATION

**888-APS-4302**



Delaware Adult Protective Services

# MAKE THE CALL

"In 2021, anonymous reports helped protect 2,184 vulnerable adults from potential abuse; new hotline makes reporting neglect, abuse and exploitation easy and confidential."

With one simple phone call,  
concerned individuals and those

experiencing harm can connect with free, voluntary services and resources that could save a life. For more information about Adult Protective Services, including how to file a report, types of harm, and the resources and services available, visit [dhss.delaware.gov/dsaapd/aps](https://dhss.delaware.gov/dsaapd/aps).



## RESOURCES

**DIAL 2-1-1** to get connected to local resources.



Bill Payment  
Assistance



Disaster  
Services



Education



Employment  
& Financial  
Support



Food



Health Care

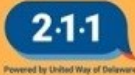


Personal &  
Household  
Items



Transportation

211 is here to help.



Powered by United Way of Delaware



DIAL  
2-1-1



TEXT  
your zip code  
to 898-211



LEARN MORE  
[delaware211.org](http://delaware211.org)



Smart911®



RESIDENTS AND FAMILIES

**Protect What  
Matters Most**

Be prepared for any emergency by giving  
public safety the information they need to  
better help and communicate with you.

Smart911 is a free national service brought to you by the  
New Castle County Department of Public Safety



**Delaware  
Aging & Disability  
Resource Center**

The Delaware ADRC is your one-stop access point for  
information, assistance, and referral to resources that  
support older Delawareans, adults with disabilities, and  
caregivers.

#### CONTACT DELAWARE ADRC

Phone: 1-800-223-9074 (toll-free)

Email: [DelawareADRC@delaware.gov](mailto:DelawareADRC@delaware.gov)



**SMP**

Senior Medicare Patrol

Preventing Medicare Fraud

**Protect Yourself and  
loved ones from  
Medicare fraud.**

Senior Medicare

Patrols (SMPs) empower and assist  
Medicare beneficiaries, their families, and  
caregivers to prevent, detect, and report  
health care fraud, errors, and abuse.

**Delaware Senior Medicare Patrol**

**1-800-223-9074**

**[barbara.jackson@delaware.gov](mailto:barbara.jackson@delaware.gov)**



**Senior Roll Call Lifeline** is a  
free program provided by New  
Castle County, Division of  
Police, that makes daily calls  
to the homes of our elderly or  
disabled members to ensure  
they are doing well and do not  
require emergency assistance. If after several  
attempts the calls are unsuccessful,  
emergency help is sent to the home to check  
on the well-being of the member.  
For more information call 302-255-9878.