

VOLUNTEER DELAWARE 50+

New Castle County Edition



Volunteer Delaware 50+ is a statewide program offered through the State Office of Volunteerism within the Division of Social Services. The mission is to engage persons 50 and older in volunteer service, to meet critical community needs and to provide a high quality experience that will enrich the lives of Volunteers.
ENROLL TODAY!

VOLUNTEER OPPORTUNITIES & COMMUNITY RESOURCES

Volunteer.Delaware.gov/Volunteer-Delaware50

BLACK HISTORY MONTH VOLUNTEER EVENT



Volunteer Delaware 50+ & January Birthdays
Pages 1 – 4

Spotlight: Governor-Elect Matt Meyer's Inaugural Weekend of Service
Page 5

News From Our Partners, Volunteer Opportunities & Community Resources
Pages 6 – 30

BLACK HISTORY CELEBRATION MEET DELAWARE TRAILBLAZERS

SAT., FEBRUARY 1, 11A-2P WALNUT STREET YMCA, WILMINGTON

FREE EVENT! LEARN ABOUT DELAWARE TRAILBLAZERS PERFORMANCES | KIDS ACTIVITIES | SHOP LOCAL BLACK-OWNED BUSINESSES



WALNUT STREET YMCA
1000 N WALNUT ST
WILMINGTON

FOR FULL DETAILS:
NEWCASTLEDE.GOV/BHM



New Castle County Community Partners

A Matter of Balance 302-255-9101	DE Ecumenical Council on Children and Families - 302-225-1040	Newark Senior Center 302-737-2336
Alzheimer's Association 215-561-2919	Delaware Hospice 302-478-5707	Meeting of the Minds
Amanecer Counseling & Resource Cnt 302-576-4136	Delaware Museum of Nature and Science 302-658-9111X 324	Newark Meals on Wheels
American Cancer Society 1-800-227-2345	DE Senior Medicare Patrol 302-255-9510	Senior Surfers
American Red Cross of Delmarva 302-656-6620	Delaware Theatre Company 302-594-1100	Osher Lifelong Learning Institute (OLLI) 302-573-4417
Blood Bank of Delmarva 302-737-8405	Easterseals Delaware 302-324-4444	PAWS for People 302-351-5622
Brandywine Valley SPCA 302-858-4202	Family Promise of Northern NCC 302-998-2222	People to People: Delaware Chapter info@ptpde.org
CareWear Project Knitters and Crocheters Bags2Mats for the Homeless 302-255-9746	Food Bank of Delaware 302-292-1305 ext 254	Phoenix Family Resources 302-593-7532
Patches of Love	Forget Me Not Families 302-416-2897	Read Aloud Delaware 302-656-5256
CASA (Office of Child Advocate) Count Appnt. Spec. Advo. 302-255-1730	Grand Opera House 302-658-7897	Shoes That Fit: Delaware Chapter 302-234-9319
Channie P. Bradley Senior Services 215-520-7525	Habitat for Humanity of NCC Construction Site: 302-652-0365 ReStore Wilmington: 302-652-5181 ReStore Middletown: 302-449-1414	Special Olympics Delaware 302-831-4653
Child, Inc. 302-762-8989	Hagley Museum & Library 302-658-2400 X257	St. Anthony's Community Center 302-421-3721
Children & Families First 302-777-9757	Literacy Delaware 302-658-5624	City Fare Meals on Wheels 302-421-3734
Children Empowered by Love, Inc. childrenempoweredbylove@comcast.net	Lutheran Community Services 302-654-8886	St. Anthony's Senior Center 302-421-3735
ChristianaCare 302-733-1284	MOT Jean Birch Senior Center 302-378-4758	Stockings for Soldiers Delaware Inc. info@StockingsForSoldiers.org
Wilmington Hospital 302-428-2206	NAMI DE (National Alliance on Mental Illness) - 302-427-0787	Supporting Kidds Inc. 302-235-5544
ChristianaCare in Collaboration with AccentCare (formerly known as Seasons Hospice) 302-533-3800	New Castle County Dept. of Community Services 302-395-5640	Thomas Edison Charter School 302-778-1101
Connecting Generations 302-656-2122 x0013	New Castle County Libraries 302-395-5617	Tri-State Bird Rescue & Research Inc. 302-737-9543 x102
ContactLifeline 302-761-9800 ex. 1002	NCC Senior Roll Call Lifeline (302) 395-8159	United Way of Delaware 302-573-3705
Delaware Center for Horticulture 302-658-6262 ext. 108	Nemours Children Hospital 302-651-6096	Volunteer Delaware 302-381-3594
		Volunteer Delaware 50+ NCC Advisory Council 302-255-9746
		Wilmington Senior Center 302-651-3400
		Winterthur Museum, Garden & Lib. 1-800-448-3883
		VITAS Healthcare 302-451-4000



Volunteer Delaware 50+ focuses on helping individuals 50 years of age and older, use the skills and talents learned over the years, or develop new ones while serving in a variety of volunteer activities within the community. Volunteer Delaware 50+ volunteers determine their preferred level of commitment. Come join the more than 2,500 Volunteer Delaware 50+ members and start making a difference today!

What are the benefits of becoming a Volunteer Delaware 50+ member?

- All members receive supplemental insurance protection in case anything happens **while** they are volunteering with one of our community partners (excess volunteer liability insurance & excess automobile liability insurance)
- Opportunity for outstanding volunteers to attend a free recognition luncheon and enter to win door prizes (must meet required hours)
- Opportunity to receive a monthly listing of one-time volunteer projects, upcoming events and ongoing volunteer opportunities (sent via email)
- Invitation to attend free educational workshops on topics pertaining to the 50+ community (sent via email)
- Tracking of hours and years of service

Why do you collect my volunteer hours?

- Helps us to qualify for grants and places us in a better position to advocate for continued funding, not only for our program but also for our community partners
- Helps us to quantify all the amazing volunteer work Delawareans are doing for our state/in our communities
- Helps us to identify and recognize our outstanding volunteers through our annual Volunteer Recognition Luncheon



Are you already a volunteer with one of our community partners and would like to also be a member of Volunteer Delaware 50+?

We are always looking-for and inviting non-profit organizations to join us and become a community partner in order to offer even more opportunities to our members. If you are already a volunteer with one or more of our community partner and would like to also become a member of Volunteer Delaware 50+ please contact your local office.

New Castle County: please call 302-255-9101 or email Guadalupe.Murphy@delaware.gov or Arundhati.Ghosh@delaware.gov.

For more information please visit Volunteer.Delaware.gov/Volunteer-Delaware50





Robert Barfield

Denny Barrowclough

Kathleen Bear

Cathy Cardamone

Patricia Caulder

Kay J Cawman

Ray Conner

Barbara Demark

Barbara Dixon

Phoebe F. Doherty

Phyllis Edwards

Virginia Ferguson

Ann Gaul

Susan Good

Carolyn Grant

James Grimes

Gail Griskowitz

Nadine Johnson

Donna L. Lloyd

Connie Mangano

Laurie Moore

Lois Nagelberg

Alfred Padeletti

Sonya Pathania

Norma Jean Payne

Diane Rausch

Eugene Reiss

Guadalupe Reynolds

Alice Rizzo

Mary Shapero

JoAnn Simmens

Gladys Spikes

Audrey Taylor

Hazel Tolbert

Patty Walsh

William Walsh

Nancy Weishew

Catherine Welde

Linda A. Williams

Alicja Zyzniewska

PAWS for People

HEALING PET THERAPY SINCE 2005

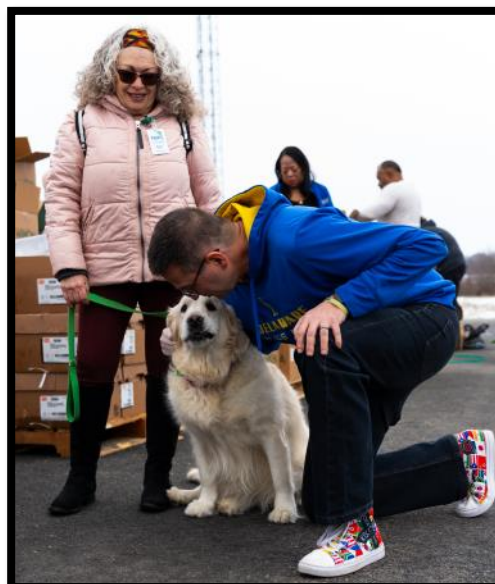
Thank you PAWS for People Volunteers!

Thank you for joining
the State Office of Volunteerism,
AmeriCorps, Volunteer Delaware &
Volunteer Delaware 50+, for Governor-
Elect Matt Meyer's Inaugural weekend of
service events in Delaware, celebrating
the honorable Dr. Martin Luther King, Jr.

Sussex County: Food distribution event
to benefit over 200+ families & donation
drive to benefit even more families for
months to come.

Kent County: School beautification
projects at Towne Point Elementary
School.

New Castle County: 13th Annual MLK
Day of Service to include a peach march,
service projects and community
celebration!



ATTENTION VOLUNTEERS

Have you started volunteering with a new organization or had any changes to your contact info?

We're refreshing our system and want to make sure we have all your details, so we can capture all the precious volunteer hours you're giving back to the community!

📞 Call us at **302-255-9878** and update your info today!

Thanks for making a difference!

You're the heart of our community!



 VOLUNTEER
DELAWARE 50+





The Wilmington Senior Center (WSC) was officially established on July 6, 1956 as the first senior center in Delaware. WSC has a long history of serving the City of Wilmington, offering activities and services to the 50+ community. The vision of our founders was filled as hundreds of active seniors were attracted to the center for trips, teas, classes, counseling and card parties.



www.WilmingtonSeniorCenter.org

Today the WSC is thriving, offering even more activities and classes. Our **Grandparent and Caregiver Resource Center** provides one-to-one assistance, referrals and advocacy . The WSC has been able to remain a thriving part of the City of Wilmington due to the generous support of members, and the local community. Thank you to the community, businesses, corporations, foundations and others who have been an integral part of making the Wilmington Senior Center a vital community resource!

Help us turn plastic bags into PLastic yARN (PLARN)

Bags2Mats for the Homeless

Wilmington Senior Center **March 20, 2025**
10:00 AM - 11:30 AM
1901 N Market St.

Benefitting the Bags2Mats for the Homeless, a VOLUNTEER DELAWARE 50+ initiative.

Volunteers collect, cut, loop then crochet or weave the plastic material into a mat. Mats create a barrier between the wet, dirty, and cold ground, as well as help retain body heat. One mat = 600 bags

For more information, email Guadalupe.Murphy@delaware.gov.

[f @Bags2MatsDE](https://www.facebook.com/Bags2MatsDE)

NOW OPEN ON FRIDAYS

Monday - Friday: 8:00AM - 2:00PM
 Saturday - Sunday: **CLOSED**

Wilmington Senior Center

Volunteers are needed to help the Wilmington Senior Center with a variety of exciting activities which will engage our members and increase our ability to serve the greater Wilmington community.

Positions range from office assistance to community events, on-going leadership opportunities to one-time activities, fundraising to program-related positions, and from highly skilled tasks to tasks requiring little education or training.

Volunteer with us on Saturday, March 29, 2025, for the Inaugural Wilmington Senior Center Brandy & Wine on the Brandywine 5K Run!

A NOTE FROM OUR PARTNER

BRANDY & WINE ON THE BRANDYWINE

Wilmington Senior Center 5K

March 29, 2025
Saturday

5K starts at 9:00AM
from the Senior Center

1901 N. Market St.
Wilmington, DE. 19802

SCAN
FOR REGISTRATION & INFO

Brandy & Wine on the Brandywine 5K Run!

Registration is open for anyone interested in **volunteering** their time for our upcoming WSC Brandy & Wine on the Brandywine 5K Run!

To learn how you can get involved and volunteer, please contact Volunteer Delaware 50+ at 302-255-9746 or email Guadalupe.Murphy@delaware.gov

A NOTE FROM OUR PARTNER**DO YOU HAVE CONCERNS
ABOUT FALLING****A MATTER OF
BALANCE**

MANAGING CONCERNS ABOUT FALLS

**CONCERNED ABOUT FALLS? A MATTER OF BALANCE HELPS MANAGE FALLS
AND BOOSTS ACTIVITY LEVELS FOR OLDER ADULTS.****FREE SPRING CLASSES ONCE A WEEK FOR 8 WEEKS STARTING:****NEWARK SENIOR CENTER
NEWARK
(302) 737-2336
MARCH 11TH - MAY 6TH
TUESDAYS, 10:00 AM TO 12:00 PM
NO CLASS ON 4/22****APPOQUINIMINK LIBRARY
MIDDLETOWN
(302) 378-5588
MARCH 11TH - APRIL 29TH
TUESDAYS, 2:00 PM TO 4:00 PM****HOWARD WESTON SENIOR CENTER
NEW CASTLE
(302) 328-6626
MARCH 11TH - MAY 6TH
THURSDAYS, 9:30 AM TO 11:30 AM****WOODLAWN LIBRARY
WILMINGTON
(302) 571-7425
MARCH 18TH - MAY 6TH
TUESDAYS, 10:30 AM TO 12:30 PM****BRANDYWINE HUNDRED LIBRARY
WILMINGTON
(302) 477-3150
MARCH 24TH - MAY 12TH
MONDAYS, 1:00 PM TO 3:00 PM****BEAR LIBRARY
BEAR
(302) 838-3300
MARCH 26TH - MAY 14TH
WEDNESDAYS, 10:30 AM TO 12:30 PM****NEW CASTLE SENIOR CENTER
NEW CASTLE
(302) 326-4209
APRIL 22ND - JUNE 10TH
TUESDAYS, 10:00 AM TO 12:00 PM****For more information
Arundhati Ghosh
302-255-9101
arundhati.ghosh@delaware.gov**

A NOTE FROM OUR PARTNER



A MATTER OF
BALANCE

MANAGING CONCERNS ABOUT FALLS

A MATTER OF BALANCE IN-SERVICE DAY



Our In-Service on January 23rd for A Matter of Balance was a fantastic opportunity for coaches to connect, learn, and network.

The event included a roundtable discussion, an informative presentation, and time to share insights with fellow coaches.

It was a valuable day of collaboration and growth, and we're excited for future opportunities to continue learning together!

A NOTE FROM OUR PARTNER

Save The Date!

Sunday, February
16th 2025 at 2 pm

Newark Senior Center

The Meals on Wheels Program has always been a cornerstone of the Newark Senior Center. Delivering hot, freshly prepared meals to homebound seniors has always been a priority. We have been delivering an average of 230 meals per day including bagged suppers since March 2020 and it has truly been a community effort. The success of the MOW program hinges on many factors including; the dedication of the NSC staff, the large pool of volunteers, and the financial support from our community.

Empty Bowls is the only fundraiser to solely support the NSC Meals on Wheels program.

Please go to the Newark senior center's website to register for tickets to this event, support a good cause!



Empty Bowls

A stronger community through giving

A NOTE FROM OUR PARTNER

THE AMERICAN RED CROSS

OUR MISSION

The American Red Cross aims to prevent and alleviate human suffering. Our services range from disaster relief such as single family fires or multi-state disasters to supporting local blood drives and U.S. military, veterans, and their families.

IMPACT

Every day—including holidays — a dedicated team of American Red Cross volunteers spring into action to deliver comfort and hope to families devastated by disasters. Over 2023, local volunteers have responded to **1,225 emergencies** in the National Capital & Greater Chesapeake region as part of more than **60,000 disasters** that the Red Cross responds to each year across the country.

Every day, roughly **36,000 units** of red blood cells are needed in the US. Through generous donations, The Red Cross provides approximately **40%** of the nation's blood supply.



AT A GLANCE

REGISTER

- <https://redcross.org/volopenhouse>
- QR Code Below

ATTEND

- Friday, February 21st, 2025
- 12:00-1:00pm

SERVE

- Complete the application
- Train for positions
- Sign up for shifts



For more information, please contact Volunteer Delaware 50+ at 302-255-9101 or email Arundhati.Ghosh@delaware.gov.



JOIN US

A NOTE FROM OUR PARTNER



THE SUPER BOWL STAGE IS SET AS THE PHILADELPHIA EAGLES TAKE ON THE KANSAS CITY CHIEFS ON SUNDAY, FEBRUARY 9!

We need your help replenishing our shelves. From now through Super Bowl Sunday, you can make the assist by helping us collect canned soups for those in need in our community!

HERE'S THE GAME PLAN

- Throwing a Super Bowl party? Ask each person to bring at least one can of soup with them.
- Run a restaurant or bar that is hosting a Super Bowl party? Consider offering a small discount to everyone who brings a can of soup with them to donate.
- Set up a collection box for your neighborhood, school, center or organization to deposit their soup donations.
- Churches, collect cans of soup at Super Bowl Sunday service.
- Pick up a few extra soup cans on your next grocery shopping trip and drop them off to the Food Bank.



Drop off your donations to our specially-marked Super Bowl collection box at our Newark location.
222 Lake Drive, Newark, DE 19702

If you collect more than 20 bags, we can even arrange a pick-up.

Our goal is to collect 2,025 pounds of soup by February 17.

For more information, please contact Sue DeNardo, Community Engagement Manager, at (302) 292-1305 ext 250 or sdenardo@fbd.org.



And no matter who wins the game, we all win when we tackle hunger together!



FREE spay /neuter surgeries for qualifying Delaware residents!!!

February is Spay and Neuter Awareness Month, and we are partnering with Delaware Department of Health and Social Services (DHSS) to offer FREE DOG AND CAT SPAY/NEUTER SURGERIES, for qualifying Delaware residents, at Brandywine Valley SPCA Animal Health Centers in New Castle, Dover, and Georgetown during State Spay Days.

To qualify for the

low-income Spay & Neuter Program, members of the public must be Delaware residents 18 years of age or older; and participate in specific assistance programs.

Visit <https://fixedandfab.com/#eligibility> to see if you qualify.

Register your pet for an appointment at one of our three participating locations at bvspca.org.

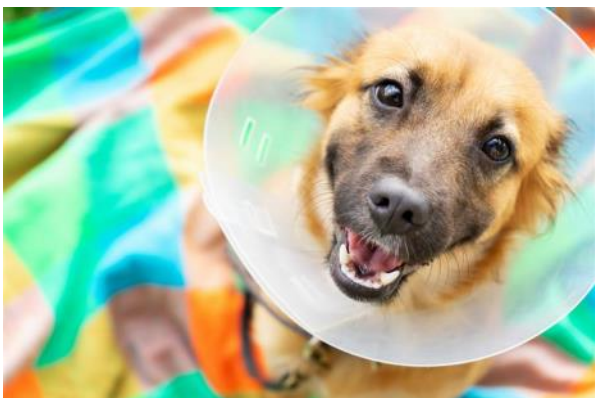
A NOTE FROM OUR PARTNER

Free State Spay Days

Sponsored by the Office of Animal Welfare State Spay Neuter Fund.

For more information, go to www.fixedandfab.com

DELAWARE HEALTH AND SOCIAL SERVICES
Division of Public Health
Office of Animal Welfare



A NOTE FROM OUR PARTNER



BECOME A VOLUNTEER ADULT LITERACY TUTOR!

No experience required

Upcoming New Tutor Information Sessions

Attend to learn more about becoming a volunteer adult literacy tutor

Tuesday, February 4, 1:00 pm - 2:00 pm

Tuesday, March 4, 6:30 pm - 7:30 pm



For more information, please contact Volunteer Delaware 50+ at 302-255-9101 or email Arundhati.Ghosh@delaware.gov.

BLACK HISTORY MONTH



BLACK HISTORY CELEBRATION
MEET DELAWARE TRAILBLAZERS
SAT., FEBRUARY 1, 11A-2P
WALNUT STREET YMCA, WILMINGTON

FREE EVENT! LEARN ABOUT DELAWARE TRAILBLAZERS
PERFORMANCES | KIDS ACTIVITIES | SHOP LOCAL BLACK-OWNED BUSINESSES



WALNUT STREET YMCA
1000 N WALNUT ST
WILMINGTON

FOR FULL DETAILS:
NEWCASTLEDE.GOV/BHM

A NOTE FROM OUR PARTNER



Easterseals *Support Groups*

If you are caring for an adult with a disability or aging condition, join our Caregiver Support Group to share experiences, learn about resources, and provide support for one another.

When

Virtual and in-person options:

- 2nd and 4th Tuesday at 10am
- 1st Wednesday at 1pm

More info

Contact one of our case managers:

- New Castle – 302-221-2076

“One of the greatest gifts a person can give another is support. Anything is possible when you have the right people there to support you.”

resources@esdel.org
302-221-2291
de.easterseals.com



ONGOING OPPORTUNITIES

For more information, please contact Volunteer Delaware 50+ at 302-255-9746 or email Guadalupe.Murphy@delaware.gov

Use your compassion and talents to make a difference. Volunteer with AccentCare® Hospice today.

You can support our local patients and families by becoming a:

Ambassador Volunteer
• Community outreach, volunteer recruitment

Legacy Volunteer
• Create legacies: books, journals, CDs, memory bears, crafts

Office Volunteer
• Administrative assistance

Social & Companionship Volunteer
• Reading, walking, caregiver relief

Music Companionship Volunteer
• Play, sing and share music with patients, families and friends

Children's Bereavement Camp Volunteer
• Work with camp staff and children

Bereavement Volunteer
• Emotional support for patient family and friends

Spiritual Presence Volunteer
• Support patient's faith related requests

Vigil Volunteer
• Companionship during patient's last hours

Pet Visitation Volunteer
• Patient visits with certified Pet Partners or Therapy Dogs

Special Projects Volunteer
• Volunteer support for special groups or events like We Honor Veterans



For more information, please scan the QR code or contact our volunteer service coordinator at: VeronicaFlemmings@AccentCare.com or 302.533.3800

accentCare.
accentcare.com/volunteer

AccentCare welcomes all persons in need of its services and does not discriminate on the basis of age, disability, race, color, national origin, ancestry, religion, gender, gender identity and/or gender expression, sexual orientation, or source of payment.
© 2014 AccentCare, Inc. All rights reserved.



- Why did the volunteer bring a football to the charity event?**
Because they wanted to pass on the good vibes!
- Why don't volunteers ever get tackled?**
Because they're always helping out and never slacking off!
- What's a football team's favorite volunteer activity?**
Touchdown for a good cause!
- Why did the football coach start volunteering?**
He wanted to score some extra community points!



Blood Bank of Delmarva

BLOOD BANK OF DELMARVA

DONOR REFRESHMENT VOLUNTEERS

in centers or mobiles; 18+

Active role, interact with people, restock, and sanitize tables. Training Online and in person. Center Schedule: 3 hours, once a month or once a week

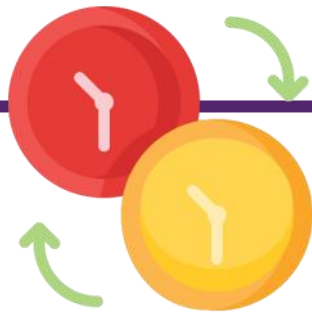
VOLUNTEER NOW



2025 CareWear Meeting Locations

- **Claymont: N. Wilmington CareWear** at B'nai B'rith House
 - Group Leader: Anna Marie Adams (302-985-1123)
 - Meeting Date/Time: Third Friday of every month from 10am-11:00am
 - Location: 8000 Society Drive, Claymont 19730
- **Hockessin: Must Love Yarn Fiber Group** at the Hockessin Library
 - Group Leader: Library Staff (302-239-5160)
 - Meeting Date/Time: Wednesdays at 1:00pm
 - Location: 1023 Valley Road, Hockessin 19707
- **Newark: Crochet Club Plus** at the Newark Wesleyan Church & VFW Post 475
 - Group Leader: E. Talley Brown – connect with us on Facebook (302-255-9746)
 - Meeting Dates/Times: 5:30 pm - 7:30pm
 - First and Second Tuesdays of the month
 - Location: Newark Wesleyan Church – 708 W Church Rd, 19711
 - Third and Fourth Tuesdays of the month
 - Location: VFW Post 475 – 100 Veterans Dr, Newark 19711
- **Newark: Sit N Stitch** at the Newark Senior Center
 - Group Leader: Kathleen Robinson (robinskmb@yahoo.com)
 - Meeting Date/Time: Second & Fourth Wednesday/month from 10am - 12pm
 - Location: 200 White Chapel Drive, Newark 19713
- **New Castle: The CareWear Project** NCC Office
 - Guadalupe Murphy: Guadalupe.Murphy@delaware.gov or 302-255-9746
 - Office Hours: Mon - Fri, 8:00am-4:00pm
 - Charles Debnam Building, 1901 N. Dupont Highway, New Castle, DE 19720

ONGOING OPPORTUNITIES



2025 Bags2Mats Workshops at the Newark Senior Center
(200 Whitechapel Dr, Newark, DE 19713)

Workshops will occur on the **second & fourth THURSDAY** of every month **from 9:30 AM - 11:30 AM**

Program Description:

The Bags2Mats for the Homeless program consist of dedicated volunteers who recycle plastic bags and soft-like plastic material to create mats for the homeless in Delaware. Those passionate about volunteering, serving the homeless and the environment, are welcome to join us every month to collect, cut, and loop plastics, to ultimately be crochet or weaved onto a 3x6 loom to make the mats. The plastic mats help to retain body heat while also keeping bedding and other belongings dry and clean. Scraps of plastic are also used to make pillows to accompany the mats. Volunteers meet weekly but home and group volunteers are also always welcome.

1. January 9 & 23
2. February 13 & 27
3. March 13 & 27
4. April 10 (NO 4/24- flea market)
5. May 8 & 22
6. June 12 & 26
7. July 10 & 24
8. August 14 & 28
9. September 11 & 25
10. October 9 – last meeting for 2025
11. NO November workshops
12. NO December workshops



Help us turn plastic bags into PLastic yARN (PLARN)

2025 **9:30am-11:30am** **Bags2Mats**

Benefitting the Bags2Mats for the Homeless, a VOLUNTEER DELAWARE 50+ initiative.

Newark Senior Center

200 Whitechapel Dr, Newark 19713

2nd & 4th Thursday of each month



Volunteers collect, cut, loop then crochet or weave the plastic material into a mat. Mats create a barrier between the wet, dirty, and cold ground, as well as help retain body heat. One mat = 600 bags
For more information, email Guadalupe.Murphy@delaware.gov.

f @Bags2MatsDE

Every tomorrow should have you in it.

I ♥ you
Get Screened™



DELAWARE HOSPICE

Since 1982

DELAWARE HOSPICE



APRIL 6, 2025

For more information, please contact Volunteer Delaware 50+ at 302-255-9746 or email Guadalupe.Murphy@delaware.gov

ONGOING OPPORTUNITIES

Front Desk Volunteers Needed



Are you eager to make a positive impact in a compassionate environment? Our in-patient center is seeking friendly and dedicated Front Desk Volunteers to welcome our patients, families, and visitors with a smile.

Why Volunteer With Us?

- Make a Difference Daily:** Your welcoming presence provides comfort and reassurance to those in need.
- Join a Supportive Community:** Collaborate with a team committed to compassionate, expert care and mutual support.
- Flexible Scheduling:** Choose shifts that fit your availability with ease, and manage your volunteer hours in our online scheduling system.

Openings Available: 7 days a week
Shift Length: 4-hour blocks
Operating Hours: 8:00 AM – 8:00 PM
Location: 100 Patriots Way, Milford

Role of a Front Desk Volunteer:

- Greet Visitors:** Be the first friendly face that welcomes everyone to our center.
- Assist with Administrative Tasks:** Support our staff with various administrative duties as needed.
- Prepare Refreshments:** Help make coffee and ensure our visitors have a comfortable experience.

Please note: This position does not require answering incoming phone calls, so there's no need to manage a multi-line phone system or transfer calls.

Meet diverse people and have fun while engaging in cross cultural activities in Delaware!



Promoting Peace through Understanding by fostering cross-cultural exchange and experiences.

info@ptpde.org

www.ptpde.org

Bring your computer skills and volunteer from home to make an impact in our community on one of our many exciting committees.

Public Relations Committee

Create fliers and social posts, assist with mailing list and announcements

Skills: Canva and Mail Chimp

Program Committee

Brainstorm ideas for virtual and in person exchange programs, support tech in online meetings

Skills: Zoom

Fundraising Committee

Assist grant research & writing, foster philanthropic relations

Skills: Word, Excel, Google Docs/Sheets

Membership Committee

Increase public awareness, encourage partnerships, new membership and volunteers

Skills: Excel/Google Sheets

ONGOING OPPORTUNITIES



Shoes That Fit- Delaware Shoe Bank Model (Fall 2025- Forward)



- New Castle County Homeless Advocates**
- Appoquinimink School District
 - Brandywine School District
 - Christina School District
 - Colonial School District
 - NCC Vo-Tech School District
 - Red Clay School District

- Sussex County Homeless Advocates**
- Cape Henlopen School District
 - Delmar School District
 - Indian River School District
 - Laurel School District
 - Milford School District
 - Seaford School District
 - Sussex Vo-Tech School District
 - Woodbridge School District

- Kent County Homeless Advocates**
- Caesar Rodney School District
 - Capital School District
 - Lake Forrest School District
 - Smyrna School District

- Receive sneaker shipments
- Maintain onsite inventory of sneakers for emergency/pick up orders
- School liaison
 - Collects orders from schools
 - Coordinate delivery to schools
- Deliver to schools
- Maintains accounting for shoe inventory
- Supports end of year and grant reporting

CALIFORNIA

California office ships 500 shoes at a time to Friendship House based on prior year shoe requests (sizes, M/F)

- BENEFITS**
- Leverages the expertise of two long-term Delaware non-profits to support an essential service to School Districts
 - Reduces shipping costs by delivering all sneakers to one location in NCC
 - Adds a physical presence in NCC for added service to provide emergency or pick up order fulfillment
 - Maintains/Sustains the value of the STF DE sneaker program - convenient ordering and delivery of shoes for homeless students at no cost to the requesting school

SHOES THAT FIT
Every child deserves them®
DELAWARE CHAPTER

Obtains funding to purchase all sneakers for Student Shoe Bank




ONGOING OPPORTUNITIES

40TH ANNIVERSARY DELAWARE HOSPICE

Apply Today!

Seamstress and Crafter Volunteers Needed



Delaware Hospice is looking for crafty volunteers who would like to share their skills with our patients and families.



Memory Bears are crafted at no charge for families of patients in one of our Delaware Hospice programs. Bear patterns and supplies are provided for all orders and made possible through program donations.



Twiddle Muffs are knitted and crocheted muffs which help to alleviate agitation and restlessness in patients with Alzheimer's disease and Dementia. Patients and families benefit from the calming sensory objects.

Patient Care Volunteers Needed

At Delaware Hospice, our team of volunteers provide companionship to patients, respite for caregivers, assist with shopping and errands, and so much more!

Patient Care Volunteers

- Check-in calls with patients.
- Care calls: provide a listening ear to patients.
- Visit with a patient (read, share stories, play cards or board games).
- Provide transportation to doctor appointments, store or pharmacy.
- Walk with a patient.
- Run an errand.
- Provide vigil support as a patient nears death.
- Give haircuts to patients.
- Assemble and deliver care gifts to patients.
- Pet Therapy Visits.
- Music Therapy Visits.

RN Volunteers

- Medication disposal after a patient has passed or is discharged.
- Assist staff with vaccination clinics.
- Assist with clinical staff education.

Vet-to-Vet Volunteers

- Veterans visit patients who are also veterans and talk about the patient's military experiences.



Office Support Volunteers Needed

At Delaware Hospice, our team of volunteers offer a wide range of talents to support our patients, families and staff.

Office Support Volunteers may assist with:

- File documents
- Assemble patients information packets
- Assist with mailings
- Provide clerical support
- Run errands
- Assist with medical records
- Answer telephones



For more information, contact Volunteer Delaware 50+ at 302-255-9746 or email Guadalupe.Murphy@delaware.gov



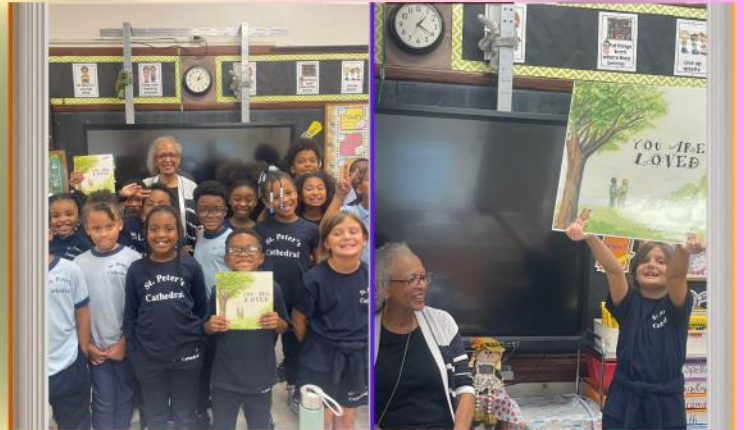
Brandywine Valley SPCA (BVSPCA) is thrilled to announce a new partnership with DC Health aimed at enhancing and modernizing animal services in the nation’s capital. Effective January 1, 2025, BVSPCA will take over all animal control, care, field, medical, and stray services, as well as adoptions for Washington DC. BVSPCA’s expertise in animal care, and control will be instrumental in ushering in ensuring compassionate service for animals in DC.

Read the full article at bvspca.org

ONGOING OPPORTUNITIES



Board Member Volunteer Opportunity



A recent reading at St. Peter Cathedral School in Wilmington.

Children Empowered by Love, Inc (CEBL) has been a Volunteer Delaware 50+ Community Partner for many years. Judith Gupton-Wiley, Director and lead volunteer of CEBL wrote a children’s book entitled "You Are Loved" which the organization donates to young children who are considered "at risk" because of their living environments, physical challenges, and/or other factors that might be impediments to them reaching their full potential to thrive. In addition to CEBL donating the book, Director Gupton-Wiley also gives readings to children groups.

Children Empowered by Love, Inc. is currently taking applications for new Board members. Also, if you know of a school or children’s organization that might like to have a book reading, please contact Volunteer Delaware 50+ at 302-255-9882.

Are you a Volunteer Delaware 50+ Member or Community Partner?

Do you enjoy meeting with others?

Have skills with planning engaging events?

Are you creative and enjoy making the world a better place through volunteerism?

YOU may be our next New Castle County Volunteer Delaware 50+ Advisory Council Member!

We are looking for a few volunteers and/or community partners to help our Advisory Council grow! Please contact the Volunteer Delaware 50+ NCC office at 302-255-9882 for more information.



For more information, please contact Volunteer Delaware 50+ at 302-255-9746 or email Guadalupe.Murphy@delaware.gov



Shelter Skip Day Program is now available at all Brandywine Valley SPCA Campuses.

Studies have shown that shelter dogs who were able to take field trips off campus were 5x more likely to be adopted than dogs who did not go on outings. These field trips offer beneficial mental stimulation with meeting new people and enjoying different environments, where our dogs can exert pent up energy and reduce their stress levels. These experiences also allow for the dogs to gain useful social and life skills that improve their mental stability and make them better adoption candidates.

This program provides a super fun and rewarding day for Community Service Groups that want to participate in Pack Walks, as well as those who love the company of a dog, but are unable to have their own. By taking a dog off campus for the day, that animal is able to connect with the community with a broader reach, which in turn increases

the chance of adoption and potentially reduces the length of stay in the shelter. Brandywine Valley SPCA will provide specific Backpacks with all of the necessary supplies for an outing in addition to suggested destination locations. Skip the Shelter Day Participants will also have the opportunity to Foster the animal overnight, as well as the ability to adopt if they find their forever love during a field trip!

We are so thrilled for this program and the benefits for our dogs, especially those that tend to be overlooked on campus, as well as those who have been in the shelter for an extended length of stay! We would love to be able to share the news with more members of the community. So far this has been very successful and the dogs are LOVING their days out.

ONGOING OPPORTUNITIES

Shelter Skip Day

Play Hooky With Us!

Our dogs would love to spend time out of their kennels with you! Volunteer to take an adoptable dog out for a fun outing such as a hike, a coffee date, or a meal at a pet friendly location. Field trips can last from an hour to all day. Whatever works for you, works for us!

Scan for more info!

For more information, contact Volunteer Delaware 50+ at 302-255-9746 or email Guadalupe.Murphy@delaware.gov



When you donate your gently used clothing to Forget Me Not Families, they become someone else's new garments. Because of YOUR generosity, we are able to bless individuals and families regularly and provide decent clothing and other donated items to those in our community facing difficult times. Please help us to continue to bless even more families by donating items you no longer need.

In addition to accepting gently used adult and children clothing, we also accept personal care items, underwear and socks, shoes, blankets and all things children such as toys, children's furniture, diapers, wipes and care items.

VOLUNTEER - SPREAD THE WORD

Drop off location:

132 Sandy Drive, Newark, 10713
 501 W. Main Street, Middletown
 1183 S. DuPont Highway, New Castle
 1458 Bear Corbitt Rd, Bear
 220 Casho Mill Rd, Newark
 2410 Newport Gap Pike, Wilmington
 1000 Old Lancaster Pike, Hockessin



ONGOING OPPORTUNITIES



CREATIVE MENTORING®

A School-Based Mentoring Program That Works!



BECOME A MENTOR TODAY!

- Mentors meet with their students for an hour once a week during the school year.
- Mentors come from all walks of life: retirees, high school students, office workers, church members, community volunteers, etc. Anyone with a passion for helping children and an ability to accept kids "where they are" can be a successful mentor.
- Mentoring allows adults to give something of themselves in a way that's both selfless and deeply fulfilling.
- Mentors have the privilege of watching their mentees' lives improve as a result of the help, friendship, and guidance they provide.

For more information, please contact Volunteer Delaware 50+ at 302-255-9746 or email Guadalupe.Murphy@delaware.gov

Blood Bank of Delmarva

Volunteers Needed

You join a team of volunteers and staff committed to making our community better. You can recruit, care for, and/or give great service to blood donors. You can assist staff behind scenes so they accomplish more. Your time and skills help BBD have safe lifesaving blood.



You can help to:

- Promote donating blood and recruit volunteers at community events
- Enhance the donor experience by greeting and welcoming our donors, sanitizing donor areas, helping donors through the donation journey, restocking supplies in donation area, or serving them in the refreshment area after they saved a life in a center or at mobile drives
- Administrative support (office, video, photo, etc.)
- Create smiles in the mascot Bloodhound suit
- Let us know what skills you bring! Let's start something new!

REQUIREMENTS

- Complete an online volunteer application
- Attend an online orientation
- Attend specific training
 - Online and/or in person
- Ages 14-15 must have parent/adult actively volunteering with them
- 16-17 can volunteer alone in a greater role
 - Other roles may be available if part of a school HOSEA or Allied Health program connected

Scan the QR code for more information or to join our lifesaving team:



delmarvblood.org/volunteer | williamson@bbd.org | 302.737.8405 ext 819

ONGOING OPPORTUNITIES

For more information, contact Volunteer Delaware 50+ at 302-255-9882 or email Guadalupe.Murphy@delaware.gov

New Castle County Police

Senior Roll Call Lifeline Volunteers

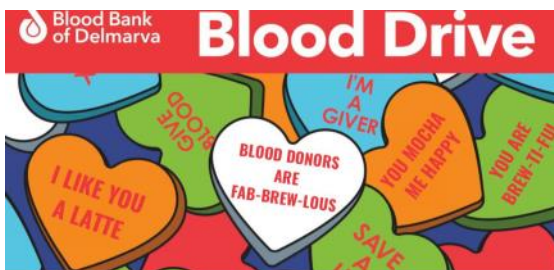
Volunteers needed to help oversee the automated dialer, attentive to signs of distress or the sound of answering machines, and follow set protocols until they establish contact with the subscriber or dispatch assistance.



Volunteer shifts run from 6:30am - 10:30am daily



New Castle County Public Safety Building, 3601 N. DuPont Hwy, New Castle, DE 19720



Brew HaHa! Avenue North

Tuesday, February 04, 2025
09:00 am - 01:00 pm
1000 Renaissance Way
Wilmington, DE 19803



All presenting donors will receive a \$5 Brew HaHa! gift card provided by Brew HaHa! as a Thank you for coming out to donate.



Scan the QR code or Sign up by clicking [HERE](#)

888.8.BLOOD.8 •

VOLUNTEER WITH US



The Grand Opera House
The baby grand
The Playhouse

Show Corps Volunteer:
Bartender (licensed)
Ticket Check
Usher
Coat Check

Grand Marshals:
Administrative Support
Welcome Visitors
Special Events / Tours

Enjoy wonderful performances while volunteering!!!

www.thegrandwilmington.org/support-us/ways-volunteer

VITAS® Healthcare

For more information, contact Volunteer Delaware 50+ at 302-255-9746 or email Guadalupe.Murphy@delaware.gov

ONGOING OPPORTUNITIES



Will You Provide Comfort and Care to the Most Vulnerable?

Join us! Our hospice volunteers become part of our team, building careers and lifelong friendships

VITAS* Healthcare volunteers add to hospice patients' quality of life during their remaining months, weeks, and days. By providing companionship, volunteers ensure patients and their loved ones have the support they need. As a **VITAS volunteer**, you'll receive comprehensive training and potentially earn rewards of your service. You'll become part of our professional team of doctors, nurses, aides, chaplains and social workers—and forge alliances that you'll carry with you, possibly for life.

Fetch a friend to join the VITAS® paw pals



"I like being tickled by my friends at the nursing home. I give them big kisses to say thank you! Don't just lie around feeling bored... become a VITAS Paw Pals volunteer, and get a whiff of the good life!"

Registered Paw Pals bring joy to hospice patients by visiting them at home, in nursing homes and assisted living communities, as well as in hospitals.

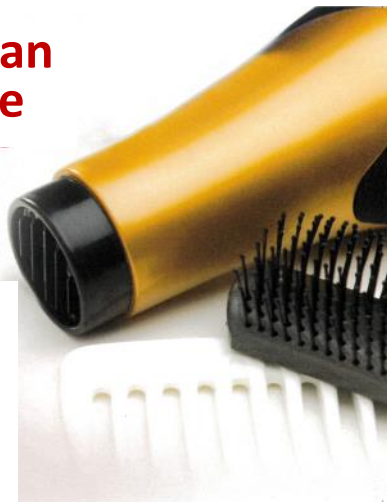
VITAS Paw Pals treat hospice patients and their families to ...

- Unconditional love and friendship
- Entertainment and amusement
- Companionship
- Happy memories of past pets
- Comfort during times of loss, pain and stress
- Activity and motion



These Tools Can Change a Life

Do you enjoy doing hair or pampering people or have cosmetology experience? Join us and become a VITAS* Healthcare Volunteer and to help patients in need and make them look and feel beautiful.



Bring joy and comfort to hospice patients.

Be Their Voice, Tell Their Story

Help a hospice patient turn their memories into a memoir as a VITAS LifeBio volunteer.

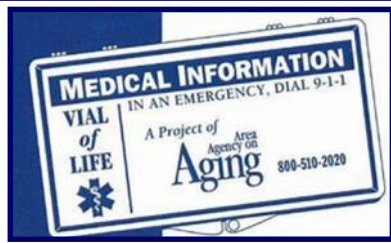


Even after death, the story of a life lives on by those who are willing to tell it. Join our team as a **VITAS* Healthcare LifeBio Volunteer**. Leverage your listening and writing skills to help hospice patients tell their stories, creating keepsake biographies for their loved ones to cherish for years to come.

Bring joy and comfort to hospice patients and families.

RESOURCES

The Vial of L.I.F.E program, offered free by New Castle County Emergency Medical



Services, assists seniors and disabled residents by providing vital medical information during emergencies. Simply fill out a medical form, place it in a labeled bottle in your refrigerator, and attach the provided magnet to signal EMS. This ensures that essential details are quickly accessible when you need help. To get your Vial of L.I.F.E, contact 302.395.8184 or email vialoflife@newcastlede.gov. Stay safe and prepared!

CHARITY CROSSING'S

Giveaway Items:
Household Items,
Pet Items, Packaged Foods,
Toys, Clothing, etc

UPCOMING GIVEAWAY

Please **DO NOT SELL** Donated Items.
Respect our Volunteers.
Follow Guest Guidelines.
Violators will not be allowed.

Helping Our Community and Environment
Recycle | Reuse | Reclaim | Restore | Repurpose

For an updated listing of giveaway dates and locations, visit:
charitycrossing.org/cc-giveaway

Sign Up for Meals

- City Fare Meals On Wheels / St. Anthony's Center:
302-421-3734
- Newark Senior Center:
302-737-5747



MealsOnWheelsDE.org

To view a pdf version online, visit:
dhss.delaware.gov/dhss/dsaapd

The Delaware ADRC is your one-stop access point for information, assistance and referral to resources that support older Delawareans, adults with disabilities and caregivers.

CONTACT DELAWARE ADRC
Phone: 1-800-223-9074
Email:
DelawareADRC@delaware.gov

GUIDE TO SERVICES

For Older Delawareans and Persons with Disabilities



Protect Yourself and loved ones from Medicare fraud.

Senior Medicare Patrols (SMPs) empower and assist Medicare beneficiaries, their families, and caregivers to prevent, detect, and report health care fraud, errors, and abuse.

Delaware Senior Medicare Patrol
1- 800-223-9074
barbara.jackson@delaware.gov



Senior Roll Call Lifeline is a free program provided by New Castle County, Division of Police, that makes daily calls to the homes of our elderly or disabled members to ensure they are doing well and do not require emergency assistance. If after several attempts the calls are unsuccessful, emergency help is sent to the home to check on the well-being of the member. For more information call 302-255-9878.

RESOURCES

24 Hours of Giving to Nonprofits in the First State

**March 6, 2025 at 6:00 pm to
March 7, 2025 at 6:00 pm**

Do More 24 Delaware is designed to help nonprofits increase capacity and engage new donors. This is a collaborative effort to celebrate philanthropy and spur impact in the Delaware community. To learn more, visit domore24delaware.org.

Support Your Favorite Nonprofits on Delaware's Biggest Day of Giving!
For Nonprofits: domore24delaware.org/signup

Join us for Delaware's Largest Day Of Giving



MARCH 6-7, 2025

Visit DEGives.org to support these and other Delaware nonprofits year round.

RESOURCES

State Employees' Charitable Campaign

Have you heard about the **Paid Volunteer Leave** for State of Delaware employees as part of the State Employees' Charitable Campaign?

*The Department of Human Resources is excited to announce a new Paid Volunteer Leave policy designed to **encourage executive branch employees to volunteer at charitable organizations** that have been approved to participate in the State Employees' Charitable Campaign (SECC). This new policy provides executive branch employees with paid time off to contribute their time and talent to the well-being of our communities. Under this policy, employees may volunteer up to 8 hours per year during work hours at participating SECC charities across our state. secc.delaware.gov*

Although the SECC fund raising campaign is held **ONLY** during the fall months, state employees are able to utilize their **Paid Volunteer Leave** and serve with an approved charity, starting **June 1st**. Leave must be approved and submitted at minimum, in 1-hour increments.



TIMELINE

February 1 - March 31:

Open Charity Application Period

February - May 31:

Charity Application Review Period

June 1:

State employees may begin to serve with approved charities (Paid Volunteer Leave)

June 1 - August 31:

Development of Promotional Materials

September 1 - October 31:

Pledge period for state employees. Direct one-time payment via credit card or through payroll to one or more participating organizations.

November 1 - February 28.:

Wrap up campaign. Vendor (currently United Way of Delaware) report result by February 28 of completed campaign.

For more information, visit

SECC.delaware.gov

Volunteer Delaware 50+ NCC Community Partners included in the 2023 State Employees' Charitable Campaign Approved Charities

Alzheimer's Association	Habitat for Humanity
American Cancer Society	Literacy Delaware
American Red Cross Delmarva	Lutheran Community Services
Blood Bank of Delmarva	M.O.T. Senior Center
Brandywine Valley SPCA	Meals on Wheels Delaware
Child, Inc.	Nemours Children's Health
Children & Families First	Newark Senior Center
Christiana Care Health System	PAWS for People
Connecting Generations	Read Aloud Delaware
ContactLifeline	Ronald McDonald House of DE
Delaware Center for Horticulture	Special Olympics Delaware
Delaware Hospice, Inc.	Supporting Kidz, Inc.
Easterseals Delaware	Tri-State Bird Rescue & Research
Family Promise	United Way of Delaware
Food Bank of Delaware	



RESOURCES

This #GOMonth, as we focus on organizing, and of course, the first and most important step is **decluttering!!**

Check out what our friends at **Consciously Cleared & Contained LLC** created to highlight 3 Delaware organizations that will gladly receive donations of your unwanted items.




FRIENDSHIP HOUSE
Everyone deserves a place to call home

Donate: clothing for people of all ages; shoes, belts, hats, and purses-in good condition; underwear, socks, and bathing suits- must be new; everyday clothing (sweatshirts, jeans, sweatpants, sneakers, etc), men's clothing, and larger sizes clothing (3XL - 5XL). Frequently needed household items -- call 302-652-8133 to hear about current needs.

WORKS WITH PEOPLE WHO ARE EXPERIENCING HOMELESSNESS





CHILD, INC.
Leading advocate for DE children

Donate: clothing, school supplies, toys, crafts, games, hygiene products, household items

Recycle your old cell phone via Phones 4 Charity, used to help victims of domestic violence

HELPS CHILDREN WHO'VE BEEN NEGLECTED OR ABUSED, ARE IN FOSTER CARE, OR RUNAWAY/HOMELESS





PHOENIX USED CLOTHING
Female/minority owned

Donate: clothes (baby to adult), toys/baby items, bedding, shoes, accessories, household items, decor, small appliances, durable medical equipment

Textile recycling

SUPPORTS LOCAL SHELTERS & PEOPLE WITH MENTAL HEALTH AND/OR IN RECOVERY



1. DECLUTTER
Remove things from your home permanently

2. CLEAN
Remove dirt from surfaces

3. ORGANIZE
Create homes [for our things]

4. TIDY
Put things back into their homes

Source: Cas Aarsen, ADHD reWired #528
Image by @consciouslyclearedandcontained

Less Chaos & More Calm