

# VOLUNTEER DELAWARE 50+

*New Castle County Edition*



## COMMUNITY RESOURCES & OPPORTUNITIES

**Check out this month's edition of Volunteer Delaware 50+'s Newsletter! We highlight some of our community partner's volunteer opportunities and events for seniors in New Castle County!**

**Scroll through to find the perfect opportunity for you and maybe find something you have never heard of! Make sure to 'meet' one of our volunteers in "The Spotlight".**

**To learn how you can become a member of Volunteer Delaware 50+, please call 302-255-9746 or email [Guadalupe.Murphy@delaware.gov](mailto:Guadalupe.Murphy@delaware.gov)**

Volunteer Delaware 50+ is a statewide program offered through the State

Office of Volunteerism within the Division of State Service Centers.

The mission is to engage persons 50 and older in volunteer service, to meet critical community needs and to provide a high quality experience that will enrich the lives of Volunteers.

**ENROLL TODAY!**

**[Volunteer.Delaware.gov/Volunteer-Delaware50](https://Volunteer.Delaware.gov/Volunteer-Delaware50)**

What is Volunteer Delaware 50+?  
Pages 1 – 3

August Birthdays  
Page 4

Spotlights  
Pages 5

News From Our Partners & Volunteer Opportunities  
Pages 6 – 29

Community Resources  
Page 30



## 2023 NEW CASTLE COUNTY COMMUNITY PARTNERS

**1in7B Foundation**  
info@1in7BFoundation.org  
**A Matter of Balance**  
302-515-3026  
**Alzheimer's Association**  
215-561-2919  
**American Cancer Society**  
1-800-227-2345  
**American Red Cross of Delmarva**  
302-656-6620  
**B'nai B'rith House**  
302-798-6846  
**Big Brothers Big Sisters of Delaware**  
302-998-3577 ext 105  
**Blood Bank of Delmarva**  
302-737-8405  
**Brandywine Valley SPCA**  
302-858-4202  
**CareWear Project**  
Knitters and Crocheters  
**Bags2Mats for the Homeless**  
302-255-9746  
**CASA (Office of Child Advocate)**  
Count Appnt. Spec. Advo.  
302-255-1730  
**Channie P. Bradley Senior Services**  
215-520-7525  
**Charity Crossing**  
info@charitycrossing.org  
**Child, Inc.**  
302-762-8989  
**Children & Families First**  
302-777-9757  
**Children Empowered by Love, Inc.**  
childrenempoweredbylove@comcast.net  
**ChristianaCare**  
302-733-1284  
**Wilmington Hospital**  
302-428-2206  
**ChristianaCare in Collaboration with AccentCare** (formerly known as Seasons Hospice)  
302-533-3800  
**Connecting Generations**  
302-656-2122 x0010  
**ContactLifeline**  
302-761-9800 ex. 1002  
**Delaware Center for Horticulture**  
302-658-6262 ext. 108  
**Delaware Ecumenical Council on Children and Families**  
302-225-1040  
**Delaware Hospice**  
302-478-5707

**DE Museum of Natural History**  
302-658-9111 X 324  
**Delaware Theatre Company**  
302-594-1100  
**Easterseals Delaware**  
302-324-4444  
**Family Promise of Northern NCC**  
302-998-2222  
**Food Bank of Delaware**  
302-292-1305 ext 254  
**Forget Me Not Families**  
302-416-2897  
**Grand Opera House**  
302-658-7897  
**Habitat for Humanity of NCC**  
Construction Site: 302-652-0365  
ReStore Wilmington: 302-652-5181  
ReStore Middletown: 302-449-1414  
**Hagley Museum & Library**  
302-658-2400 X257  
**Literacy Delaware**  
302-658-5624  
**Lutheran Community Services**  
302-654-8886  
**Lutheran Senior Services Inc.**  
302-652-7373  
**MOT Jean Birch Senior Center**  
302-378-4758  
**NAMI DE (National Alliance on Mental Illness-** 302-427-0787  
**New Castle County**  
**Absalom Jones Senior Center**  
302-995-7636  
**Depart. of Community Services**  
302-395-5640  
**New Castle County Libraries**  
302-395-5617  
**NCC Senior Roll Call Lifeline**  
(302) 395-8159  
**Nemours Children Hospital**  
302-651-6096  
**New Castle Senior Center**  
302-326-4209  
**Newark Senior Center**  
302-737-2336  
**Meeting of the Minds**  
**Newark Meals on Wheels**  
302-737-5747  
**Senior Surfers**  
302-737-2336  
**Patches of Love**  
302-255-9746  
**PAWS for People**  
302-351-5622

**People to People: Delaware Chapter**  
info@ptpde.org  
**ProMedica Hospice Delaware**  
302-737-7080  
**Read Aloud Delaware**  
302-656-5256  
**Ronald McDonald House of DE**  
302-428-5340  
**Special Olympics Delaware**  
302-831-4653  
**St. Anthony's Community Center**  
302-421-3721  
**City Fare Meals on Wheels**  
302-421-3734  
**St. Anthony's Senior Center**  
302-421-3735  
**Stockings for Soldiers Delaware Inc.**  
info@StockingsForSoldiers.org  
**Supporting Kidds Inc.**  
302-235-5544  
**The Ministry of Caring**  
**Emmanuel Dining Room E/S/W**  
302-652-3228  
**Thomas Edison Charter School**  
302-778-1101  
**Tri-State Bird Rescue & Research Inc.** 302-737-9543 x102  
**United Way of Delaware**  
302-573-3705  
**Volunteer Delaware**  
302-381-3594  
**Volunteer Delaware 50+ NCC Advisory Council**  
302-515-3026  
**Warriors Helping Warriors**  
302-696-2320  
**Wilmington Senior Center**  
302-651-3400  
**Wilmington VA Medical Center**  
302-994-2511 X4051  
**Winterthur Museum, Garden & Lib.**  
800-448-3883

**For more information on how to become an official Volunteer Delaware 50+ Community Partner, please call 302-255-9746 or email [Guadalupe.Murphy@delaware.gov](mailto:Guadalupe.Murphy@delaware.gov)**

# VOLUNTEER DELAWARE 50+



DELAWARE HEALTH AND SOCIAL SERVICES  
Division of State Service Centers State Office of Volunteerism  
Governor's Commission on Community and Volunteer Service

Volunteer Delaware 50+ focuses on helping individuals 50 years of age and older, use the skills and talents learned over the years, or develop new ones while serving in a variety of volunteer activities within the community. Volunteer Delaware 50+ volunteers determine their preferred level of commitment. Come join the more than 2,500 Volunteer Delaware 50+ members and start making a difference today!

## What are the benefits of becoming a Volunteer Delaware 50+ member?

- All members receive supplemental insurance protection in case anything happens **while** they are volunteering with one of our community partners (excess volunteer liability insurance & excess automobile liability insurance)
- Opportunity for outstanding volunteers to attend a free recognition luncheon and enter to win door prizes (must meet required hours)
- Opportunity to receive a monthly listing of one-time volunteer projects, upcoming events and ongoing volunteer opportunities (sent via email)
- Invitation to attend free educational workshops on topics pertaining to the 50+ community (sent via email)
- Tracking of hours and years of service

## Why do you collect my volunteer hours?

- Helps us to qualify for grants and places us in a better position to advocate for continued funding, not only for our program but also for our community partners
- Helps us to quantify all the amazing volunteer work Delawareans are doing for our state/in our communities
- Helps us to identify and recognize our outstanding volunteers through our annual Volunteer Recognition Luncheon

## Are you already a volunteer with one of our community partners and would like to also be a member of Volunteer Delaware 50+?

We are always looking-for and inviting non-profit organizations to join us and become a community partner in order to offer even more opportunities to our members. If you are already a volunteer with one or more of our community partner and would like to also become a member of Volunteer Delaware 50+ please contact your local office.

**New Castle County:** please call 302-255-9746 or email [Guadalupe.Murphy@delaware.gov](mailto:Guadalupe.Murphy@delaware.gov)

**Kent/Sussex County:** please call 515-3020 or email [Danielle.Briggs@delaware.gov](mailto:Danielle.Briggs@delaware.gov) or [Bobbi.Tice@delaware.gov](mailto:Bobbi.Tice@delaware.gov)

For more information please visit [Volunteer.Delaware.gov/Volunteer-Delaware50](http://Volunteer.Delaware.gov/Volunteer-Delaware50)







## AUGUST *Birthdays*

Jane S. Barfield

Janice Gilbert

Laura Barrow

Judith Gupton-Wiley

Pre' Belardo

Alice Holliday

Rebecca Bennett

Deborah Howard

Francine Blackiston

Antonia Jerman

E. Talley Brown

Darlene McDonald

Margie Callahan

Ned Milbrandt

Mary Cella

Barbara Petrucci

Charlotte Clark

Lloyd Pyle

Linda L. Claytor

Susan Shertok

Roland Dey

Bryanne Souders

Michele Dudley

Gina Tarburton

Patricia Flanigan

Carol Winkler





**No matter where you live, YOU CAN MAKE A DIFFERENCE in the lives of those around you by simply volunteering your time to lend a hand.**

**Here is a Volunteer Spotlight submitted by a Volunteer Delaware 50+ Community Partner.**

**If you have a story you would like to share OR are you an organization that would like to highlight a senior volunteer, please let us know by emailing [Guadalupe.Murphy@delaware.gov](mailto:Guadalupe.Murphy@delaware.gov).**



**Ms. B was nominated for the Volunteer Spotlight by Tammy Carter of B'nai B'rith House, as a volunteer that goes above and beyond.**

**Ms. B came to Delaware in 1979 and was accepted to move into B'nai B'rith house 4 years ago. Since moving to B'nai B'rith, Ms. B takes on any task that comes her way. Ms. B self describes as a "get it done" person and can be found doing everything from helping new tenants get their footing, to passing out newsletters, to troubleshooting laundry machines.**

**She says if someone looks like they need help, she is right there to lend a hand. Ms. B also helps B'nai B'rith's Social Director with organizing and executing different dinners and activities for the residents.**

**In 2022 they had their first Juneteenth celebration, and this past February had their first Black History Month celebration!**

**Ms. B is also an active volunteer with Endure for Christ Ministries, Inc., and looks forward to many more years of volunteering at B'nai B'rith House.**

**Ms. B recommends that all retirees are active in their community. "If someone is in need, step up and get involved". Ms. B finds that helping around B'nai B'rith is extremely rewarding, keeps her busy, and she makes new friends while doing it!**

**If you'd like to get involved with B'nai B'rith, Ms. B says they could use some more volunteers get a break from service every once in a while for their cantina, bingo room, and during election season. She would like to see the cantina and bingo room**

**Thank you to Camille Vance, our AmeriCorps VISTA member, for capturing Ms. B's passion for volunteerism.**

**A NOTE FROM OUR PARTNER**

## PAWS for People announces new Executive Director

A longtime employee of PAWS for People has been chosen as the pet therapy nonprofit's new executive director.

Clarice Ritchie has been serving as interim director since January and was chosen by the board to take over the role permanently, the organization announced this week.

"I am honored and excited to become the new PAWS executive director," Ritchie said in a prepared statement. "In my nine years at PAWS, I have developed a deep appreciation for the great impact of this organization and its amazing staff and volunteers and look forward to shaping its future together."

Ritchie joined PAWS in 2014 as the community engagement director, coordinating volunteer appreciation, community and special fundraising events. She later served as director of events and operations. In addition to representing PAWS in the community, she successfully guided PAWS' response to the pandemic.

Prior to coming to PAWS, she worked for the American Cancer Society.

As executive director, Ritchie will continue to work with the staff, board of directors, and volunteers to grow the organization. The demand for pet-assisted therapy programs has dramatically increased since the onset of the pandemic, and PAWS has become an important driving force in the battle to improve mental wellness in the community.

Ritchie succeeds Lynne Robinson, who founded PAWS in 2005 with her golden retriever, Boo Radley. Robinson led the organization for 17 years before retiring at the end of last year.

PAWS has trained hundreds of volunteer pet therapy teams that visit sites all over Delaware and parts of Maryland, Pennsylvania and New Jersey. Most teams consist of dogs and their owners, but there are a few cats and bunnies, as well.

At hospitals and nursing homes, they cheer up patients who are sad or lonely. At schools and libraries, the dogs lend a judgment-free ear to kids who are learning how to read aloud. At "de-stress" events on college campuses, teams show-up en masse to provide a fun, calming distraction for students stressed out over exams.

PAWS volunteers also visit prisons, drug treatment centers, mental health facilities, corporations and other locations.

[www.newarkpostonline.com](http://www.newarkpostonline.com)







As of today, the Bags2Mats for the Homeless - Delaware has received **110 completed mats** from senior volunteers since the start of the calendar year. Of those, **92 have been distributed** to twenty-one local non-profits to benefit individuals experiencing homelessness. The remaining mats are enroute to be distributed in the next week.

It takes 500-600 plastic bags to make just ONE mat.

**MORE THAN 66,000 bags that have been recycled and kept out of landfills** but more importantly, our friends and neighbors experiencing homelessness will have received a mat and been reminded that perfect strangers care very much about their well-being.

## A NOTE FROM OUR PARTNER

**It takes 500-600 plastic bags to make just ONE mat.**

This project has been so rewarding for so many of youth volunteer collecting and preparing plan AND has also offered our senior volunteers such a fun way to connect with other volunteer and make the mats together. Such blessing all around.

We are halfway now through 2023 and our goal of distributing 200 mats is looking promising but WE NEED YOUR HELP!!!

**We need plastics bags, volunteers to prepare plan and volunteers to crochet the mats. Any and all help is greatly appreciated.**

To learn how you can get involved, call 302-515-3020 or email [Bobbi.Tice@delaware.gov](mailto:Bobbi.Tice@delaware.gov)

**Please consider saving and donating your plastics to Bags2Mats.**

**Bags can be dropped off in New Castle or at the Newark Senior Center from 10am-12pm on the second and fourth Wednesday of the month during the regularly scheduled Bags2Mats plan workshops.**



## A NOTE FROM OUR PARTNER



**2023 Summer Schedule**  
Times: 11am-3pm

**1in7B Mobile Hygiene Unit**



Towels and shower supplies will be provided.



CBC: 215 E Delaware Ave, Newark | Christina: 100 N Church St. Wilm. | 2214 N Market St. Wilm.

**To learn how you can support or partner with 1in7B to provide even more services to our guests, visit [1in7bfoundation.org](http://1in7bfoundation.org).**

Those experiencing homelessness are amongst the most at risk for developing hygiene related illnesses. Daily hygiene habits that we most often don't give a second thought, play a critical role in not only keeping them clean but also preventing the spread of diseases from person to person. Many homeless individuals can go days, weeks, and even months without a shower, because they often cannot get basic hygiene supplies like soap and do not have access

to running water.

**1 in 7B Foundation** is its first of its kind in Delaware and they could not be more proud to bring this much needed basic human right to so many desperately in need. Volunteers are needed now more than ever to help with the

#### **1in7B Mobile Hygiene Unit.**

Volunteer roles may include distributing hygiene items, clothing, food and snacks, or simply being a friendly face for

guests to visit and talk to while they wait for a shower or for their belonging to washed/dried.

Events offer outdoor service opportunities so please dress accordingly.

To learn more or to register to volunteer, please contact Volunteer Delaware 50+ at [Guadalupe.Murphy@delaware.gov](mailto:Guadalupe.Murphy@delaware.gov) or visit

[www.1in7bfoundation.org](http://www.1in7bfoundation.org)



 **Forget Me Not Families**

## School Supplies Drive

**K-12 SUGGESTED ITEMS**

- backpacks
- water color paints
- colored pencils
- pencils
- glue sticks
- highlighters
- crayons
- erasers
- scissors

**BY: 8/19/23**

**Drop off: 132 Sandy Drive. Newark 19713**

Please join Forget Me Not Families in blessing some of our most vulnerable children in our communities.

Donations can be dropped off at our main Newark location. If after hours, please place in our shed.

For more information, please visit [ForgetMeNotFamiliesDE.com](http://ForgetMeNotFamiliesDE.com)

## A NOTE FROM OUR PARTNER

**WEDNESDAY, AUGUST 16, 2023**

# BACK 2 SCHOOL

**FREE BACKPACKS & SUPPLIES**


**FROM 4 PM to 7 PM**


**301 N. HARRISON ST. WILMINGTON, DE 19805**


**FUN ACTIVITIES**


- MOON BOUNCE
- ICE CREAM TRUCK
- POPCORN MACHINE
- FACE PAINTING
- INTERACTIVE GAMES


[www.thelatincenter.org](http://www.thelatincenter.org)


 **LATIN AMERICAN COMMUNITY CENTER**

 **NEMOURS CHILDREN'S HEALTH**

 **ConeXiones**

 **AmeriHealth Caritas Delaware**

 **Amgheleer**



**TRI-STATE BIRD RESCUE & RESEARCH**

# FEATHERED FRIENDS



September 17, 2023 Glasgow Park, Newark, Delaware

**SIGN UP TODAY!**





## A NOTE FROM OUR PARTNER

**INTERNATIONAL**  
**Food Festival**  
9 AM - 4 PM

**Holy Angels Church**

82 Possum Park Road, Newark DE 19711  
**Sunday August 13, 2023**

First come first  
served.

Follow Charity  
Crossing to learn of  
other community  
events.

CHARITY CROSSING  
**COMMUNITY**  
*giveaway*

**10:30 AM - 12:30 PM**



**A NOTE FROM OUR PARTNER**

Want to help a child in need? Come learn about how to be a CASA (Court Appointed Special Advocate) volunteer! During this Info Session, we will explain the role of the CASA, what to expect during your experience as a CASA and explain the ins and outs of child advocacy. Can't wait to see you!

# CALLING ALL CARING ADULTS!

Join our **Info Session** to learn more about becoming a  
Court Appointed Special Advocate (CASA) Volunteer



CHANGE A  
CHILD'S STORY....  
BECOME A  
CASA VOLUNTEER



**CASA**  
Court Appointed Special Advocates  
FOR CHILDREN

OFFICE OF THE CHILD ADVOCATE  
DELAWARE

Tuesday, August 15 · virtual  
12pm - 1pm

To register, visit [tinyurl.com/AugustCASAINfo](https://tinyurl.com/AugustCASAINfo)



American Cancer Society **MAKING STRIDES** AGAINST BREAST CANCER + *Rizzo* WINERY + Chronic a Space of Comedy

## Wine & Dine Comedy Nite

An American Cancer Society Fundraiser

Thursday, August 17, 2023  
5:30 pm - 7:30 pm  
Show begins at 6:15 pm  
Tickets: \$30

Tickets include: 1-hour Comedy Show, Pasta Dinner, & Dessert  
Cash Wine Bar | Raffle Prizes | American Cancer Society Info

**Rizzo Winery**  
13 Rizzo Ave, New Castle, DE 19720

- Ryan Foster -  


**Headliner**  
- Chanel Ali -  
From The CW's Great American Joke Off and MTV's Girl Code

  
Making Strides Delaware  
10.22.23  
Bellevue State Park

  
- Queen Stewart -  
Breast Cancer Survivor  
Founder-Create a Sense of Urgency, LLC

  
- Anant -

  
PURCHASE TICKETS!

text "comedynite" to 33100 for more info,  
or visit: [go.rallyup.com/comedynite](http://go.rallyup.com/comedynite)

## A NOTE FROM OUR PARTNER

Brandywine Valley SPCA  
FINDING THE HEART IN HUMANITY



# BE A HERO

for Homeless Pets

# VOLUNTEER

DOVER | GEORGETOWN | NEW CASTLE | WEST CHESTER

SIGN UP TODAY!  
[BVSPCA.ORG/VOLUNTEER](http://BVSPCA.ORG/VOLUNTEER)




## Colors of Hope 25 Years Strong

Relay For Life of Central &amp; Northern Delaware

September 22-23, 2023

6:00PM-6:00AM-Cancer doesn't sleep &amp; neither will we!

Connection Community Church

4744 Summit Bridge Rd, Middletown, DE

Join us for our 25th Anniversary!

Survivor Gifts &amp; Dinner Raffles Contests Music

Food Inflatable Games Luminaria Ceremony

CELEBRATE WITH THOSE IN REMISSION

REMEMBER THOSE WE HAVE LOST

FIGHT BACK WITH THOSE WHO ARE BATTLING

To register, purchase luminaria, make a donation or  
for information: [www.RelayForLife.org/Delaware](http://www.RelayForLife.org/Delaware)



RELAY FOR LIFE

Follow Us:

[www.facebook.com/relaydelaware](http://www.facebook.com/relaydelaware)MAKING STRIDES  
AGAINST BREAST CANCER®MAKING STRIDES AGAINST BREAST CANCER  
OF DELAWARE

Sunday, October 22nd, 2023

Bellevue State Park

800 Carr Road, Wilmington, DE 19809

Registration: 8:30 a.m. | Rolling Walk Start | Ends: 12:00 p.m.

WE ARE THE MOVEMENT. WE ARE THE HOPE. WE ARE THE FUTURE.

Join!  
us![www.MakingStridesWalk.org/Delaware](http://www.MakingStridesWalk.org/Delaware)



## A NOTE FROM OUR PARTNER

### Delaware Valley Chapter In-Person Support Groups



The Alzheimer's Association Delaware Valley Chapter is offering **IN-PERSON SUPPORT GROUPS** for caregivers in **Delaware**.

Registration is required. Register for an in-person support group by calling the Alzheimer's Association 24/7 Helpline at **800.272.3900** or visiting **alz.org/crf**. Specialized groups are indicated.

Call **800.272.3900** before attending as dates and times are subject to change.  
**800.272.3900**.

**MAY-JUNE-JULY-AUGUST 2023**

**SECOND TUESDAYS**  
1 to 2 p.m.

St. Phillips Lutheran Church  
5320 Limestone Road  
Wilmington, DE 19808

**SECOND THURSDAYS**  
6:30 to 7:30 p.m.

Unity Lutheran Church  
2101 Lancaster Avenue  
Wilmington, DE 19805

### Easterseals Annual Caregiver Conference

"Laughter is the Best Medicine"  
with Keynote Speaker Lon Keiffer

**August 23, 2023**

8:30am-2:30pm

In person at Embassy Suites in Newark,  
simulcast at the Milford Wellness Village  
& virtual option.

PACE Your LIFE will be offering **free** respite  
care during the conference in Milford.

Come and enjoy yourself and leave the  
caring up to the PACE Your LIFE staff.

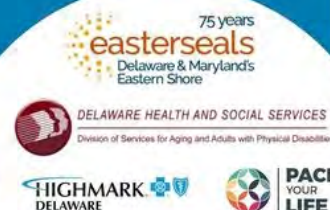
Sign up for respite when you register for the  
conference.

For More info, contact:  
[resources@esdel.org](mailto:resources@esdel.org)  
or 302-221-2087

**Click Here to Register**




Free Event Registration Required



**[Easterseals.com/caregiverconference](https://Easterseals.com/caregiverconference)**



PAWS for People's 15th Annual  
**WAG & Walkathon**

**NEW OPPORTUNITIES**

Partner reports  
hours

Newark Senior Center  
Volunteer Position Description

## RECEPTION DESK VOLUNTEER

**Purpose:**

- To make members and the public feel welcome by staffing the reception desk in a professional and cheery manner.

**Responsibilities:**

- Answer telephone in a pleasant, professional manner
- Register members for trips and activities.
- Provide information to members and the public about the Newark Senior Center offerings.
- Give tours of the Senior Center
- To properly record money and information for sign ups for all activities
- To provide information to people as they visit the reception desk and on the telephone.

**Time Required:**

- Monday through Friday
- 9:00 a.m. to 12:30 p.m. or 12:30 p.m. to 4:00 p.m.

**Qualifications:**

- Computer/Keyboard familiarity a plus.
- Customer service skills
- Phone skills
- Ability to handle money.

**Supervisor:**

- Maura Jongebreur, Volunteer Coordinator, (302) 737-2336 X101

**Benefits:**

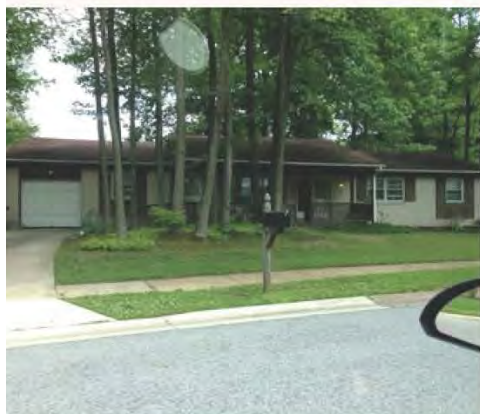
- Valuable work experience.
- Periodic volunteer appreciation events.
- Opportunity to meet many new people.
- Opportunity to be of service.

**For more information, please contact Volunteer Delaware 50+ at 302-255-9878 or email [Guadalupe.Murphy@delaware.gov](mailto:Guadalupe.Murphy@delaware.gov)**



## NEW OPPORTUNITIES

## Days of Caring, Group Volunteer Work with NAMI Delaware's Housing Program



### ABOUT:

Do you have a small group interested in giving an hour or two of your time to help with simple landscaping projects? NAMI Delaware's Housing Team would love to have you! There are a variety of locations and projects for volunteer teams to help with during the spring/summer and fall seasons.

### Tasks May Include

- Pruning
- Mulching
- Trimming trees and bushes
- Painting Decks/Porches
- Raking Leaves

### CONTACT US



**For more information, please contact  
Volunteer Delaware 50+  
at 302-255-9878 or email  
[Guadalupe.Murphy@delaware.gov](mailto:Guadalupe.Murphy@delaware.gov)**



## ONGOING OPPORTUNITIES

## Making Strides Volunteer Opportunities



**The Making Strides Against Breast Cancer Volunteer Committee:** The Volunteer Committee helps to lead and represent the innovative, diverse, and action-oriented community. They inspire positive change and care for those experiencing breast cancer through their leadership. Committee members will help to raise Breast Cancer awareness and work to connect to those in their network that can partner with or sponsor the Making Strides Against Breast Cancer event and movement.

- **Time Commitment:** 1 hour/month on our monthly meeting, plus an additional 2-4 hours/month spent on event-related tasks.
- **Benefits:** As a member, you get to participate in an exciting community event to raise awareness and funds to end breast cancer. You can choose to volunteer for the day-of the walk and Kickoff Party, in addition to using your skills to help plan & grow the event.
- **Main Focus Areas:** Event Experience and/or Making Connections
- **Meeting Location:** We meet virtually once a month! There are opportunities to be out in the community, such as by helping run our Kickoff Party, promoting Strides at community events, and at the walk itself.
- **Meeting Times:** one hour/month via Zoom, typically from 6:30 - 7:30 pm on a Tues, Wed, or Thurs evening.

### Making Strides Against Breast Cancer of Delaware Event Volunteers Needed:

Sunday, October 23, 2023 / Bellevue State Park (Wilmington, DE)

Day-of Event Volunteer Roles: [tinyurl.com/MSABC-Oct23](https://tinyurl.com/MSABC-Oct23)

## Relay for Life Volunteer Opportunities



**Event Website:** [www.RelayForLife.org/Delaware](https://www.RelayForLife.org/Delaware)

Event: Relay For Life of Central & Northern Delaware

Date: September 22-23, 2023 (Friday-Saturday)

Time: 6:00PM-6:00AM

Location: Connection Community Church, 4744 Summit Bridge Road, Middletown, DE 19709

Day of Event Volunteer Needs Sign Up: We are looking for day of event volunteers to help our event run smoothly. We will have trained committee members to ensure all volunteers are comfortable in their role. Please review the available slots below and click on the button to sign up.

Day-of event volunteer roles: [tinyurl.com/RFL-Sep22](https://tinyurl.com/RFL-Sep22)

**For more information, please contact Volunteer Delaware 50+ at 302-255-9878 or email [Guadalupe.Murphy@delaware.gov](mailto:Guadalupe.Murphy@delaware.gov)**



**ONGOING OPPORTUNITIES**

## Volunteers Needed for Domestic Violence Court Program

Do you want to help victims of domestic violence in your community? CHILD, Inc.'s Domestic Violence Advocacy Program (DVAP) is seeking volunteers to assist victims with protective orders, safety planning, and resource identification.

CHILD, Inc.'s Advocacy program is in need of volunteer advocates who wish to help victims of domestic violence within the civil court system. Since its start, DVAP has relied heavily on volunteers to offer services and support to victims of domestic violence through the court advocacy program which is located within Family Court in each county of the state of Delaware.

Advocates are available to offer support for victims experiencing intimate partner violence and abusive power and control. Volunteers assist clients with creating appropriate safety plans based on the client's needs and concerns at our offices located in the Family Courthouse building. Advocates aid victims in filing Protection from Abuse (PFA) petitions and offer information regarding court hearings.

All Volunteer Advocates are valued members of our DVAP team; they are what makes our program as successful as it has been for many years.



**Stop Domestic  
Violence**

**For more information, please contact Volunteer Delaware 50+ at 302-255-9878 or email [Guadalupe.Murphy@delaware.gov](mailto:Guadalupe.Murphy@delaware.gov)**



## ONGOING OPPORTUNITIES

American  
Red CrossSUMMER *Time Well Spent*

## Join Us and Volunteer!

This summer, turn your compassion into action when you volunteer with the American Red Cross. Communities across the country count on the Red Cross every day. The need remains critical and constant during the summer months. From helping people affected by disasters, like home fires and floods, to supporting the collection of lifesaving blood, you can make a difference. Ninety percent of our workforce are volunteers who are inspired to give back. We can't do it without you.

Find the volunteer role that's right for you and discover one of the best ways to spend your summer.



## Volunteers Urgently Needed for the Following Positions in Your Community:

**Red Cross Club Coordinator**

Supports area clubs in partnership with Red Cross staff and youth volunteer leads. Preferred commitment: 2-3 hours per week

**Disaster Action Team Member**

Assist individuals and families who have been impacted by a home fire or local other disaster. Preferred commitment: monthly on-call shift

**Blood Donor Ambassador**

Help Save lives in your community by supporting blood collection at a local blood drive. Preferred commitment: 1 shift (4-5 hour shifts) per month

*Discover the role that's right for you!*



Scan with cell phone  
camera to apply.

**For more information,  
please contact Volunteer Delaware 50+  
at 302-255-9878 or email  
[Guadalupe.Murphy@delaware.gov](mailto:Guadalupe.Murphy@delaware.gov)**

## ONGOING OPPORTUNITIES

HOW YOU CAN *Help* THE ANIMALS

Use your free time to provide comfort and care to our homeless, helpless, & healing shelter dogs and cats.



## DOG VOLUNTEER

- 🐾 Walk dogs
- 🐾 Help dogs become more adoptable with training & behavior modification
- 🐾 Assist at offsite adoption events
- 🐾 Participate in dog play groups
- 🐾 Jog with dogs
- 🐾 Counsel adopters
- 🐾 Help with daily cleaning & feeding
- 🐾 Help with daily enrichment



## CLINIC VOLUNTEER

- 🐾 Monitor animals in the surgery recovery room
- 🐾 Assemble surgical packs
- 🐾 Cut drapes

*High Need!*



## CAT VOLUNTEER

- 🐾 Socialize kittens & cats
- 🐾 Groom the adoptables
- 🐾 Take kittens to events
- 🐾 Counsel adopters
- 🐾 Help with daily cleaning & feeding
- 🐾 Help with daily enrichment



## FOSTER FAMILY

- 🐾 Care for & socialize young kittens or puppies until adoption age
- 🐾 Help an animal recover from a medical need
- 🐾 Provide socialization or training for an animal needing help to be more adoptable
- 🐾 **MORE INFO: [BVSPCA.org/foster](https://bvspca.org/foster)**

*High Need!*



## SUPPORT TEAM

- 👤 Answer phones
- 👤 Assemble adoption folders
- 👤 Help with office functions
- 👤 Assist with processing adoptions

[BVSPCA.ORG/VOLUNTEER](https://bvspca.org/volunteer)



## OTHER OPPORTUNITIES

- 👤 Donate professional photography services
- 👤 Write animal bios
- 👤 Assist in humane education (birthday parties, camp, school visits, etc.)
- 👤 Bring animals to communities in need through our SAFE Program
- 👤 Assist with Henry's Cupboard pet food pantry

*Fun for the Whole Family!*

Junior Volunteers (ages 8-12) can help with all of this too. Bring your little one along for the day to immerse them in all things shelter life.

For more information, please contact Volunteer Delaware 50+ at 302-255-9878 or email [Guadalupe.Murphy@delaware.gov](mailto:Guadalupe.Murphy@delaware.gov)





### Why Volunteer with Lutheran Community Services?

Lutheran Community Services (LCS) could not accomplish our mission without the help of our talented and **dedicated** volunteers!

We have multiple volunteer opportunities that are designed to align with an individual's diverse set of skills and talents. Want to have direct contact with client services? Great! Rather be behind the scenes support? Wonderful! Fall somewhere in between? We've got that too!

### VOLUNTEER OPPORTUNITIES (Wilmington)

#### Pantry Operations Volunteer

- Food Stocking & Sorting: Assist in our pantries by unloading pallets of food, re-stocking shelves, and filling bags of groceries for shoppers.
- Pantry Sign-In: Help to register and manage clients as they arrive at our pantries.
- Food Rescue Drivers: Assist in picking up weekly donations from various local partners and delivering food to our pantries.

### ONGOING OPPORTUNITIES



#### Delaware Food Farmacy Volunteer

- Drivers: Need back-up drivers for our van to deliver food to clients on Tuesdays and Wednesdays
- Packing: We need help packing customized food boxes on Mondays and possibly Tuesdays for delivery as we grow

#### Garden Volunteer

Help with the upkeep and harvesting of our community garden. Produce is given to clients through our food pantries

**For more information, please contact Volunteer Delaware 50+ at  
302-255-9878 or email  
[Guadalupe.Murphy@delaware.gov](mailto:Guadalupe.Murphy@delaware.gov)**





## ONGOING OPPORTUNITIES

**Spiritual Care Support Volunteer**

The Delaware Hospice @ Saint Francis Unit is looking for volunteer chaplains to join our team. For more information about our program, please contact Volunteer Coordinator, Rolonda Sutton-Greene at (302) 478-5707 or visit our website <https://www.delawarehospice.org/volunteer/>

**Our volunteer chaplains provide:**

- Spiritual support for patients and families
- An opportunity to pray and read with patients
- A calming presence and a safe space to talk

Our Mission: To keep people alive and safe, to help them through crises, and to connect them with relevant community resources.

Are you thinking about being a support person for someone you don't know? Then, look to volunteer with ContactLifeline and be a good listener for someone in need over the phone. The Crisis Helpline is located in Wilmington. Don't worry, you will be trained (in-person) to be a better listener for someone who needs you.

ContactLifeline crisis responder services are provided by professionally trained and supervised volunteers and professionals who respond anonymously and confidentially to human needs, state-wide, 24 hours a day.



**For more information, please contact Volunteer Delaware 50+ at 302-255-9878 or email [Guadalupe.Murphy@delaware.gov](mailto:Guadalupe.Murphy@delaware.gov)**

**ONGOING OPPORTUNITIES**

**Learn about PAWS pet therapy and how you can get involved on one of our free Zoom Sessions!**



**Can my pet be a pet-therapy companion?**

Would you describe your pet as: Sweet • People-Focused • Friendly  
Affectionate • Gentle • Comforting

**Can I share my pet with others?**

Do you have a few hours each month to volunteer?  
Would you like to work with children, elders, and adults with disabilities?  
Do you really want to give something back?

**Yes, you can! (And your pet can, too!)**

**For more information, contact Volunteer Delaware 50+ at  
302-255-9878 or [Guadalupe.Murphy@delaware.gov](mailto:Guadalupe.Murphy@delaware.gov)**



**2023 Summer Sessions**

**Thursday, August 17, 6:00 PM**



## ONGOING OPPORTUNITIES

accentCare™

## The Role of Hospice Volunteers

## Direct Patient Volunteers

When working with patients and families, the volunteers provide multiple services, including:

- Conversation and companionship
- Medication reminders, snack preparation, encouragement of fluids (if applicable)
- Life review and legacy projects
- Writing letters
- Engaging children in the home
- Walks with permission
- Listening to music and/ or reading books
- Painting their nails
- Sitting at bedside in silent support/presence, holding hands
- Companionship to provide the caregiver a break
- Organization and review of collections of photos, newspaper clippings, baseball cards, stamps, etc.
- Support at the time of death and during bereavement
- Specialty volunteers depending on availability (i.e. massage therapy, reiki, pet therapy)

## What Volunteers CAN do

- Remind someone to take medication
- Take patient for a walk if someone has already transferred the patient to the wheelchair
- Be an advocate for safety and pain issues
- Be an extra set of eyes and ears

## What Volunteers CANNOT do

- Give medications
- Transfer patients
- Accept payments or gifts, or sell anything to our patients
- Provide personal care, such as:
  - Personal hygiene and toileting
  - Dressing
  - Transferring from bed to chair, and back

For more information, please contact  
**Volunteer Delaware 50+**  
 at 302-255-9878 or email

**Guadalupe.Murphy@delaware.gov**



Help us  
 turn  
 plastic  
 bags  
 into  
**PLastic yARN (PLARN)**

**2023**  
**10-noon PLARN PARTY**

**BENEFITS BAGS2MATS FOR THE HOMELESS,  
 A VOLUNTEER DELAWARE 50+ INITIATIVE**

**Newark Senior Center**

200 Whitechapel Dr, Newark, 19713

2nd & 4th Wednesday of each month - Classroom 3



**f @Bags2MatsDE**



For more information about the  
 Bags2Mats for the Homeless  
 program, please visit us on  
 Facebook or call 302-255-9746  
 Guadalupe.Murphy@delaware.gov



## Senior Roll Call Lifeline

is a free program  
 provided by New Castle  
 County, Division of  
 Police, that makes daily  
 calls to the homes of

our elderly or disabled members to  
 ensure they are doing well and do not  
 require emergency assistance. If after  
 several attempts the calls are  
 unsuccessful, emergency help is sent to  
 the home to check on the well-being of  
 the member.

For more information call 302-255-9878.



## ONGOING OPPORTUNITIES

**looking to volunteer  
in a different capacity?  
why not join one of our family  
services committees ...**

### **family selection volunteer committee member (Virtual)**

**the purpose** choosing the families to own and occupy Habitat for Humanity is one of the most difficult and challenging aspects of this ministry. The Family Selection Committee is responsible for drafting the selection criteria used to select families for approval by the Board of Directors.

#### **responsibilities**

- attend orientation sessions (via zoom)
- interview prospective families
- recommend applicant to the board of directors for approval

**Self report  
hours**

#### **qualifications**

- communicate well with applicants, staff and other family selection committee members
- willing to make difficult decisions based on criteria
- must be willing to visit unfamiliar neighborhoods with other committee members (not applicable at this time)
- understand requirements for habitat homeownership- the process, credit reports, et.
- sensitivity to diverse groups of people, especially low-income earning people
- must be able to be objective and have excellent people skills as well as interview skills

#### **commitment**

- two-year commitment, 2- to- 4 hours per month depending on the number of applications received.



**For more information, please contact Volunteer Delaware 50+  
at 302-255-9878 or email [Guadalupe.Murphy@delaware.gov](mailto:Guadalupe.Murphy@delaware.gov)**



**ONGOING OPPORTUNITIES**

## **Urgent Need for CASA Volunteers**

The Court Appointed Special Advocate Program (CASA) of Delaware is expanding its efforts to advocate for abused and neglected children. The number of children entering foster care continues to increase daily. The CASA Delaware program needs additional 200 volunteers to help advocate for these vulnerable children, and to ensure each child has a CASA volunteer by their side.

Currently, CASA Delaware only represents 50% of the children in foster care. Research shows that children with a CASA volunteer to advocate for them are:

- Less likely to re-enter foster care.
- More likely to find a safe, permanent home, spending less time in foster care.
- More likely to perform better in school.

CASA volunteers are trained members of the community who are appointed by a Family Court Judge to be a voice for Delaware's abused and neglected children. CASAs have varied professional, educational, and ethnic backgrounds. They are selected based on their objectivity, competence, and commitment. Each volunteer accepted into the program must complete 30 hours of initial training. Each CASA volunteer is supported by a CASA Program Coordinator and a Child Attorney to advocate for the best interests of children.

*The problems of child abuse and neglect belong to all of us.  
Be part of the solution. Be a CASA volunteer.*

**Statewide CASA Training Classes are forming now!**

Scan the QR code to apply online.



CASA Delaware is a member of the National CASA/GAL Association for Children. To learn more about National CASA please visit <https://nationalcasagal.org/>.



**For more information, please contact Volunteer Delaware 50+ at 302-255-9878 or email [Guadalupe.Murphy@delaware.gov](mailto:Guadalupe.Murphy@delaware.gov)**

**ONGOING OPPORTUNITIES**

*Join us at our monthly get-togethers*



**3rd Friday of every Month  
10 - 11am**

**B'nai B'rith House  
8000 Society Dr.  
Claymont, DE 19703**

**For more information, call  
302-255-9746 or email  
[Guadalupe.Murphy@delaware.gov](mailto:Guadalupe.Murphy@delaware.gov)**





Looking to support a mission of safe and affordable housing for Delawareans, all while staying inside, out of the cold? Come out and volunteer with us at Habitat for Humanity's ReStores! Our ReStores are public donation centers that help families build, rehabilitate and repair homes in the New Castle County area. By giving your time and talents, you can help the Habitat ReStore do more to support homebuilding projects that benefit families in your community!

At the ReStores, we look to engage volunteers with a variety of opportunities, including refurbishing of donations, creating decorative displays, organizing the donation dock and sales floor, and interacting with customers. All efforts are led by a fantastic team of ReStore staff and your fellow volunteers! We offer shifts at our ReStores Tuesday-Saturday, between 10am and 5pm. Shifts are from 10-2, 12-5 or an all day shift, but we're also very flexible on when you can come in! We have 2 locations, Wilmington and Middletown.



## ONGOING OPPORTUNITIES

accentCare.

**Volunteer your time and compassion — and make a big difference**

**Become a Virtual Bereavement Volunteer today**

**The needs of bereaved families and friends are unique — and our Virtual Bereavement Volunteers are there to support them.**  
This special group of volunteers offer much-needed support to these lower-risk loved ones by making phone calls, often on the anniversaries of deaths, providing important moments of "virtual" connection.

As a Virtual Bereavement Volunteer, you may also co-facilitate virtual services of remembrance and take part in virtual grief support groups — all from the comfort of your home. All our volunteers are trained to assess the needs, responses, and support systems of the bereaved, and provide documentation to help our psychosocial team determine any needed follow up care.

## Volunteer with NAMI Delaware

**HELPLINE VOLUNTEERS & SUPPORT GROUP FACILITATORS NEEDED**

NAMI Delaware

**NO PREVIOUS EXPERIENCE NECESSARY**

Support Group facilitators must have lived experience as peers or family members.

For more information please visit:

[www.namidelaware.org/join](http://www.namidelaware.org/join)

### REQUIREMENTS

- Must be passionate about supporting those living with mental illness and their families
- Able to listen to potentially difficult stories with empathy and compassion

## ONGOING OPPORTUNITIES

Partner reports  
hours



## OPEN VOLUNTEER ROLES!!!

**Donor Care and Staff Support (age 18+):**

Want to be on the donation floor? Interact with donors and staff? Make the donation process better for both donor and staff? In this role you restock supplies staff need for donation process, hand out items donors need, and interact with donors so they feel seen and have someone there supporting them. Schedule sign up first come first serve after completion of application and training.

**Community Outreach Ambassador (age 18+):**

Enjoy people? Want to interact and share what BBD does with people in the community? You'll attend community events with information and training provided to share the needs and mission of BBD! Fun way to be with people and help BBD in saving lives. Training online and in person. Scheduled in advance variable upon community event dates.

**Donor Refreshment/Canteen Center and/or Mobile (age 18+):**

Enjoy people and staying active? Care for donors post-donation, chat with donors, serve snacks and drinks, and help donor feel cared for and appreciated. Active role, interact with people, restock, and sanitize tables. Training online and in person. Center schedules set and sign up with lead volunteer guidance, mobile drive schedules posted a month in advance first come first serve.

**Greeter (age 15+):**

Say hello to donors on way in, and thank on their way out of the blood center. Sanitize tablets, laminated reading material, and chairs, counter, etc. in registration area. Interact with donors, staff, and

volunteers. Schedule sign up first come first serve after completion of application and training.

**Fundraising (age 18+):**

Have experience in fundraising, enjoy data input, thank you letter preparation, or anything related to raising funds? We look forward to hearing what skills and experience you have to share!

**Office Admin, Phone, and Related tasks (age 15+):**

Are you an indoor office organizing type person? BBD has different types of roles: data entry, phone calls, letter mailing preparation, copying, scanning, shredding, and variety of other office computer related tasks. Let us know your skill set and experience!

**Photo and/or Video (age 15+):**

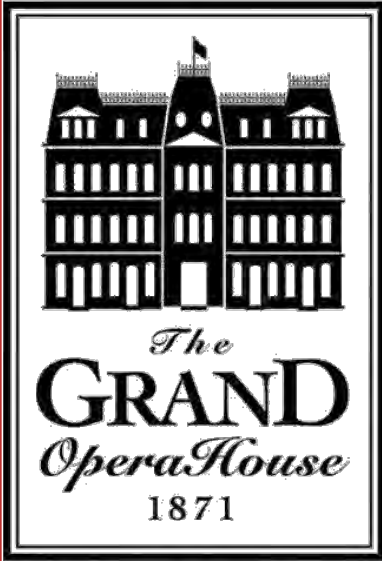
Love to be behind the lens? Enjoy taking photos or shooting video? Maybe editing video? Creating short videos? Let us know what you love to do in this area.

**For more information, please  
contact Volunteer Delaware 50+  
at 302-255-9878 or email  
[Guadalupe.Murphy@delaware.gov](mailto:Guadalupe.Murphy@delaware.gov)**





## ONGOING OPPORTUNITIES



## SHOW CORPS VOLUNTEERS

The Grand Show Corps currently has over 200 volunteers, and we continue to grow thanks to people like you!

The Grand Opera House is a multi-level theater that presents world-renowned artists and a wide variety of entertainment. The baby grand is home of live at the baby grand as well as various community groups. The Playhouse on Rodney Square is home of Delaware's Broadway Experience.

The majority of our shows are scheduled in the evenings with some weekend afternoons. We also have occasional student performances during weekday mornings and afternoons.

Each member of the Show Corps is assigned to a squad and each squad is assigned to a show. Squad responsibilities include ticket-taking, ushering, coat-check, **bartending**, and patron safety. On average, each squad is scheduled three to five times a month. Those who are unable to volunteer during the weekdays due to full-time employment will not be asked to do so. Every volunteer is required to work all 3 theaters based on assignment.

For more information on how you can become a volunteer with the Grand Opera House, please contact Volunteer Delaware 50+ at 302-255-9878 or email [Guadalupe.Murphy@delaware.gov](mailto:Guadalupe.Murphy@delaware.gov)



## Meet diverse people and have fun while engaging in cross cultural activities in Delaware!



Promoting Peace through Understanding by fostering cross-cultural exchange and experiences.

[info@ptpde.org](mailto:info@ptpde.org)

Bring your computer skills and volunteer from home to make an impact in our community on one of our many exciting committees.

### Public Relations Committee

Create fliers and social posts, assist with mailing list and announcements

Skills: Canva and Mail Chimp

### Program Committee

Brainstorm ideas for virtual and in person exchange programs, support tech in online meetings

Skills: Zoom

### Fundraising Committee

Assist grant research & writing, foster philanthropic relations

Skills: Word, Excel, Google Docs/Sheets

### Membership Committee

Increase public awareness, encourage partnerships, new membership and volunteers

Skills: Excel/Google Sheets



**Weekly  
drive-thru food  
distribution,  
every Friday  
10am-3pm.**

**Dream Center  
310 Ruthar Dr.  
Newark 19711**

**302-286-7406.**

## RESOURCES

# FOOD DISTRIBUTION



## DISTRIBUCION DE COMIDA

**THE JOURNEY  
MONTHLY DISTRIBUTION  
721 E. CHESTNUT HILL RD.  
NEWARK DE 19713**

**August  
12  
10AM - NOON**

**SECOND SATURDAY OF EACH MONTH**

**YOURJOURNEY.TV/CODE-RED**

## Delaware Aging & Disability Resource Center

The Delaware ADRC is your one-stop access point for information, assistance, and referral to resources that support older Delawareans, adults with disabilities, and caregivers.

### CONTACT DELAWARE ADRC

Phone: 1-800-223-9074 (toll-free)

Email: [DelawareADRC@delaware.gov](mailto:DelawareADRC@delaware.gov)

## REPORT HARM OF VULNERABLE ADULTS

**NEGLECT • ABUSE • EXPLOITATION**

**888-APS-4302**



Delaware Adult Protective Services



**"In 2021, anonymous reports helped protect 2,184 vulnerable adults from potential abuse; new hotline makes reporting neglect, abuse and exploitation easy and confidential."**

With one simple phone call, concerned individuals and those experiencing harm can connect with free, voluntary services and resources that could save a life.

For more information about Adult Protective Services, including how to file a report, types of harm, and the resources and services available, visit [dhss.delaware.gov/dsaapd/aps](https://dhss.delaware.gov/dsaapd/aps).