

**COMMUNITY VOLUNTEER OPPORTUNITIES & EVENTS**

**For More Information  
Call 302-515-3020**

<https://volunteer.delaware.gov-delaware50>

# VOLUNTEER DELAWARE 50+

*Sussex County*

Volunteer Delaware 50+ is a statewide program offered through the State Office of Volunteerism within the Department of Health and Social Services. The mission is to engage persons 50 and older in volunteer service, to meet critical community needs and to provide a high quality experience that will enrich the lives of volunteers.



Important November Dates	
Nov. 3	- Daylight savings time ends.
Nov. 4	- Diwali (Hindu holiday) last day.
Nov. 5	- VOTE—ELECTION DAY
Nov. 6	- National Stress Awareness Day.
Nov. 11	- Veteran’s Day. 
Nov. 20	- Family Volunteer Day.
Nov. 26	- Giving Tuesday
Nov. 28	- Thanksgiving 
Nov. 29	- Black Friday



**Spotlight:**  
**Page: 2**  
**Volunteer Opportunities:**  
**Pages 3-12**  
**Community Events:**  
**Pages 12-17**  
**Community Partners:**  
**Page: 18**

Have you run out of fun and different ways to volunteer and it’s only November? The holiday season can introduce you to some innovative ways to shake your volunteer routine to a new level! Let us remind you that Family Volunteer Day is this month. Do you have family visiting this month. What can you do that’s fun and will build a lasting bond. Family Volunteer Day is a global day of service that takes place annually on the Saturday before Thanksgiving, this year that day is November 20. It’s a day to celebrate the power of families working to make a positive impact on their communities. You don’t have to do a huge project, but here are some great ways to volunteer:

- Cleaning up a local park
- Helping at a food bank, or a shelter
- Volunteering at a Thrift Store
- Making and delivering a meal to a neighbor
- Driving a neighbor in need to the grocery store or an appointment

Any or all of the above makes a small difference to someone. Remember, we don’t have to do it all, we have to do our little bit. Bringing together our family helps us bond in the spirit of service. It forms the bond of caring for our community as a whole. In this season of Thanksgiving, the Volunteer Delaware 50+ staff thanks volunteers throughout the State of Delaware for strengthening communities with kindness.

*Pass it on — Ann Gorrin*



# New Community Partner



**SHOES THAT FIT**  
 Every child deserves them®  
**DELAWARE CHAPTER**



### Our Mission:

Shoes That Fit tackles one of the most visible signs of poverty in America by giving children in need new athletic shoes to attend school with dignity and joy, prepared to

**learn. play. thrive.**

The following percentages of educators report improvement in these areas after kids receive new shoes:

**89%**  
 confidence

**58%**  
 physical activity

**88%**  
 self-esteem

**66%**  
 social interaction

as well as improvements in academic performance, attendance, attitude and behavior.

**There are 500 homeless students in Sussex County and 800 homeless students in Kent County.**

**YOU CAN HELP US MAKE A DIFFERENCE IN THEIR LIVES!!!**

#### VOLUNTEER NEEDS

- Grant researchers and writers to help us find funding to purchase sneakers
- Running a sock drive- we need no show and low-rise socks for males and females ages 5-18
- Sussex Contacts for Shoes That Fit- Be the go-to person in Sussex to help with delivery/ donations, and to establish the first shoe bank for students in Sussex. We need someone with passion to help us take Shoes That Fit to the next level in Sussex!

#### DONATIONS

- Give any time through DE Gives: >>[Click Here to Donate or Share with Friends and Family](#)<<
- **United Way Donations:** Write us in for your donation as follows: Shoes That Fit, 1420 N. Claremont Blvd, Suite 204-A Claremont, CA 91711 #5901
- Send a check to: Shoes That Fit 4 West Periwinkle Lane, Newark, DE 19711

### WHAT IS UNIQUE ABOUT OUR SERVICES?

<b>For the students and families</b>	<ul style="list-style-type: none"> <li>• <b>New brand name sneakers &amp; socks</b></li> <li>• <b>Convenient &amp; Discreet</b> – through the student’s school resources that already are engaged with these children/families</li> </ul>
<b>For the schools</b>	<ul style="list-style-type: none"> <li>• <b>Collaborative partnership</b> with district homeless advocates &amp; school family crisis therapists to support shoe requests</li> <li>• <b>Fill gap</b> in shoe resourcing</li> <li>• <b>Deliver</b> to point of service</li> </ul>
<b>For supporters</b>	<ul style="list-style-type: none"> <li>• <b>100% of funds goes to purchase</b> of sneakers &amp; socks</li> <li>• <b>Maximizes funding impact</b> by sourcing brand name sneakers at a discount</li> </ul>

For more information contact Bobbi Jo Tice at 302-515-3024



# Stockings for Soldiers

## COLLECTION DAY

NOVEMBER 13, 2024

9:30 AM—1:30 PM

### Adams State Service Center

544 South Bedford Street Georgetown, DE 19947

**Drop off your donations for Stockings for Soldiers!**

#### Stockings for Soldiers Suggested Donation Items

*“Bolted” items are most in demand*

(No aerosol cans or bars of soap No Hand sanitizer please)

- Small Individually Packages Meals
  - Tuna/Lasagna/Beef-A-Roni  
*Smaller package (8 oz or less) preferred*
- Crew Socks are **NOT** needed due to HUGE Donation from **BOMBAS**
- Mole Skin
- Slim Jims /Beef Jerky
- Toothbrushes & Small Toothpastes
- Small Candy, **chocolate is great.**
  - Mini-candy bars (send your favorite)
  - Christmas/Halloween candy
- Granola/Fruit/Breakfast Bars
- Cookies/Nuts/Pretzels/Trail Mix
  - Less than 12 oz. size
- Flavored Drink Mixes (*Single packets*)
  - Lemonade, teas, **hot cocoa, coffee**
- Paperback Books (No romance novels)
- Letters of appreciation from children
- Ramen Noodle Soup -in Bricks only (*No Cup of Noodles*)
- Fruit Snacks
- Chewing Gum
- Lip Balm
- Razors
- Toiletries & Lotions (*small packages*)
- Baby Wipes, **Foot Powder**, Sun Block
- DVD Movies & Music CDs
- Pocket Games & Puzzles & Pens
- Fly Swatters
- Crossword, Sudoku puzzles
- Beanie Babies
- **Snowman Soup**

Contact our office, Volunteer Delaware 50+ at 302-515-3020 for information



DELAWARE HEALTH AND SOCIAL SERVICES  
Division of Social Services  
State Office of Volunteerism



Volunteer Delaware 50+ Staff would like to thank the Volunteer Delaware 50+ Advisory Council and Long Neck Giant for a successful food drive. Special thank you to GFWC Women's Club of Indian River for volunteering to support the drive.



Left to right: GFWC Volunteer Cathy Nowick, Volunteer Delaware 50+ Advisory Committee Member Al Liebeskind, GFWC Volunteer Angie Simone, Bill Frank, Giant Long Neck Store Manager, GFWC Volunteer Linda Johnson, Volunteer Terry Clark, Volunteer Delaware 50+ Advisory Council

This drive collected over 900 items which were donated to State Service Centers in Sussex County: Pyle, Adams, Milford, Bridgeville, Shipley, and Laurel.



# LET'S READ AGAIN!



Read Aloud Delaware's need for volunteer readers willing to read in the Georgetown, Lincoln, Frankford, Bridgeville, Seaford or Laurel areas of Sussex County?



For more information about Read Aloud Delaware Sussex County contact Bobbi Jo Tice 302-515-3024 or email Bobbi.Tice@delaware.gov



## Join Us and Volunteer!

This fall please help us spread the word about our Fall into Service Recruitment Initiative. Communities across the country count on the Red Cross every day. The need remains critical and constant during the fall season. From helping people effected by disasters, like home fires and floods, to supporting the collection of lifesaving blood, volunteers can make a difference. Ninety percent of our workforce are volunteers who are inspired to give back. You can be a part of this effort by helping us spread the word to your employees, members, volunteers.



### Volunteers Urgently Needed for the Following Positions in Your Community:

Disaster Action Team	Disaster Health Services Team	Disaster Deployment Volunteer
<p>Help comfort and support people in your community by meeting any immediate needs such as food, shelter, clothing or supplies and connecting them to long term recovery services. We supply all the training you need.</p> <p>Mus que cor a iciliae et elest dellaudae cum harci od earciatur, officidusdae des desti cupta et alit laborest, ipicidebit aoea delis simin.</p> <p>Preferred Commitment: 4 shifts per month, 4-6 hours shifts</p>	<p>Use your professional skills as a licensed healthcare provider to deliver hands on care and education to shelter residents. Free online training will be provided and can count towards nursing continuing education units.</p> <p>Mus que cor a iciliae et elest dellaudae cum harci od desti cupta et alit laborest, ipicidebit aoea delis simin.</p> <p>Preferred Commitment: multiple local shifts of 4-12 hours each.</p>	<p>Support the day-to-day activities within a shelter which may include working in reception, registration, feeding, dormitory, information, or other areas within a shelter.</p> <p>Mus que cor a iciliae et ipicidebit aoea delis simin.</p> <p>Preferred Commitment: multiple local shifts of 4-12 hours each. For those able to travel outside of their local area, a commitment of at least 14 consecutive days, working 8- or 12-hour shifts is required</p>

Discover the role that's right for you!



Scan with cell phone camera to apply.

[redcross.org/volunteertoday](https://redcross.org/volunteertoday)

Sheleasa Omogbai / Volunteer Recruitment Specialist  
 Sheleasa.omogbai@redcross.org (410) 726-5272

## CALLING ALL VOLUNTEERS



### JOIN US!

NOVEMBER 2, 2024  
 7:00 a.m. - 5:00 p.m.

Various roles & shifts available  
 St. Andrews School, Middletown



Register using QR code,  
 or info@sode.org, 302.831.4653  
[www.sode.org](http://www.sode.org)

**VOLUNTEER DELAWARE 50+ ADVISORY COUNCIL**

**JOIN US**

We are looking for a few good volunteers/and or community partners to help our Advisory Council grow.

**Advisory Roles and Responsibilities**

- Meet 6 times per year 12:00PM-2:00PM (centrally located)
- All members shall strive to exhibit personal, moral and ethical standards which reflect highly on Volunteer Delaware 50+ programs.
- Assist with fundraising and in-kind resources.
- Provide information and advice concerning strategies to effectively use volunteers.
- Offer advice and support coordination of community partner programs.
- Promote constructive relationships with key community individuals and agencies.
- Help plan, implement, and participate in volunteer recognition events.
- Provide ideas and/or contacts for developing new community partners or programs.
- Provide ideas and/or contacts for recruiting prospective hard-to-reach volunteers.

Contact Danielle Briggs at 302-515-3020



One of the greatest gifts you can give is your time.

Volunteers Urgently Needed for the Following Positions in Your Community:

- |   |   |   |
|---|---|---|
| <p><b>Disaster Deployment Volunteer:</b> Support the day-to-day activities within a shelter.</p> <p>For those able to travel outside of their local area, a commitment of at least 14 consecutive days.</p> | <p><b>Blood Donor Ambassador:</b> Help Save lives in your community by supporting blood collection at a local blood drive.</p> <p>Preferred commitment: 1 shift (4-5 hour shift) per month.</p> | <p><b>Disaster Action Team Specialist:</b> Assist individuals and families who have been impacted by a home fire or local other disaster.</p> <p>Preferred commitment: monthly on-call shift.</p> |
|---|---|---|

To learn more:  
 Sheleasa Omogbai/Volunteer Recruitment Specialist  
 (410) 726-5272  
 Sheleasa.Omogbai@redcross.org



Scan with cell phone camera to apply.

Cape Henlopen Senior Center is seeking a

**SPANISH TEACHER**

1st, 2nd and 3rd Fridays  
 Classes are from 10:30 to Noon

11 CHRISTIAN ST,  
 REHOBOTH BEACH,  
 DE 19971

For more information call Bobbi Jo Tice 302-515-3024 or  
 email: Bobbi.Tice@delaware.gov

**ATLANTIC SHORES REHABILITATION AND HEALTHCARE CENTER**  
 Millsboro, DE

**RESIDENT STORE**

**VOLUNTEERS NEEDED**

<p><b>Store Hours</b></p> <p>Monday &amp; Friday              9:00 a.m to 11:00 a.m.              &amp;              2:00 p.m. to 4 p.m.</p>	<p><b>Volunteer will need to set up and break down store (3) 8ft tables</b></p>
<p><b>Background and TB test required. TB test can be done onsite.</b></p>	

PLEASE CONTACT DANIELLE BRIGGS AT 302-515-3020 IF INTERSTED IN VOLUNTEERING.

**Volunteers for the Village**

We need you to enlist new volunteers. Talk to your friends, family, neighbors ... anyone. Tell them about that heart-warming feeling you get helping Village members.

Here are some of the ways volunteers help:

1. Provide member services (See complete list at the end of this and every issue)
2. Office volunteer: Answering phones and scheduling services
3. Support and mentor new volunteers
4. Plan social and educational programs
5. Club leaders and helpers (book club, mahjongg club, bridge club, etc.)
6. Community outreach
7. Neighborhood/HOA representative
8. Writers (articles, spotlights, interviews)
9. Graphic designer
10. Videographers
11. Photographers
12. Webmaster



Contact Danielle Briggs for more

Information

302-515-3029



**Village Member Services (max. 2 hrs. per service)**

<b>Transportation</b> <ul style="list-style-type: none"> <li>• Medical Appointments</li> <li>• Vet Appointments (with member)</li> <li>• Social or Cultural Events</li> <li>• Hairdresser/Barber</li> <li>• Grocery Shopping</li> <li>• Errands</li> <li>• Special after hours (case by case)</li> </ul>	<b>Friendly Visits</b> <ul style="list-style-type: none"> <li>• Provide conversation and companionship</li> <li>• Respite for a family caregiver</li> <li>• Do a puzzle or play a game</li> <li>• Visit to share stories, photos, memories</li> <li>• Take a walk in the neighborhood</li> </ul>
<b>Household</b> <ul style="list-style-type: none"> <li>• Household organization</li> <li>• Assist with accounts</li> <li>• Balance checkbooks</li> <li>• Label/organize food</li> <li>• Care for house plants</li> <li>• Occasional pet care</li> </ul>	<b>Telephone Check-in</b> <ul style="list-style-type: none"> <li>• Friendly conversation</li> <li>• Inquire as to well-being</li> <li>• Inquire as to needs</li> </ul>
<b>Technical Assistance</b> <ul style="list-style-type: none"> <li>• Program cell phone</li> <li>• Set up email</li> <li>• Perform simple computer tasks</li> <li>• Assist with electronics</li> <li>• Program thermostats, TVs, remotes</li> </ul>	<b>Run Errands</b> <ul style="list-style-type: none"> <li>• Grocery Shopping</li> <li>• Other Shopping</li> <li>• Pick up prescriptions</li> </ul>
<b>Handyperson</b> <ul style="list-style-type: none"> <li>• Change light bulbs</li> <li>• Check smoke alarms</li> <li>• Install screens and/or storm windows</li> <li>• Hang pictures</li> <li>• Move outdoor furniture</li> <li>• Simple repairs</li> </ul>	

The Village is looking for Volunteers. Tell your friends, family, neighbors about that great feeling you get when doing Village services.

**Village Vendor Services**

- Accounting
- Computer Tech/Set-up
- Electric
- Gardening/Landscaping
- Gutter Cleaning
- Handyperson Jobs
- Heating & Air Conditioning
- Home Modifications
- Home Repairs
- Home Safety Assessments
- House Cleaning
- Occupational Therapy
- Personal Emergency Response System
- Personal Care Assistance
- Pet Sitting
- Physical Therapy
- Plumbing

accentCare.

Use your compassion and talents to make a **DIFFERENCE!**

Become a **Vet-to-Vet Volunteer!**

AccentCare® is a proud member of the We Honor Veterans program, a national initiative to recognize the unique needs of veterans and their families. The U.S. has around 18 million vets, and currently 1 in 4 dying patients is a vet. No one speaks the language or has that immediate connection better than fellow veterans or active-duty military personnel.

Vet-to-Vet volunteers receive specialized training and provide companionship, compassionate listening, and participate in Veteran pinning ceremonies. Vet-to-Vet volunteers have sympathetic insight and may be able to provide stress relief for patients and their caregivers. Volunteers may support patients' emotional and/or spiritual healing through sharing a common language, a cultural bond, and code of conduct.

Please share your time with our patients and help us honor the sacrifice they made for this country and our freedom.

For more information contact

Danielle Briggs at

302-515-3029

[www.accentcare.com/volunteer](http://www.accentcare.com/volunteer)

AccentCare welcomes all persons in need of its services and does not discriminate on the basis of age, ability, race, color, national origin, ancestry, religion, gender, gender identity and/or gender expression, sexual orientation, or source of payment. © 2022 AccentCare, Inc. All rights reserved.



**40** TH ANNIVERSARY  
DELAWARE  
HOSPICE

Apply Today!

**Seamstress and Crafter  
Volunteers Needed**



Delaware Hospice is looking for crafty volunteers who would like to share their skills with our patients and families.

**A One-of-a-Kind Memory of  
Your One-of-a-Kind Loved One**

Memory Bears are crafted at no charge for families of patients in one of our Delaware Hospice programs. Bear patterns and supplies are provided for all orders and made possible through program donations.



Twiddle Muffs are knitted and crocheted muffs which help to alleviate agitation and restlessness in patients with Alzheimer's disease and Dementia. Patients and families benefit from the calming sensory objects.

Contact Danielle Briggs for more

information

302-515-3029

**Will You Provide Comfort and Care  
to the Most Vulnerable?**

Join us! Our hospice volunteers become part of our team, building careers and lifelong friendships.

VITAS® Healthcare volunteers add to hospice patients' quality of life during their remaining months, weeks, and days. By providing companionship, volunteers ensure patients and their loved ones, have the support they need. As a VITAS volunteer, you'll receive comprehensive training to better assist patients and families. You'll become part of our professional team of doctors, nurses, aides, chaplains, and social workers—and forge alliances that you'll carry with you, possibly for life.

**Areas Served:**

Our patients are all over Sussex County, (Lewes, Rehoboth, Bethany, Millville, Georgetown, Laurel, Seaford, Millsboro)

For more information contact

Danielle Briggs at

302-515-3029

VITAS  
Healthcare

VITAS.com/Volunteer  
Since 1980



Scan the QR code to learn more.

During the COVID-19 pandemic, Delaware Hospice is taking every precaution to keep our volunteers, staff, patients, and families safe. PPE will be provided free of charge upon request.

# VOLUNTEER VIDEOGRAPHER

Location: Milford, DE

Commitment: Temporary / Project-based (Estimated 3-6 months)



Milford Advocacy  
for the Homeless

## Organization Overview:

MAH is dedicated to empowering the Delaware community through advocacy, care, housing support, food security initiatives, and essential service programs. We aim to uplift those experiencing homelessness, poverty, and food insecurity by providing vital resources, from nutritious meals to housing assistance, seasonal events, and in-kind donations.

## Role Summary:

We are seeking a passionate and creative Volunteer Videographer to join us for a limited-time project. You will help craft a series of branded videos to showcase our programs, community impact, and the stories of those we serve. These videos will be used for outreach, donor engagement, social media, and community awareness campaigns.

## Responsibilities:

- Collaborate with the leadership team to plan and execute a video series that highlights the organization's key programs and services, including:
- Film and edit compelling video content that captures the essence of our mission and the stories of those we support.
- Interview program beneficiaries, volunteers, and team members to authentically convey the impact of our work.
- Ensure all video content is consistent with the organization's branding and messaging.
- Use creative visuals and storytelling techniques to engage potential donors, volunteers, and the wider community.
- Collaborate on distribution strategies for social media, website, and outreach channels.
- Manage equipment and post-production editing to ensure timely delivery of video content.

## Qualifications:

- Experience in videography, video editing, and storytelling.
- Proficiency in video editing software (e.g., Adobe Premiere, Final Cut Pro, etc.).
- Creative eye for framing, composition, and visual storytelling.
- Excellent communication skills and ability to work collaboratively.
- Strong organizational skills and the ability to manage a project from start to finish.
- Passion for non-profit work and making a positive impact in the community.

## Benefits:

- Opportunity to support a meaningful cause by helping tell the stories of those in need.
- Portfolio-building experience with branded content creation for a respected local non-profit.
- Networking opportunities with community leaders and fellow volunteers.
- Flexibility in scheduling based on project timeline.

## How to Apply:

Please submit your portfolio, resume, and a brief statement on why you'd like to volunteer with our organization to [martha@milfordadvocacyforthehomeless.org](mailto:martha@milfordadvocacyforthehomeless.org). We're excited to hear how you can contribute to sharing our story!



# Play Hooky With Us!

Our dogs would love to spend time out of their kennels with you! Volunteer to take an adoptable dog for a fun outing such as a hike, a coffee date, or a meal at a pet-friendly location. Field trips can last from an hour to all day. Whatever works for you, works for us!

## Want to give a shelter dog a skip day?

- Participants can stop by a participating campus nearest you to choose a dog to sign out for an hour, an afternoon, or the whole day.
- West Chester, New Castle, Dover, and Georgetown Campuses, as well as the Animal Rescue Center, are all open to Shelter Skip Day participation.
- Shelter Skip Days are available to members of the public Tuesday - Sunday.

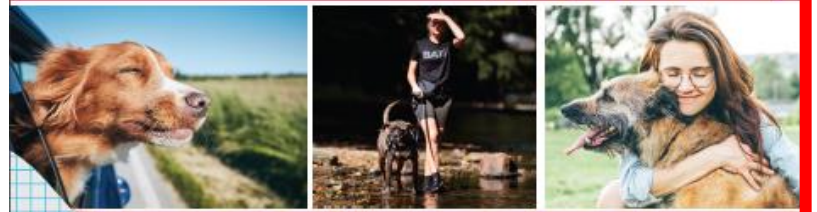


## Play Hooky With Us!

Our dogs would love to spend time out of their kennels with you! Volunteer to take an adoptable dog out for a fun outing such as a hike, a coffee date, or a meal at a pet friendly location. Field trips can last from an hour to all day. Whatever works for you, works for us!



Scan for more info!



### What is a CASA?

A CASA (Court Appointed Special Advocate) is a specially trained volunteer appointed by a Family Court Judge to advocate for the best interest of a child experiencing foster care.

### What do CASAs do?

- Advocate for children experiencing foster care due to abuse and neglect.
- Establish strong, stable connections with their assigned youth.
- Advocate to ensure the child receives needed essential services.
- Attend meetings and gather information from parties involved in the child's life.
- Work with the Child Attorney and CASA Coordinator to make recommendations in court for what's best for the child.
- Remains involved in the case until the child is reunified with their family or when that is not possible, works to find a safe and permanent home.
- Meet with the child face-to-face at least once a month.
- Attend all court hearings to testify to their findings and recommendations as the child's advocate.

**Interested in Volunteering? Please call our office at**

**302-515-3020 so we can connect you with CASA.**

accentCare.

## Become a Loyal Friends Pet Team Hospice Volunteer!

**Loyal Friends Pet Team volunteers share their dog's unconditional love with patients and families who could benefit from some animal companionship.**

Pets and their handlers must be certified by Pet Partners or Therapy Dogs International and are required to be up-to-date on vaccinations. After (human) volunteers have completed orientation and training as a Direct Patient Care Volunteer and pets have a behavioral assessment by the Volunteer Department, they can make visits to patients at home, nursing facilities and our inpatient centers. Hours are flexible, depending on your schedule. For more information about the pet certification process, check out [www.accentcare.com/volunteer/akc](http://www.accentcare.com/volunteer/akc)

For more information contact

Danielle Briggs at  
302-515-3029



AccentCare welcomes all persons in need of its services and does not discriminate on the basis of age, disability, race, color, national origin, ancestry, religion, gender, gender identity and/or gender expression, sexual orientation, or source of payment.

© 2022 AccentCare, Inc. All rights reserved.

[www.accentcare.com](http://www.accentcare.com)



# Veteran Volunteers Needed

Are you a Veteran with a compassionate heart, a willingness to listen, and a desire to make a difference? We are looking for **Vet-to-Vet Volunteers** to support fellow Veteran patients across Delaware.

- ✔ No prior volunteer experience necessary. All volunteers will receive comprehensive training and ongoing support.
- ✔ Visit with patients and talk about their military experiences.
- ✔ Offer emotional support, companionship, and practical assistance to patients.
- ✔ Attend patient bedside ceremonies.

**Make a Difference in a Fellow Veteran's Life. Contact Us Today!**

Contact Danielle Briggs at 302-515-3029



Delaware Hospice is a proud We Honor Veterans Level Four Partner.

accentCare.



## Volunteer with AccentCare® Hospice

Do you play an instrument or sing? AccentCare is looking for **volunteer musician companions.**



AccentCare has developed several specialty roles, which allow volunteers to utilize their own strengths and interests. This offers a meaningful and rewarding volunteer experience, and enhances the quality of life for our patients and their families.



Use your **compassion** and talents to **make a difference.**



For more information, please scan the QR code or contact our volunteer services coordinator at: [rebekahwelch@accentcare.com](mailto:rebekahwelch@accentcare.com) or 302.533.3800

[accentcare.com/volunteer](http://accentcare.com/volunteer)

AccentCare welcomes all persons in need of its services and does not discriminate on the basis of race, disability, sex, color, religion, age, ancestry, national origin, marital status, gender identity and/or gender expression, sexual orientation, or source of payment. © 2024 AccentCare, Inc.

Maryland's Most Compassionate Volunteer Type of

### Volunteer Opportunities EVENT COMMITTEE VOLUNTEER



#### Look Who's Cooking

Members of this Committee will be finding volunteer chefs to prepare food to share at the event as well as ensure we have community support in the form of sponsorship and attendance.

#### Annual Golf Outing

Annual Golf Outing Volunteer helps plan the outing from start to finish. We have the date and location-but everything else is open to have fun with. Sponsors, games, prizes, and food etc.



#### Baskets

Do you have a talent for gathering donations to put together for baskets to be auctioned off or for a drawing? We are looking for people to solicit donations from businesses so we can then put together baskets for silent auctions and tricky trays



For more information contact Bobbi Jo Tice at 302-515-3020 or email [Bobbi.Tice@delaware.gov](mailto:Bobbi.Tice@delaware.gov)



## VOLUNTEERS NEEDED

Volunteers are needed to help in the Food Bank of Delaware's new Healthy Pantry Center and 3.5-acre garden in Milford! A variety of shifts are available!

#### PANTRY NEEDS:

- Help with pantry visitor registration
- Stock shelves
- Assist shoppers and more



#### GARDEN NEEDS:

- Tilling
- Planting and more!



Call Bobbi Jo Tice today for more details about the Food Bank @ 302-515-3020





## Volunteers Needed

Exciting opportunities at Bayhealth Sussex Campus & Total Care on Rt9

Now is the perfect time to join our team of amazing volunteers!

### Wayfinders/Greeters:

As the first person many patients and visitors meet, Wayfinders/Greeters are the first impression many have for Bayhealth. Wayfinders play a vital role in making people feel comfortable, greeting them with a smile, providing wheelchairs and assisting people to get where they need to go. If you have a friendly and outgoing personality this may be a perfect position for you! (Total Care/Rt 9 and Sussex Campus in Milford)

### Emergency Department Support:

Directly help patients and their families feel better by offering warm blankets to patients, coloring books to children, and snacks and beverages to in-room visitors. Offer a smile and a few kind words to our patients, answer their questions, restock rooms, and prepare room for new patients. The perfect position for Volunteers who are friendly and like to keep busy! (Total Care/Rt 9 only)



Looking for another opportunity? Contact Bobbi Jo Tice today 302-515-3020



## Office Support Volunteers Needed

Apply Today!

At Delaware Hospice, our team of volunteers offer a wide range of talents to support our patients, families, and staff.

### Office Support Volunteers May Assist With

- File documents.
- Assemble patient information packets.
- Assist with mailings.
- Provide clerical support.
- Run errands.
- Assist with medical records.
- Answer telephones.



Contact Danielle Briggs for more information

302-515-3029 or email. Danielle.Briggs@delaware.gov



Helping Older Adults Live Independently

## VOLUNTEERS NEEDED

To support and enhance the lives of older adults and improve community quality of life through services, programs, and advocacy.

Serving Milton, Lewes, Rehoboth Beach & Dewey Beach.

### Why volunteer?

- Make a difference in your community
- Build meaningful connections
- Flexible schedules
- No min. or max. hours required

For more information reach out to Danielle Briggs at 302-515-3029

SIGN-UP TODAY!



www.villagevolunteer.org

GET TO KNOW US, BEFORE YOU NEED US.

# THE ARK VOLUNTEER OPPORTUNITY

The Ark is looking for volunteers to help make the world a better place by tutoring students/Assist with homework. Grades: K-12, Subject: Math or Reading. Setting: One-on-One.

### Mentoring Opportunities

208 E. Front Street  
Laurel, DE 19956  
Contact  
Danielle Briggs  
At  
302-515-3029

**Benefits:** This is your opportunity to volunteer and give back to your community. You'll get a sense of personal satisfaction, meet new people, earn volunteer hour etc.  
**Students:** Experience, Letter of recommendations, scholarship opportunities etc.

# Use your compassion and talents to make a difference. Volunteer with AccentCare® Hospice today.



## You can support our local patients and families by becoming a:

- Ambassador Volunteer**
  - Community outreach, volunteer recruitment
- Legacy Volunteer**
  - Create legacies: books, journals, CDs, memory bears, crafts
- Office Volunteer**
  - Administrative assistance
- Social & Companionship Volunteer**
  - Reading, walking, caregiver relief
- Music Companionship Volunteer**
  - Play, sing and share music with patients, families and friends
- Children's Bereavement Camp Volunteer**
  - Work with camp staff and children
- Bereavement Volunteer**
  - Emotional support for patient family and friends
- Spiritual Presence Volunteer**
  - Support patient's faith related requests
- Vigil Volunteer**
  - Companionship during patient's last hours
- Pet Visitation Volunteer**
  - Patient visits with certified Pet Partners or Therapy Dogs

### Special Projects Volunteer

- Volunteer support for special groups or events like We Honor Veterans

For more information contact

Danielle Briggs at  
302-515-3029



Scan me to learn more!

**accentCare.**

[www.accentcare.com/volunteer](http://www.accentcare.com/volunteer)

AccentCare welcomes all persons in need of its services and does not discriminate on the basis of age, disability, race, color, national origin, ancestry, religion, gender, gender identity and/or gender expression, sexual orientation, or source of payment.  
© 2023 AccentCare, Inc. All rights reserved.



**CREATIVE MENTORING®**

A School-Based Mentoring Program That Works!



### BECOME A MENTOR TODAY!

- Mentors meet with their students for an hour once a week during the school year.
- Mentors come from all walks of life: retirees, high school students, office workers, church members, community volunteers, etc. Anyone with a passion for helping children and an ability to accept kids "where they are" can be a successful mentor.
- Mentoring allows adults to give something of themselves in a way that's both selfless and deeply fulfilling.
- Mentors have the privilege of watching their mentees' lives improve as a result of the help, friendship, and guidance they provide.

Bobbi Jo Tice at 302-515-3020 or  
[Bobbi.tice@delaware.gov](mailto:Bobbi.tice@delaware.gov)

**"Connecting Generations provides the tools that children need to become emotionally strong, resilient, and socially competent individuals who can successfully navigate school and life."**

Follow us!  
Facebook, Instagram and Twitter

**MAH is GROWING**

We are happy to announce that we have additional drop-off locations for In-Kind Donations like clothing, camping supplies, toiletries, clothing, etc. We are grateful for these individuals for opening their front porch as a drop-off location for MAH donations. Drop-off of donations can be dropped off daily to any of these locations from 8am - 5pm

141 Aspen Court, Building 26  
Milford, DE 19963

232 S Landing drive  
Milford, DE 19963

5567 Bucks Rd  
Milford DE 19963

400 Pierce Street  
Milford, DE 19963

Phone: 302-663-2470  
email: [mah@milfordhospiceforhomeless.org](mailto:mah@milfordhospiceforhomeless.org)

**DELAWARE TRANSITIONS**  
A Service of Delaware Hospice

# Volunteers NEEDED

**We need your help.**  
Delaware Transitions by Delaware Hospice offers free, non-medical support for individuals and their families struggling with all aspects of a serious illness.

Join our volunteer team to help by:

- Running errands for clients
- Providing transportation
- Visiting clients

Please call for more information:

Danielle Briggs  
302-515-3029

Or email  
[Danielle.Briggs@delaware.gov](mailto:Danielle.Briggs@delaware.gov)

**MAH QUARTER AUCTION**

**SUNDAY NOV 10, 2024**

DOORS OPEN, 3:00 PM  
 AUCTION BEGINS, 4:00 PM

LOCATION: 615 NW FRONT ST, MILFORD, DE 19963  
 CARLISLE FIRE COMPANY BANQUET HALL

ALL IN PADDLE: \$50  
 ADMISSION PADDLE: \$20  
 ADDITIONAL PADDLES: \$10

**\*\*10% OFF DISCOUNT WHEN PURCHASING A TABLE OF 8\*\***

ANY QUESTIONS, PLEASE FEEL FREE TO REACH OUT TO OUR FUNDRAISING TEAM LEAD AT [FUNDRAISING@MILFORDADVOCACYFORTHETHEHOMELESS.ORG](mailto:FUNDRAISING@MILFORDADVOCACYFORTHETHEHOMELESS.ORG)

**Nanticoke Senior Center**  
*cordially invites you to a wedding you won't soon forget!*

Presented by *Quation Dinner Theatre*  
**Friday November 8, 2024**  
**Ceremony 6:30 pm**  
**Doors open 5:30**

**Tickets: \$30.00 pp**  
*Fabulous dinner and show included!*  
*Cash Bar! Limited Seating!!*

**Tickets : Available at Senior Center Office**

**THE WOMEN'S CLUB OF MILTON PRESENTS**

**THE 2024 ANNUAL MILTON Holiday HOUSE TOUR**

**SATURDAY DECEMBER 14**  
**2:00 PM – 6:00 PM**  
 RAIN, SHINE OR SNOW

*"Cozy Winter Cottage" watercolor by Sue Marano*

**2024 Milton Holiday House Tour:** Saturday, December 14, 2024 2:00 pm to 6:00 pm (rain, shine, or snow). The Women's Club of Milton presents a tour of 9 charming homes in Milton, both historic, new, as well as 3 historic public buildings, all beautifully decorated for the upcoming holidays. Help us make this our best Holiday House Tour ever!

**Advance Tickets:** \$25 - call 302-329-9738 to reserve your advance ticket starting November 1, 2024. Or, please visit one of our ticket sale vendors: The Mercantile at Milton, Lewes Gourmet (Lewes), and Friendly Florist in Milton.

**Holly Festival: Saturday December 7:** Advance ticket sales for the 2024 Holiday House Tour will be available at the WCOM Bake Sale Table located upstairs in the Milton Fire Hall. Note: this is one week prior to the event.

**Day of Tour (12/14/24):** \$30 Day of the Tour – Tickets will be available at The Mercantile at Milton and the Milton Historical Society and Museum.

If you call to purchase an advance ticket but are unable to attend, please call 302-329-9738 ASAP so your tickets can be released to another buyer.

Note: Tickets were sold out last year...please reserve early!

The Women's Club of Milton is a member of the General Federation of Women's Clubs. The GFWC is one of the world's oldest and largest women's service organizations dedicated to community improvement through volunteer service. Each club sets its own agenda and works on projects and programs that address the specific needs of its communities. To learn more about the Women's Club of Milton, visit the website at: [www.womensclubofmilton.org](http://www.womensclubofmilton.org); visit our page on [Facebook](https://www.facebook.com/Women'sClubofMilton): Women's Club of Milton; follow the WCOM on Instagram-Women's Club of Milton, DE. We would love to hear from you!

**TICKETS**

**In Advance \$25**  
 Available on November 1, 2024 at: The Mercantile at Milton, Friendly Flowers Florist & Gifts in Milton, and Lewes Gourmet in Lewes, DE.

**Day of Tour \$30**  
 Tickets may be purchased on the day of the tour at: The Mercantile at Milton and the Milton Historical Society and Museum.

**For more information or to reserve tickets: 302-329-9738**

**Love INC: Code Purple**



1 in 3 of Delaware's homeless live in Sussex County.



**YOU CAN HELP MAKE A DIFFERENCE**



**Code Purple Mid-Delmarva**

**CODE PURPLE IS A LOVE INC MINISTRY**

This ministry provides nighttime shelter for our homeless neighbors from December 1st-March 15th.

**OUR LOCATIONS:**

**Women's:**

- Grace Seaford Church
- Milford Nazarene (and children)
- Lutheran Church of Our Savior Rehoboth

**Men's:**

- St. Luke's Parish Hall Seaford
- Georgetown Presbyterian Church
- Avenue United Methodist Church Milford
- St. Jude The Apostle Church Lewes

**WHAT IS OFFERED TO THOSE WE PROVIDE SHELTER TO:**

- CASE MANAGEMENT**
- BEDDING AND COT**
- FOOD/ SNACKS**
- MENTORSHIP**

Call Bobbi Jo Tice at 302-515-3020



IRSC's Annual

# Autumn CRAFT MARKET

November 16th, 2024  
10am - 2pm

Come out and support your local crafters this holiday season!

If you would like a vendor application, give us a call or swing by the Center!



214 Irons Ave.  
Millsboro, DE 19966  
302-934-8839 x 1



## PENNY BINGO

Do you like Playing Penny Bingo?

Come join the fun at Cape Henlopen Senior Center at **11 Christian Street in Rehoboth Beach**. Penny Bingo is held on the **2nd, 3rd, 4th Wednesday of each month**. Doors open at 11:15 am, and games start at 11:45 am. They play 15 regular games and 8 specials.

For more information on how to join CHSC call 302-227-2055.



**Lewes Senior Activity Center**

# HOLIDAY GRAFT FAIR

Saturday, November 2nd

8am-1pm

Over 30 local Craft Vendors  
LSAC Ceramics  
Books & Puzzles

32083 Janice Rd  
Lewes, DE 19958

\*Vendor tables are sold out.



# Let's Learn About Read Aloud Delaware

Does your community have an outreach group that loves to be involved with the community?  
 Read Aloud Delaware is looking for locations to present information.

for more information call Bobbi Jo Tice  
 302-515-3020



## first tee

3rd Annual Seaford Scramble  
 SATURDAY, NOVEMBER 16, 2024



1019 W Locust Street  
 Seaford, DE 19973



9:30 AM Registration  
 11 AM Shotgun Start

Continental Breakfast • BBQ Dinner post round

Consider participating with one of our three sponsorship levels: Ace, Eagle or Birdie.

With these sponsorships, know that you are playing an integral role in helping transform the community by providing access to safe, fun and affordable activities for kids & teens in the Seaford and surrounding communities.

\$400 per Foursome • \$100 per Golfer • \$50 under 18 • \$75 Hole Sign  
 Mulligan's & 50/50 Raffle Tickets

First Tee - Delaware exist to enable kids & teens to build the strength of character that empowers them through a lifetime of new challenges!

Get started by scanning the QR Code  
 or Texting FTDESS24 to 76278  
 or visit FTDESS24.givesmart.com



If you are unable to navigate this registration platform, please call or email Leslie McGuigan at [businessmanagerftde@gmail.com](mailto:businessmanagerftde@gmail.com) or 302-290-1250



302-384-8759 | [firstteedelaware.org](http://firstteedelaware.org)  
 Programming locations throughout the Delmarva Peninsula  
 in Schools, Community Centers and on Golf Courses

## FALL HARVEST FESTIVAL

Big Brothers Big Sisters of Delaware  
 Harvest Festival - Gift Card Donation Drive

Help us bring joy to local families this holiday season!

We are seeking gift card donations from local grocery stores to help families purchase holiday turkeys for the upcoming Big Brothers Big Sisters Harvest Festival. Your generous contribution will make a big difference for families in need, allowing them to enjoy a special holiday meal.

### How You Can Help:

Donate grocery store gift cards to support families in our community.

### Gift Cards Needed From:

- Local grocery stores (e.g., ShopRite, ACME, Giant, Food Lion, etc.)

### Please Mail Donations To:

Big Brothers Big Sisters of Delaware  
 3411 Silverside Rd  
 Baynard Building, 240  
 Wilmington, DE 19810

OR

E- gift Cards

Every donation counts! Your support will help ensure families can celebrate this holiday season with a warm, festive meal.

Thank you for helping us make the holidays brighter for local families!

For more information, contact us at:  
 Phone: (302) 401-1008  
 Email: [ldaniels@bbbsde.org](mailto:ldaniels@bbbsde.org)  
 Website: [bbbsde.org](http://bbbsde.org)



# Senior Center Coffee Connect

Each  
Tuesday  
10am - 11am

On Tuesday mornings we have coffee, juice, and bagels. Come learn what IRSC has to offer and mingle with some of our members. Breakfast is on us!

 214 Irons Ave.  
Millsboro, DE 19966  
302-934-8839

## Cape Henlopen Senior Center

11 Christian Street, Rehoboth Beach, DE (302) 227-2055

# Annual HOLIDAY FAIR

**Saturday, November 16, 2024**  
**10:00 am to 3:00 pm**

### Craft Vendors

<ul style="list-style-type: none"> <li>• Avon</li> <li>• Baked Goods</li> <li>• Bracelets</li> <li>• Designer Candles</li> <li>• Doll Clothes</li> <li>• G W Melfa Watercolor Prints</li> <li>• Handcrafted Items</li> <li>• Holiday Items</li> <li>• Home-made Scented Jar Candles</li> <li>• Hand-made Jewelry</li> </ul>	<ul style="list-style-type: none"> <li>• Knitting &amp; Crochet Items</li> <li>• Paintings-Originals</li> <li>• Paintings of Animals</li> <li>• Purses, Place Mats, etc.,</li> <li>• Seasonal Fabric Trees</li> <li>• Solar and Electric Lamps</li> <li>• Wine Bags, Kitchen Accessories and Shirts</li> <li>• Wreaths and Centerpieces</li> <li>• Wristlets, Keychains &amp; Zipper Pulls</li> <li>• And much more.</li> </ul>
---	---

- Refreshments will be available for purchase.
- Open to the Public.
- Come and start your early holiday shopping.



# RAFFLE

**ONLY \$20 PER TICKET**  
For a chance to win  
**TWO (2) CHOICE SEATS**  
(VALUED AT \$1,900!)

## EAGLES VS COWBOYS

**SUNDAY, DECEMBER 29 AT 4:25 PM**

Purchase raffle tickets at Cape Henlopen Senior Center, 11 Christian Street, Rehoboth Beach - (302) 227-2055. We accept cash, checks, and major credit cards. You do not need to be a Center member to participate in this Raffle.

**Drawing will be held on December 18, 2024.**  
**WINNER WILL BE NOTIFIED.**



### Mid-Delmarva

HELP LOVE INC. OF MID-DELMARVA WITH COLLECTING SOME MUCH-NEEDED SUPPLIES.

- SINGLE-SERVE SNACK ITEMS (FRUIT CUPS, CRACKER PACKS, CHIPS, MEAT POUCHES, GRANOLA BARS, ETC.)
- BOTTLED WATER
- POWDER DRINK FLAVORING (SINGLE-SERVE OR BULK CANISTER)
- SANDWICH BREAD
- LUNCH MEAT AND CHEESE
- MEN'S AND WOMEN'S UNDERWEAR
- MEN'S AND WOMEN'S SHORT SOCKS
- MEN'S AND WOMEN'S T-SHIRTS
- MEN'S AND WOMEN'S HOODIES

For more information contact Bobbi Jo Tice at 302-515-3020 or email [Bobbi.Tice@delaware.gov](mailto:Bobbi.Tice@delaware.gov)

\*MOBILIZING LOCAL CHURCHES TO TRANSFORM LIVES AND COMMUNITIES IN THE NAME OF CHRIST.\*



Fill the Box,  
Bless our Neighbors!  
An Advent Calendar in  
Reverse

Instructions for filling your box:

As you prepare for the Holiday season, fill a box with food to bless our neighbors in need.

Instead of opening a window on an Advent calendar, put something into you Advent box daily to give away, and watch it fill up as you approach Christmas Eve!

Once the box is filled, where do I deliver it to?

Deliver the contents directly to the Food Bank of Delaware in  
**Milford!**  
1040 Mattlind Way Milford, DE 19963

2024 HOLIDAY GIVING CALENDAR						
Sunday	Monday	Tuesday	Wednesday	Thursday	Friday	Saturday
December 1	December 2	December 3	December 4	December 5	December 6	December 7
Gift - Oatmeal	Gift - Peanut Butter	Gift - Canned Fruit	Gift - Canned Meat (tuna, salmon)	Gift - Shelf-Stable Milk, 8 oz containers	Gift - Canned Veggies	Gift - Spaghetti Sauce
December 8	December 9	December 10	December 11	December 12	December 13	December 14
Gift - Cereal	Gift - Macaroni & Cheese	Gift - Pasta	Gift - Canned Sweet Potatoes	Gift - Canned Peas	Gift - Rice	Gift - Applesauce
December 15	December 16	December 17	December 18	December 19	December 20	December 21
Gift - Boxed Potatoes	Gift - Cranberry Sauce	Gift - Stuffing Mix	Gift - Canned Corn	Gift - Canned Green Beans	Gift - Hearty Soup	Gift - Canned Mixed Vegetables
December 22	December 23	December 24	December 25			
Gift - Corn Muffin Mix	Healty Snacks (granola bars, raisins)	Gift - More Peanut Butter (Urgent Need)	Christmas Day			

Once Box is filled deliver to local Food Bank  
\*\*\*The Food Bank requests that you do not use paper plates when possible\*\*  
Thank you for your generosity during this Holiday Season!



**Food Bank of Delaware**

*The Food Bank of Delaware relies on the generosity of the community to help feed hungry people. The Food Bank solicits, warehouses and distributes food through a network of hunger-relief program partners. Our partners include food pantries, soup kitchens, emergency shelters and other community food providers. In turn, agencies prepare balanced, nutritious meals or distribute food items to those with limited resources. Please help us feed more hungry Delawareans by donating to the Food Bank of Delaware.*

**Please note,** the Food Bank of Delaware cannot accept hard candy, lollipops, soda in cans and bottles, chocolate bars or pieces, gum and soft candy such as marshmallows, caramels, taffy, licorice and gummy items. **Thank you for not adding these items in your box!**



**5th WINE AND DINE EVENT TO BENEFIT READ ALOUD DELAWARE**

A 4-Course dinner with selected wine pairings for each course

**WHEN** - Wednesday, November 13, 6-9 pm

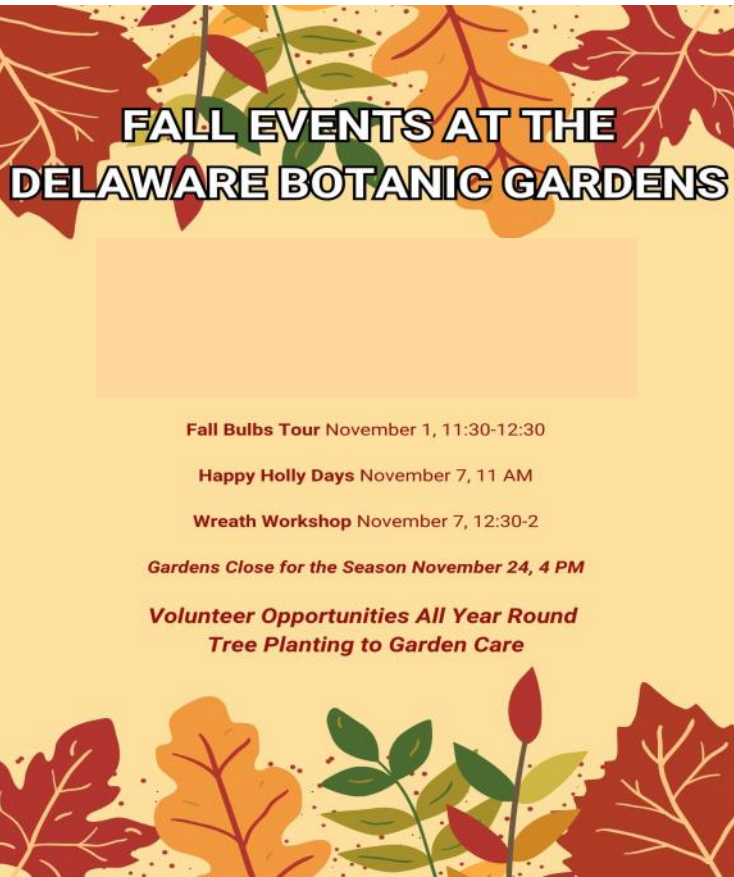
**WHERE** - Victoria's Restaurant  
2 Olive Avenue  
Rehoboth Beach, DE 19971

**COST** - \$85 per person

**NEW THIS YEAR...**A Silent Auction!

Seats are limited...Please call 302-644-6886 to save your spot by November 8. You will be contacted to confirm your reservation.

Can't join us that night? Consider having breakfast or lunch at The Point Coffeehouse (7am-2pm) or drinks at The Plaza Pub (opens at 3pm) that day. A percentage of their proceeds will also benefit Read Aloud Delaware.

**FALL EVENTS AT THE DELAWARE BOTANIC GARDENS**

**Fall Bulbs Tour** November 1, 11:30-12:30

**Happy Holly Days** November 7, 11 AM

**Wreath Workshop** November 7, 12:30-2

**Gardens Close for the Season** November 24, 4 PM

**Volunteer Opportunities All Year Round**  
Tree Planting to Garden Care

## Community Partners

Alzheimer’s Association	Delaware Botanic Gardens	Milford Advocacy for the Homeless
American Legion Aux. #17	Delaware Hospice/South Division	Milford Public Library
American Red Cross of Delmarva	Delaware Senior Medicare Patrol Program	Milford Wellness Village
American Veterans Thrift Store	Delaware Veterans Home	Milton CHEER Center
Atlantic Shores Rehab & Health Care	Easter Seals	Nanticoke Senior Center
Autism Delaware	First Tee-Delaware	Nanticoke Watershed Alliance Creek Watchers
Auxiliary of Stockley Center	Food Bank of Delaware	New Life Thrift Shop
Back Bay Strummers	Georgetown CHEER Center	Ocean View Volunteers
Barbara K. Brooks Transition House	Georgetown Public Library	Ombudsman Program
Bayhealth Medical Center	Georgetown VA Clinic	Overfalls Foundation
Beebe Healthcare	GFWC Women’s Club of Indian River	Pathways to Success, Inc.
Big Brothers/Big Sisters of Delaware	GFWC Zwaanendael Women's Club	PAWS for People
Blood Bank of Delmarva	Good Samaritan Aide Organization, Inc	Possum Point Players
Boys & Girls Clubs of Delaware	Greenwood CHEER Center	Prime Hook National Wildlife Refuge
Brandywine Living at Seaside Pointe	Greenwood Public Library	Read-Aloud Delaware
Brandywine Valley SPCA	Habitat for Humanity	Robin Hood Thrift Shop
Bridgeville Senior Center	Habitat ReStore	Ronald McDonald House of Delaware
Cancer Support Community	Harbor Health Care Center	Roxana CHEER Center
Cape Henlopen School District (K-12)	Harbour Lights CHEER Center	Shoes That Fit
Cape Henlopen Senior Center	Indian River School District (K-12)	South Coastal Library
CareWear Project	Indian River Senior Center	Special Olympics Delaware
CASA Program	Laurel Senior Center	The ARK Educational Consulting, Inc.
Casa San Francisco	Lewes Senior Activity Center	Thresholds, Sussex Correctional Institute
CHEER Coastal Leisure Center	Little Grace Kids	TidalHealth-Nanticoke
ChristianaCare Hospice in collaboration with Delaware AccentCare	Long Neck CHEER Center	Village Volunteers
Coastal Concerts, Inc.	Love INC of Mid-Delmarva	VITAS Healthcare
Community Resource Center	Manor House	Volunteer Delaware 50+ Advisory Council, Inc.
Connecting Generations	Mason-Dixon Woodworkers	Volunteer Delaware 50+ Technical Assistance
Contact Lifeline	Matter of Balance	Women’s Club of Milton
DCRAC (DE Community Reinvestment Action Council)	Meals on Wheels Lewes-Rehoboth	