



New Castle County Edition

*Lets Make History
Together*

Volunteer Delaware 50+ is a statewide program offered through the State

Office of Volunteerism within the Division of State Service Centers.

The mission is to engage persons 50 and older in volunteer service, to meet critical community needs and to provide a high quality experience that will enrich the lives of Volunteers.

ENROLL TODAY!

COMMUNITY RESOURCES & OPPORTUNITIES

*Historical records suggest that
VOLUNTEERING started in America in
1736 when Benjamin Franklin founded
the first volunteer firehouse after a ship
fire burned down the wharf, warehouses
and neighboring houses.*

*We cannot wait to celebrate
today's volunteers who are
making **HISTORY** at our
Annual Volunteer Recognition !!*

[Volunteer.Delaware.gov
/Volunteer-Delaware50](https://Volunteer.Delaware.gov/Volunteer-Delaware50)

What is Volunteer
Delaware 50+?
Pages 1 – 3

September & October
Birthdays
Page 4

Volunteer Spotlight
Pages 5

News From Our
Partners & Volunteer
Opportunities
Pages 6 – 34

Community Resources
Page 35



2023 NEW CASTLE COUNTY COMMUNITY PARTNERS

A Matter of Balance
302-515-3026

Alzheimer's Association
215-561-2919

American Cancer Society
1-800-227-2345

American Red Cross of Delmarva
302-656-6620

B'nai B'rith House
302-798-6846

Big Brothers Big Sisters of Delaware
302-998-3577 ext 105

Blood Bank of Delmarva
302-737-8405

Brandywine Valley SPCA
302-858-4202

CareWear Project
Knitters and Crocheters
Bags2Mats for the Homeless
302-255-9746

CASA (Office of Child Advocate)
Count Appt. Spec. Advo.
302-255-1730

Channie P. Bradley Senior Services
215-520-7525

Child, Inc.
302-762-8989

Children & Families First
302-777-9757

Children Empowered by Love, Inc.
childrenempoweredbylove@comcast.net

ChristianaCare
302-733-1284

Wilmington Hospital
302-428-2206

ChristianaCare in Collaboration with AccentCare (formerly known as Seasons Hospice)
302-533-3800

Connecting Generations
302-656-2122 x0010

ContactLifeline
302-761-9800 ex. 1002

Delaware Center for Horticulture
302-658-6262 ext. 108

Delaware Ecumenical Council on Children and Families
302-225-1040

Delaware Hospice
302-478-5707

DE Museum of Natural History
302-658-9111X 324

Delaware Theatre Company
302-594-1100

Easterseals Delaware
302-324-4444

Family Promise of Northern NCC
302-998-2222

Food Bank of Delaware
302-292-1305 ext 254

Forget Me Not Families
302-416-2897

Grand Opera House
302-658-7897

Habitat for Humanity of NCC
Construction Site: 302-652-0365
ReStore Wilmington: 302-652-5181
ReStore Middletown: 302-449-1414

Hagley Museum & Library
302-658-2400 X257

Literacy Delaware
302-658-5624

Lutheran Community Services
302-654-8886

Lutheran Senior Services Inc.
302-652-3737

MOT Jean Birch Senior Center
302-378-4758

NAMI DE (National Alliance on Mental Illness- 302-427-0787

New Castle County
Absalom Jones Senior Center
302-995-7636

Depart. of Community Services
302-395-5640

New Castle County Libraries
302-395-5617

NCC Senior Roll Call Lifeline
(302) 395-8159

Nemours Children Hospital
302-651-6096

New Castle Senior Center
302-326-4209

Newark Senior Center
302-737-2336

Meeting of the Minds
Newark Meals on Wheels
302-737-5747

Senior Surfers
302-737-2336

Patches of Love
302-255-9746

PAWS for People
302-351-5622

People to People: Delaware Chapter
info@ptpde.org

Read Aloud Delaware
302-656-5256

Ronald McDonald House of DE
302-428-5340

Special Olympics Delaware
302-831-4653

St. Anthony's Community Center
302-421-3721

City Fare Meals on Wheels
302-421-3734

St. Anthony's Senior Center
302-421-3735

Stockings for Soldiers Delaware Inc.
info@StockingsForSoldiers.org

Supporting Kidds Inc.
302-235-5544

The Ministry of Caring
Emmanuel Dining Room E/S/W
302-652-3228

Thomas Edison Charter School
302-778-1101

Tri-State Bird Rescue & Research Inc. 302-737-9543 x102

United Way of Delaware
302-573-3705

Volunteer Delaware
302-381-3594

Volunteer Delaware 50+ NCC Advisory Council
302-515-3026

Warriors Helping Warriors
302-696-2320

Wilmington Senior Center
302-651-3400

Winterthur Museum, Garden & Lib.
800-448-3883

For more information on how to become an official Volunteer Delaware 50+ Community Partner, please call 302-255-9746 or email Guadalupe.Murphy@delaware.gov

VOLUNTEER DELAWARE 50+



Volunteer Delaware 50+ focuses on helping individuals 50 years of age and older, use the skills and talents learned over the years, or develop new ones while serving in a variety of volunteer activities within the community. Volunteer Delaware 50+ volunteers determine their preferred level of commitment. Come join the more than 2,500 Volunteer Delaware 50+ members and start making a difference today!

What are the benefits of becoming a Volunteer Delaware 50+ member?

- All members receive supplemental insurance protection in case anything happens **while** they are volunteering with one of our community partners (excess volunteer liability insurance & excess automobile liability insurance)
- Opportunity for outstanding volunteers to attend a free recognition luncheon and enter to win door prizes (must meet required hours)
- Opportunity to receive a monthly listing of one-time volunteer projects, upcoming events and ongoing volunteer opportunities (sent via email)
- Invitation to attend free educational workshops on topics pertaining to the 50+ community (sent via email)
- Tracking of hours and years of service

Why do you collect my volunteer hours?

- Helps us to qualify for grants and places us in a better position to advocate for continued funding, not only for our program but also for our community partners
- Helps us to quantify all the amazing volunteer work Delawareans are doing for our state/in our communities
- Helps us to identify and recognize our outstanding volunteers through our annual Volunteer Recognition Luncheon

Are you already a volunteer with one of our community partners and would like to also be a member of Volunteer Delaware 50+?

We are always looking-for and inviting non-profit organizations to join us and become a community partner in order to offer even more opportunities to our members. If you are already a volunteer with one or more of our community partner and would like to also become a member of Volunteer Delaware 50+ please contact your local office.

New Castle County: please call 302-255-9746 or email Guadalupe.Murphy@delaware.gov

Kent/Sussex County: please call 515-3020 or email Danielle.Briggs@delaware.gov or Bobbi.Tice@delaware.gov

For more information please visit Volunteer.Delaware.gov/Volunteer-Delaware50





Anna Marie Adams

Carol Baboolal

Nancy Brock

Regina Brothers

Pauline Browne

Susan Cherrin

Jeanne Curtis

Donna L. Draper

Milton Draper

Patricia Dunphy

Linda Fairchild

Kathy Garbett

Douglas Giambra

Patricia Gonzoph

Candie Hart

Elizabeth Hastings

Dewittfield Henry

Marilyn Huebner

Rosemary Jackson

Charles H. Jones

JoAnn Littleton

Carolyn C. Miller

Rebecca Pernol

Renee Y Pickett

Brenda Potts

Gail Scarborough

Patricia Seramone

Leslie Sherman

Carolyn Stankiewicz

Mary Jo Sweeney

Michael Tyrrell

Jeannie Van Dan

Christine Vanveen

Patricia Wingate

Joseph O. Birmingham

Mary Boone

Joan Boyle

MaryEllen Butkiewicz

George Butler

Pearl Carlton

Elenor Carter

William Conley

MaryBeth Connors

Mary Del Genio

Jane Dey

Linda Dorsten

Martin Drinan

Cheryl Drummond

Angela Fierro



Susan Fox

Tish Gallagher

Clare Garrison

Susan Giaccore

Nancy Goettel

Nancy Goettel

Gregory Haley

Richard Harder

Jean Hedrich

Elaine Jackson

Elaine Keegan

Elizabeth Lantz

Joyce Logan

Michael Mansfield

Beth Masci

Joel McLaughlin

Linda Oliver

Christina Parsons

Lynne Robinson

Frank Romanelli

Erika Schirm

Karen B. Skurla

Sandra L Slowik

Thelma (Pinky) Smith

Paula Steele

Jean Stofa

Allen Streett

Elayne Tomb

Jaime Tomlinson

Winnie White

Tasmania Wootson

Barbara Zeigler



Volunteer Spotlight: Ms. **Patty Seramone**, Volunteer Delaware 50+ volunteer with the **Brandywine Valley SPCA**.

Patty is a new member of Volunteer Delaware 50+ and has been volunteering with the Brandywine Valley SPCA since she retired in 2018. She is a former teacher who continues her commitment to service through her volunteer work.

Patty helps in many departments at the BVSPCA; she walks dogs, interacts with cats, works the adoption events, and provides support at the community events. Though Patty is willing to help wherever needed, she spends most of her time in the surgery ward, where she cleans instruments, prepares surgery packs for sterilization, and assist the vets and techs in any way they need.

Patty shares an instance where she met a dog in great need of love:

"There was one dog who had severe stranger danger, barely no one could approach her. I slowly gained her trust, walked her, took her in public, got her to realize people weren't all that bad. I took her for a weekend at my house away from the shelter and was able to provide information on how wonderful she was. She got adopted shortly after because of that I believe! Her adopters saw her profile in my home!"

A happy ending for a wonder pupper in need!

The Brandywine Valley SPCA needs more volunteers, Patty shares that there are plentiful of opportunities




to get involved from surgery, clinic, cleaning, cats, dogs, events, organizational needs, paperwork, some things can even be done at home. If you love animals, but are not in the position to have one, you can volunteer and still have that relationship without taking one home. She says "animals are truly helpless without people helping them. The [biggest] reward is seeing so many animals go from bad and desperate situations to loving homes".

To learn more about the Brandywine Valley SPCA and how you can get involved, visit bvspca.org/get-involved/volunteer.

Thank you to Camille Vance, our AmeriCorps VISTA member, for capturing Ms. Patty's passion for volunteerism.

If you have a story you would like to share OR you are one of our Community Partners that would like to highlight your Volunteer Delaware 50+ member, please let us know by emailing Guadalupe.Murphy@delaware.gov or by calling 302-255-9746.

**Get excited to CELEBRATE the most rewarding
volunteer 'work' you completed in 2022!**



**Volunteer Delaware 50+
Volunteer Recognition**

2023

**Be on the look out
for invitations soon! ***

** Invitation will be sent to Volunteer Delaware 50+ members who joined prior to and met hours criteria during the 2022 calendar year.*

A NOTE FROM OUR PARTNER

**A MATTER OF
BALANCE**

MANAGING CONCERNS ABOUT FALLS

COACHES NEEDED STATEWIDE

**Many older adults experience concerns about
falling and restrict their activities.**

A MATTER OF BALANCE

**is an award-winning program designed to help
seniors manage falls and increase their activity levels.**

***Become a Coach
Join us for free training!***

10/24/23 & 10/25/23

OR

1/30/24 & 1/31/24

10:00 a.m. - 2:30 p.m.

**Williams State Service Center
805 River Road
Dover, DE 19901**

**For more information or to register contact
Volunteer Delaware 50+
Danielle.Briggs@delaware.gov
302-515-3020**

A NOTE FROM OUR PARTNER



Since we send out roughly 10,000 stockings a year, we need about the same amount of every item on our Project Shopping List to go into the stockings, so please consider bringing some of the needed items with you. Even consider organizing a collection drive at your school, church, synagogue, scout troop, service club, or workplace to collect items we need. For a copy of the *Project Shopping List*, please visit the **Items Needed** tab at stockingsforsoldiers.org or email info@StockingsForSoldiers.org.

This is the **BEST** way to help us. Thank you for holding a collection drive.

**Donation
Deadline:**
November 16

**Donation
Hours:**
AM Hours:
Tu & Th
1:00 - 3:00pm

PM Hours:
M, Tu, W, & Th
6:30 - 8:30pm

**Location &
Times:**
Brandywine
Town Center:
5300 Brandywine Park-
way
Wilmington,
19803
next to Bob's
Discount
Furniture



20th Annual Stockings for Soldiers



FROM: October 9th, 2023 **TO:** December 1st, 2023

Please Help Send Some Holiday Cheer to Our Troops.

Our brave Troops in Harm's Way would love to receive stockings for the holidays. Over the past **19 years**, our project has sent over **143,000** stockings to our deployed troops. We want to continue to let them know we are thinking of them while they are away from home and their families. We need your help to fill their stockings with Holiday Cheer and Goodies that remind them of home.

Suggested Items:

Please see the link to our Wish List on Amazon on our website's Home Page.

- **Small Individually Packages Meals:**
TUNA, Lasagna, Beef-A-Roni Smaller package (8 oz or less)
- **Mole Skin**
- **Slim Jims/ Beef Jerky**
- **Toothbrushes & Small Toothpastes**
- **Small Candy, chocolate is great.**
Mini-candy bars
Candy: **Christmas/ Halloween**
- **Snowman Soup**
- **Chewing Gum**
- **Beanie Babies**
- **Granola/Fruit/Break fast Bars**
- **Cookies/Nuts/ Pretzels/Trail Mix**
Less than 12 oz. size
- **Flavored drink mixes** (Single Packets)
Lemonade, teas, hot cocoa, coffee
- **Paperback Books**
(no romance novels)
- **Lip Balm**
- **Fruit roll-Ups/ Gushers**
- **Razors**
- **Ramen Noodle soup in Bricks only**
No Cup of Noodles, please
- **Crew Socks** are **NOT** needed due to **HUGE** donation from **♥ BOMBAS ♥**
- **Toiletries & lotions** (small sizes)
- **Baby Wipes**
- **Foot powder, sun block**
- **DVD Movies & Music CDs**
- **Pocket games & puzzles, Pens**
- **Fly Swatters**
- **Crossword, Sudoku Puzzles**
- **Letters of Appreciation from children**

No aerosol cans No bars of soap No hand sanitizer, please.

Join us in volunteering at this annual event!!!



With all the items being collected, we will need help at our Stocking Store! Come help us with all of the different jobs that need to be done during our operating hours. We especially need help in November when we stuff the stockings.

Volunteer Dates & Hours

Dates: Mondays through Thursdays starting October 9 through December 1

Times: 6:30pm to 8:30pm

Roles may include, receiving and sorting donations, stuffing the stockings, boxing and preparing items for shipping.

Volunteer Location:

Brandywine Town Center, 5300 Brandywine Parkway,
Wilmington, Delaware 19803
(to the right of Bob's Furniture)

Please consider donating a "worn out" American flag to our project so that it can be repurposed to honor both our active and retired US veterans.

Stars from each flag will be used to create small packs called "Star Packs". Each pack contains one star and the following message:

I am part of our American Flag. I have flown over a home in the U.S.A. but I can no longer fly. The sun and wind have caused me to become tattered and torn. Please carry me as a reminder that YOU are not forgotten.



Worn/not flyable flag
dimensions: 5' x 8'

OCTOBER

SUNDAY	MONDAY	TUESDAY	WEDNESDAY	THURSDAY	FRIDAY	SATURDAY
	20th Annual Stockings For Soldiers					
1 New Daytime Drop Off Donations Only	2	3	4	5	6	7
8	9 1 st Week - OPEN for Donations & WELCOME Volunteers Receiving Stockings & Sorting Goodies	10 Receiving Stockings & Sorting Goodies	11 Receiving Stockings & Sorting Goodies	12 Receiving Stockings & Sorting Goodies	13 Store Closed	14 Store Closed
15 Store Closed	16 Receiving Stockings & Sorting Goodies	17 Receiving Stockings & Sorting Goodies	18 Receiving Stockings & Sorting Goodies	19 Receiving Stockings & Sorting Goodies	20 Store Closed	21 Store Closed
22 Store Closed	23 Receiving Stockings & Sorting Goodies	24 Receiving Stockings & Sorting Goodies	25 Receiving Stockings & Sorting Goodies	26 Receiving Stockings & Sorting Goodies	27 Store Closed	28 Store Closed
29 Store Closed	30 Receiving Stockings & Sorting Goodies	31 Halloween				

NOVEMBER

SUNDAY	MONDAY	TUESDAY	WEDNESDAY	THURSDAY	FRIDAY	SATURDAY
Store Closed	Receiving & Sorting Goodies				Store Closed	Store Closed
5 Store Closed	6 Stuffing Stockings & Packing Boxes	7 Stuffing Stockings & Packing Boxes	8 Stuffing Stockings & Packing Boxes	9 Stuffing Stockings & Packing Boxes	10 Store Closed	11 OPEN Stuffing & Packing 10 am - 1 pm
12 Store Closed	13 Stuffing Stockings & Packing Boxes	14 Stuffing Stockings & Packing Boxes	15 Stuffing Stockings & Packing Boxes	16 Stuffing Stockings & Packing Boxes	17 Store Closed	18 Store Closed
19 Store Closed	20 Stuffing & Packing Closing Boxes	21 Stuffing & Packing Closing Boxes	22 Thanksgiving Closed	23 Closed	24 Store Closed	25 OPEN Stuffing & Packing 10 am - 1 pm
26 Store Closed	27 Stuffing & Closing Load Truck	28 Stuffing & Closing Load Truck	29 Stuffing & Closing Load Truck	30 Stuffing & Closing Load Truck	Dec. 1 Clean Up Load Truck	Dec. 2 Boxes - on their way

A NOTE FROM OUR PARTNER

Join October 7th & 8th as People to People Delaware Chapter promotes Peace Through Understanding in our local community!

Peace Week DELAWARE

October 7-15, 2023



THE ACADEMY FOR PEACE AND
PEOPLE TO PEOPLE DELAWARE
PRESENT TWO EVENTS TOGETHER

We are one!

Innovations & Collaborations for Peace

Reading for Peace October 7, 2023 4:00-6:00 pm
Finist & the Owl Bookery 811 Brandywine Blvd., Wilmington, DE

Peace March October 8, 2023 from 3:00-6:00 pm
Academy for Peace 203 N. Market Street Wilmington, DE

- Peace Reading October 7th in an artistic space hosted at the Finist & the Owl Bookery.
- March for Peace on Market St. led by the Fashion Steppers Youth Band at the Academy for Peace.
- Recap of Superheroes for Peace Awards.
- Fun activities & dynamic entertainment for all ages.
- Events led by: Dr. Jay Macklin, Academy for Peace



www.ptpde.org



www.stvacademyforpeace.org



Finist & the Owl
Bookery



For a complete listing of Peace Week Delaware events, go to www.peaceweekdelaware.org

A NOTE FROM OUR PARTNER

PAWS for People's

WAG & Walkathon

In Partnership with

**A Cumulative Marathon September 21 - October 21, 2023**

The Wag & Walkathon is our biggest fundraising event of the year! People of all ages are invited to get pledges from their family, friends, and neighbors and come together to complete a cumulative marathon. Some create teams and others participate as individuals.

What is a Cumulative Marathon?

If you have always wanted to run a marathon but 26.2 miles in a few hours is not your style, this is the event for you! There has never been a easier way to do a marathon. Simply log 26.2 miles between September 21 – October 21. The best thing about this event is that you can do it anytime and at your own pace.

Participants can walk with a friend, a pet, or own their own. Everyone can participate in the way they choose. The goal is to get up and moving to reach 26.2 miles over the month!

**Not a registered
PAWS for People volunteer?
No problem,
this event is open to
EVERYONE!!!**

Registration

Please visit: www.pawsforpeople.org

You may register as an individual or
create a team!



**PAWS for People's 15th Annual
WAG & Walkathon**

A NOTE FROM OUR PARTNER



American Red Cross
National Capital & Greater
Chesapeake Region

Will You Prevent & Alleviate Suffering?

Join us to learn how you can help!

In your community and across the country, American Red Cross volunteers prevent and alleviate human suffering. We need people to become part of the solution to some of our country's greatest challenges. This can range from single family fires to major disasters like hurricanes and wildfires across the country. This can also include supporting local blood drives and providing service to the U.S. military, veterans, and their families.



Join us for a virtual information session to learn more!

**Saturday, September
23 10:00am - 11:00am**

Volunteering is good for you and good for your community. Learn about how you can make a difference and bring help and hope as a Red Cross volunteer!

**Friday, October 20
12:00pm - 1:00pm**

Fall is here and severe weather is on the rise. The need for compassionate volunteers has never been greater. Learn how you can be part of our work.

**Friday, November 10
12:00pm - 1:00pm**

Learn how you too can help support veterans, active military and their families, people displaced from their homes by disaster and our community blood drives.

**Self report
hours**

NOW is the perfect time to JOIN US ... GET TRAINED ... and BE PREPARED to help your local community! Learn about positions with blood donation centers, disaster action teams, and much more. Come listen, learn and ask your questions!

For more information, please contact Volunteer Delaware 50+ at 302-255-9878 or email Guadalupe.Murphy@delaware.gov

**Special
Olympics**
Delaware



A NOTE FROM OUR PARTNER

CALLING FOR VOLUNTEERS



**Special
Olympics**
Delaware



FALL FESTIVAL



SPONSORED BY:

CHASE



JOIN US!

October 27-28, 2023

*Various roles & shifts available
at St. Andrews School*



For more information, please
contact Volunteer Delaware 50+
at 302-255-9878 or email
Guadalupe.Murphy@
delaware.gov

A NOTE FROM OUR PARTNER



HELP COLLECT PLASTICS TO MAKE MATS FOR THE HOMELESS

Accepted Items

All items must be
clean

- grocery bags
- newspaper bags
- bubble wrap
- amazon packaging
- dry cleaner bags
- plastic packaging
- paper towel packaging
- plastic mail packaging
- water bottle 'case'

Not Accepted Items

- Anything dirty
- Any plastic that can still be used for its original purpose- our goal is to recycle.
- Water bottles
- tupperware



GUADALUPE MURPHY: 302-255-9746 GUADALUPE.MURPHY@DELAWARE.GOV

A NOTE FROM OUR PARTNER

The Never Alone Project

PROVIDING FRIENDLY SUPPORT TO OUR DELAWARE ELDERLY AND DISABLED NEIGHBORS WHO MAY BE FEELING SOCIALLY ISOLATED DUE TO COVID-19 PANDEMIC AND OTHER LIFE FACTORS.



Social isolation and loneliness have gradually become contributing factors to increased illness among elderly, disabled and chronically ill persons. This has become intensified as we have been facing the COVID-19 pandemic for 3+ years now. Through this project, Delaware Ecumenical Council on Children and Families (DECCF) will promote resilience by establishing new, and supporting existing relationships with clients, caregivers, and families.

We seek to do this through establishing weekly (or other frequent) calls as telephone reassurance that someone is there for them should they want to talk about what

they are experiencing. The Never Alone Project will perform a high-level screening for social isolation, and make voluntary referrals to behavioral health professionals should follow-ups be necessary. Also, a "Coping in Times of COVID-19" toolkit for seniors, will be provided to each participant



- Safe Companionship
- Friendly Check-ins
- Isolation/Loneliness Assessment
- Encouragement
- Inspirational Writings
- Informed Delaware COVID-19 updating
- "Coping in Times of COVID-19" toolkit for seniors

Let us help you, and/or a loved one through these challenging times.

Register today.



Delaware
Ecumenical
Council on
Children and Families

Kent County/Northern Sussex –

- Deborah Killen – (302) 650-8984

New Castle- Brian K. Sanders – (302) 225-104

- Naa Sackley Huffman – (302) 898-4983

Smyrna/ Clayton/ Middletown/ Odessa/ Townsend -

- Gail LaGasse – (302) 650-8868

2629 W. 19th Street
Wilmington, DE 19806

www.deccf.org

A NOTE FROM OUR PARTNER

What is a CASA?

A CASA (Court Appointed Special Advocate) is a specially trained volunteer appointed by a Family Court Judge to advocate for the best interest of a child experiencing foster care.

What do CASAs do?

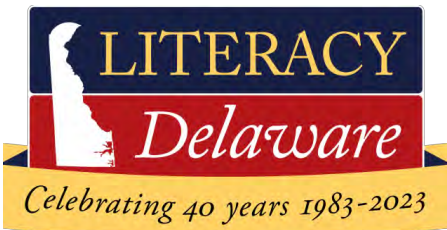
- Advocate for children experiencing foster care due to abuse and neglect.
- Establish strong, stable connections with their assigned youth.
- Advocate to ensure the child receives needed essential services.
- Attend meetings and gather information from parties involved in the child's life.
- Work with the Child Attorney and CASA Coordinator to make recommendations in court for what's best for the child.
- Remains involved in the case until the child is reunified with their family or when that is not possible, works to find a safe and permanent home.
- Meet with the child face-to-face at least once a month.
- Attend all court hearings to testify to their findings and recommendations as the child's advocate.

**Scan to learn more, or
call us at call us at
302-255-1730!**



Why Become a CASA?

Our mission is to be a voice for Delaware's abused and neglected children through skilled volunteers, community collaboration, and quality representation, instilling a need for safe and permanent relationships that will build healthy and resilient children.



"But I'm not a teacher."

If you've ever taught someone how to tie a shoe or to learn their ABCs, you have been a teacher.



Volunteer Delaware 50+
302-255-9878
Guadalupe.Murphy@delaware.gov

A NOTE FROM OUR PARTNER

BE A HERO
for Homeless Pets
VOLUNTEER

DOVER | WESMISTOWN | NEW CASTLE | WEST CHESTER

SIGN UP TODAY!
BVSPCA.ORG/VOLUNTEER



MAKING STRIDES
AGAINST BREAST CANCER®



MAKING STRIDES AGAINST BREAST CANCER OF DELAWARE

Sunday, October 22nd, 2023
Bellevue State Park
800 Carr Road, Wilmington, DE 19809

Registration: 8:30 a.m. | Rolling Walk Start | Ends: 12:00 p.m.

WE ARE THE MOVEMENT. WE ARE THE HOPE. WE ARE THE FUTURE.



www.MakingStridesWalk.org/Delaware



FALL FLEA MARKET

Come shop with us!!!

A variety of booths offer items including clothing, books, kitchen items, electronics, linens, toys and much more!

Shop for the best deals in town.

Thursday, October 26th - 5pm to 7:30pm
5pm - Chicken BBQ by Brookside Lions Club

Friday, October 27th - 9am to 5:00pm

Saturday, October 28th - 9am to Noon

Donations accepted
October 2nd - October 20th.



A NOTE FROM OUR PARTNER

At Family Promise NNCC, our mission is to prevent and end homelessness for families by engaging volunteers, donors, and the faith community. We shelter families with children, while they are experiencing homelessness, and assist them in securing housing. For over ten years, volunteers have helped us achieve this mission by caring for our families and supporting our programs.

Supply Wish List

Thank you for helping to end family homelessness! Hundreds of families in all of our programs count on donors and supply drive organizers like you for the following essential supplies.

Our drop-off location is: 2104 St. James Church Road, Wilmington, DE 19808

Donations can be dropped off between 9 am – 4 pm, Monday – Friday.

Please contact us if you have any questions:

Blaine Breeding • blaine@familypromisede.org • (302) 998-2222 ext. 105

Supplies for families while they're in our shelter programs & when they move into their own housing

- Twin sheet sets
 - *New or lightly used*
- Twin-sized comforters
 - *New or lightly used*
- Pillows (new)
- Complete dish sets
 - *Complete sets should include at least 4 plates, 4 bowls, and 4 cups*
- Complete cutlery set
 - *Complete sets should include at least 4 forks, 4 spoons, and 4 knives*
- Towels
 - *New or lightly used*
- Inflatable mattresses — please contact us if you'd like to purchase one for a family!

Paper Supplies

- Toilet paper
- Paper towels

We also accept gift card donations! Contact us for more information.

Cleaning Supplies

- Hand Sanitizer
- Disinfecting wipe
- Disinfectant spray (like Lysol)
- All-purpose spray cleaner
- Fabuloso
- Laundry detergent
- Bleach
- Dish detergent and dishwasher tablets
- Toilet bowl cleaner
- Window cleaner
- Cleanser
- Sponges
- Swiffer
- Trash bags
- Carpet cleaner
- Drain opener
- Toilet brush
- Broom

Toiletries

- Toothbrushes (Fully stocked)
- Toothpaste (full size) (Fully stocked)
- Liquid hand soap
- Shower soap (if liquid, full size) (Fully stocked)
- Shampoo/conditioner (full size) (Fully stocked)
- Lotion (full size)

Supplies We Don't Currently Need

Thanks to our partnerships with other community organizations, we currently have these needs covered for our families! Due to our limited storage space, we kindly request that you direct your donations of these items to one of our partner organizations, such as Friendship House and Catholic Charities:

- Furniture, mattresses, and other large items
- Clothes
- Books
- Toys
- Appliances, kitchen tools, and other household goods

**NEW OPPORTUNITIES****Newark Senior Center
Volunteer Position Description****RECEPTION DESK VOLUNTEER****Purpose:**

- To make members and the public feel welcome by staffing the reception desk in a professional and cheery manner.

Responsibilities:


- Answer telephone in a pleasant, professional manner
- Register members for trips and activities.
- Provide information to members and the public about the Newark Senior Center offerings.
- Give tours of the Senior Center
- To properly record money and information for sign ups for all activities
- To provide information to people as they visit the reception desk and on the telephone.

Time Required:

- Monday through Friday
- 9:00 a.m. to 12:30 p.m. or 12:30 p.m. to 4:00 p.m.

Qualifications:

- Computer/Keyboard familiarity a plus.
- Customer service skills
- Phone skills
- Ability to handle money.



Partner reports
hours

Supervisor:

- Maura Jongebreur, Volunteer Coordinator, (302) 737-2336 X101

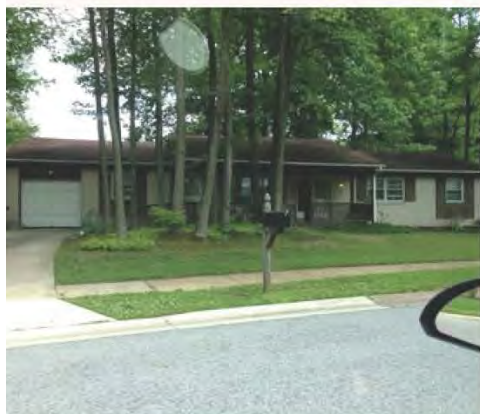
Benefits:

- Valuable work experience.
- Periodic volunteer appreciation events.
- Opportunity to meet many new people.
- Opportunity to be of service.

For more information, please contact Volunteer Delaware 50+ at 302-255-9878 or email Guadalupe.Murphy@delaware.gov

NEW OPPORTUNITIES

Days of Caring, Group Volunteer Work with NAMI Delaware's Housing Program



ABOUT:

Do you have a small group interested in giving an hour or two of your time to help with simple landscaping projects? NAMI Delaware's Housing Team would love to have you! There are a variety of locations and projects for volunteer teams to help with during the spring/summer and fall seasons.

Tasks May Include

- Pruning
- Mulching
- Trimming trees and bushes
- Painting Decks/Porches
- Raking Leaves

CONTACT US



**For more information, please contact
Volunteer Delaware 50+
at 302-255-9878 or email
Guadalupe.Murphy@delaware.gov**

ONGOING OPPORTUNITIES



Get in Touch!

If you're interested in volunteering, donating, or would like to learn more, contact us at:

302-998-2222
info@familypromisede.org



Every Child Deserves a Home

When families lose their homes, they shouldn't have to lose each other. Family Promise NNCC keeps families together when they experience homelessness and helps them quickly move into their own housing.

Our mission is to prevent and end homelessness for families by engaging volunteers, donors, and the faith community.

We envision a community in which every family has a home, a livelihood, and the resources for lasting independence. We believe in working with our community to end family homelessness. Challenges faced by our community require a community solution.

At any time, you can securely make a tax-deductible donation online at familypromisede.org or scan



facebook.com/FamilyPromiseDE

Instagram: @FamilyPromiseDE

Preventing & Ending Homelessness for Families



We serve over 150 families experiencing homelessness each year!

A Community Based Solution

Family homelessness is an issue

Families with children experiencing homelessness, account for 40% of all homeless in Delaware. One in three people experiencing homelessness in Delaware is a child.

Gap in services

The majority of shelters in the state have stipulations on the populations they serve (men only, women and children only etc.) Resources exist for homeless individuals, less so for families.

We take any family

We're the only shelter in Delaware that has always provided shelter and services to families with children regardless of their size, make-up, or composition.

We partner with local congregations

We're partnered with 45+ local congregations to provide meals and support for families experiencing homelessness. We're working with our neighbors to address family homelessness.

Diversified Programs

Hospitality Center

The Center provides needed temporary shelter for 8 families experiencing homelessness. We provide case management services to assist families addressing barriers to housing. Our team assists families to identify housing, pay for housing, and remain housed.

We partner with 45+ congregations that provide families with meals, hospitality, and activities 365 nights a year.

Pathway to Housing

This is a community based program that works with families in other situations of homelessness. Staff provide assistance and case management services to quickly house families.

Pathway to Diversion

Families are diverted from shelter altogether within 7-14 days by utilizing social resources and providing families direct assistance to secure/maintain their permanent housing.

You Can Make A Difference!

Volunteer

Provide meals, supplies, fellowship, or work on many one-time projects to keep our facility looking good.

Donate

Our programs are scalable. Your donation will directly help us serve more families!

Wish-list

Supply drives and in-kind donations support our programs. Contact us for current needs: Cleaning supplies, bedding, kitchen items.

Sponsorships

Local businesses can sponsor one of our many events. Make a corporate donation or engage in group volunteer activities!



ONGOING OPPORTUNITIES

Learn about PAWS pet therapy and how you can get involved on one of our free Zoom Sessions!



Can my pet be a PAWS pet-therapy companion?

Would you describe your pet as:

Sweet • People-Focused • Friendly • Affectionate • Gentle • Comforting

Can I share my pet with others?

Do you have a few hours each month to volunteer?

Would you like to work with children, elders, and adults with disabilities?

Do you really want to give something back?

Yes, you can! (And your pet can, too!)

Learn More & Register:

<https://www.pawsforpeople.org/YesYouCan>



2023 Fall Sessions

Thursday, September 28, 6:00 PM

Thursday, October 26, 4:00 PM

Thursday, November 9, 6:00 PM

For more information, please contact Volunteer Delaware 50+ at 302-255-9878 or email Guadalupe.Murphy@delaware.gov



ONGOING OPPORTUNITIES

Making Strides Volunteer Opportunities



The Making Strides Against Breast Cancer Volunteer Committee: The Volunteer Committee helps to lead and represent the innovative, diverse, and action-oriented community. They inspire positive change and care for those experiencing breast cancer through their leadership. Committee members will help to raise Breast Cancer awareness and work to connect to those in their network that can partner with or sponsor the Making Strides Against Breast Cancer event and movement.

- **Time Commitment:** 1 hour/month on our monthly meeting, plus an additional 2-4 hours/month spent on event-related tasks.
- **Benefits:** As a member, you get to participate in an exciting community event to raise awareness and funds to end breast cancer. You can choose to volunteer for the day-of the walk and Kickoff Party, in addition to using your skills to help plan & grow the event.
- **Main Focus Areas:** Event Experience and/or Making Connections
- **Meeting Location:** We meet virtually once a month! There are opportunities to be out in the community, such as by helping run our Kickoff Party, promoting Strides at community events, and at the walk itself.
- **Meeting Times:** one hour/month via Zoom, typically from 6:30 - 7:30 pm on a Tues, Wed, or Thurs evening.

Making Strides Against Breast Cancer of Delaware Event Volunteers Needed:

Sunday, October 23, 2023 / Bellevue State Park (Wilmington, DE)

Day-of Event Volunteer Roles: tinyurl.com/MSABC-Oct23

Relay for Life Volunteer Opportunities



Event Website: www.RelayForLife.org/Delaware

Event: Relay For Life of Central & Northern Delaware

Date: September 22-23, 2023 (Friday-Saturday)

Time: 6:00PM-6:00AM

Location: Connection Community Church, 4744 Summit Bridge Road, Middletown, DE 19709

Day of Event Volunteer Needs Sign Up: We are looking for day of event volunteers to help our event run smoothly. We will have trained committee members to ensure all volunteers are comfortable in their role. Please review the available slots below and click on the button to sign up.

Day-of event volunteer roles: tinyurl.com/RFL-Sep22

For more information, please contact Volunteer Delaware 50+ at 302-255-9878 or email Guadalupe.Murphy@delaware.gov

ONGOING OPPORTUNITIES

MEETING OF MINDS **PROGRAM VOLUNTEERS**

We are seeking volunteers to assist participants with program activities and help create a relaxing environment where participants feel at ease.

Volunteers are asked to commit to a minimum of 1 day/week from 10am-2pm.

FIND OUT HOW YOU CAN HELP:

Yojani Carvajal-Ayala

302-737-2336 ex 129

yojani@newarkseniorcenter.com

**ONGOING OPPORTUNITIES**

Volunteers Needed for Domestic Violence Court Program

Do you want to help victims of domestic violence in your community? CHILD, Inc.'s Domestic Violence Advocacy Program (DVAP) is seeking volunteers to assist victims with protective orders, safety planning, and resource identification.

CHILD, Inc.'s Advocacy program is in need of volunteer advocates who wish to help victims of domestic violence within the civil court system. Since its start, DVAP has relied heavily on volunteers to offer services and support to victims of domestic violence through the court advocacy program which is located within Family Court in each county of the state of Delaware.

Advocates are available to offer support for victims experiencing intimate partner violence and abusive power and control. Volunteers assist clients with creating appropriate safety plans based on the client's needs and concerns at our offices located in the Family Courthouse building. Advocates aid victims in filing Protection from Abuse (PFA) petitions and offer information regarding court hearings.

All Volunteer Advocates are valued members of our DVAP team; they are what makes our program as successful as it has been for many years.



**Stop Domestic
Violence**

For more information, please contact Volunteer Delaware 50+ at 302-255-9878 or email Guadalupe.Murphy@delaware.gov

ONGOING OPPORTUNITIES



Join us at our monthly get-togethers



**3rd Friday of every Month
10 - 11am**

**B'nai B'rith House
8000 Society Dr.
Claymont, DE 19703**

**For more information, call
302-255-9746 or email
Guadalupe.Murphy@delaware.gov**



Why Volunteer with Lutheran Community Services?

Lutheran Community Services (LCS) could not accomplish our mission without the help of our talented and **dedicated** volunteers!

We have multiple volunteer opportunities that are designed to align with an individual's diverse set of skills and talents. Want to have direct contact with client services? Great! Rather be behind the scenes support? Wonderful! Fall somewhere in between? We've got that too!

VOLUNTEER OPPORTUNITIES (Wilmington)

Pantry Operations Volunteer

- Food Stocking & Sorting: Assist in our pantries by unloading pallets of food, re-stocking shelves, and filling bags of groceries for shoppers.
- Pantry Sign-In: Help to register and manage clients as they arrive at our pantries.
- Food Rescue Drivers: Assist in picking up weekly donations from various local partners and delivering food to our pantries.

ONGOING OPPORTUNITIES



Delaware Food Farmacy Volunteer

- Drivers: Need back-up drivers for our van to deliver food to clients on Tuesdays and Wednesdays
- Packing: We need help packing customized food boxes on Mondays and possibly Tuesdays for delivery as we grow.

Garden Volunteer

Help with the upkeep and harvesting of our community garden. Produce is given to clients through our food pantries.

**For more information, please contact Volunteer Delaware 50+ at
302-255-9878 or email
Guadalupe.Murphy@delaware.gov**



ONGOING OPPORTUNITIES

**Spiritual Care Support Volunteer**

The Delaware Hospice @ Saint Francis Unit is looking for volunteer chaplains to join our team. For more information about our program, please contact Volunteer Coordinator, Rolonda Sutton-Greene at (302) 478-5707 or visit our website <https://www.delawarehospice.org/volunteer/>

**Our volunteer chaplains provide:**

- Spiritual support for patients and families
- An opportunity to pray and read with patients
- A calming presence and a safe space to talk

Our Mission: To keep people alive and safe, to help them through crises, and to connect them with relevant community resources.

Are you thinking about being a support person for someone you don't know? Then, look to volunteer with ContactLifeline and be a good listener for someone in need over the phone. The Crisis Helpline is located in Wilmington. Don't worry, you will be trained (in-person) to be a better listener for someone who needs you.

ContactLifeline crisis responder services are provided by professionally trained and supervised volunteers and professionals who respond anonymously and confidentially to human needs, state-wide, 24 hours a day.



For more information, please contact Volunteer Delaware 50+ at 302-255-9878 or email Guadalupe.Murphy@delaware.gov

ONGOING OPPORTUNITIES

accentCare™

The Role of Hospice Volunteers

Direct Patient Volunteers

When working with patients and families, the volunteers provide multiple services, including:

- Conversation and companionship
- Medication reminders, snack preparation, encouragement of fluids (if applicable)
- Life review and legacy projects
- Writing letters
- Engaging children in the home
- Walks with permission
- Listening to music and/or reading books
- Painting their nails
- Sitting at bedside in silent support/presence, holding hands
- Companionship to provide the caregiver a break
- Organization and review of collections of photos, newspaper clippings, baseball cards, stamps, etc.
- Support at the time of death and during bereavement
- Specialty volunteers depending on availability (i.e. massage therapy, reiki, pet therapy)

What Volunteers CAN do

- Remind someone to take medication
- Take patient for a walk if someone has already transferred the patient to the wheelchair
- Be an advocate for safety and pain issues
- Be an extra set of eyes and ears

What Volunteers CANNOT do

- Give medications
- Transfer patients
- Accept payments or gifts, or sell anything to our patients
- Provide personal care, such as:
 - Personal hygiene and toileting
 - Dressing
 - Transferring from bed to chair, and back

For more information, please contact
Volunteer Delaware 50+
 at 302-255-9878 or email
Guadalupe.Murphy@delaware.gov



Help us
 turn
 plastic
 bags
 into
 PLastic
 yARN
 (PLARN)

2023
 10-noon **PLARN PARTY**

BENEFITS BAGS2MATS FOR THE HOMELESS,
 A VOLUNTEER DELAWARE 50+ INITIATIVE

Newark Senior Center

200 Whitechapel Dr, Newark, 19713

2nd & 4th Wednesday of each month - Classroom 3



 @Bags2MatsDE



For more information about the
 Bags2Mats for the Homeless
 program, please visit us on
 Facebook or call 302-255-9746
 Guadalupe.Murphy@delaware.gov



Senior Roll Call Lifeline

is a free program
 provided by New Castle
 County, Division of
 Police, that makes daily
 calls to the homes of

our elderly or disabled members to
 ensure they are doing well and do not
 require emergency assistance. If after
 several attempts the calls are
 unsuccessful, emergency help is sent to
 the home to check on the well-being of
 the member.

For more information call 302-255-9878.



ONGOING OPPORTUNITIES

looking to volunteer
in a different capacity?
why not join one of our family
services committees ...

family selection volunteer committee member (Virtual)

the purpose choosing the families to own and occupy Habitat for Humanity is one of the most difficult and challenging aspects of this ministry. The Family Selection Committee is responsible for drafting the selection criteria used to select families for approval by the Board of Directors.

responsibilities

- attend orientation sessions (via zoom).
- interview prospective families.
- recommend applicant to the board of directors for approval.

Self report
hours

qualifications

- communicate well with applicants, staff and other family selection committee members.
- willing to make difficult decisions based on criteria.
- must be willing to visit unfamiliar neighborhoods with other committee members (not applicable at this time).
- understand requirements for habitat homeownership- the process, credit reports, etc.
- sensitivity to diverse groups of people, especially low-income earning people.
- must be able to be objective and have excellent people skills as well as interview skills.

commitment

- two-year commitment, 2- to- 4 hours per month depending on the number of applications received.



For more information, please contact Volunteer Delaware 50+ at 302-255-9878 or email Guadalupe.Murphy@delaware.gov

**ONGOING OPPORTUNITIES**

Urgent Need for CASA Volunteers

The Court Appointed Special Advocate Program (CASA) of Delaware is expanding its efforts to advocate for abused and neglected children. The number of children entering foster care continues to increase daily. The CASA Delaware program needs additional 200 volunteers to help advocate for these vulnerable children, and to ensure each child has a CASA volunteer by their side.

Currently, CASA Delaware only represents 50% of the children in foster care. Research shows that children with a CASA volunteer to advocate for them are:

- Less likely to re-enter foster care.
- More likely to find a safe, permanent home, spending less time in foster care.
- More likely to perform better in school.

CASA volunteers are trained members of the community who are appointed by a Family Court Judge to be a voice for Delaware's abused and neglected children. CASAs have varied professional, educational, and ethnic backgrounds. They are selected based on their objectivity, competence, and commitment. Each volunteer accepted into the program must complete 30 hours of initial training. Each CASA volunteer is supported by a CASA Program Coordinator and a Child Attorney to advocate for the best interests of children.

*The problems of child abuse and neglect belong to all of us.
Be part of the solution. Be a CASA volunteer.*

Statewide CASA Training Classes are forming now!

Scan the QR code to apply online.



CASA Delaware is a member of the National CASA/GAL Association for Children. To learn more about National CASA please visit <https://nationalcasagal.org/>.



For more information, please contact Volunteer Delaware 50+ at 302-255-9878 or email Guadalupe.Murphy@delaware.gov



Looking to support a mission of safe and affordable housing for Delawareans, all while staying inside, out of the cold? Come out and volunteer with us at Habitat for Humanity's ReStores! Our ReStores are public donation centers that help families build, rehabilitate and repair homes in the New Castle County area. By giving your time and talents, you can help the Habitat ReStore do more to support homebuilding projects that benefit families in your community!

At the ReStores, we look to engage volunteers with a variety of opportunities, including refurbishing of donations, creating decorative displays, organizing the donation dock and sales floor, and interacting with customers. All efforts are led by a fantastic team of ReStore staff and your fellow volunteers! We offer shifts at our ReStores Tuesday-Saturday, between 10am and 5pm. Shifts are from 10-2, 12-5 or an all day shift, but we're also very flexible on when you can come in! We have 2 locations, Wilmington and Middletown.



ONGOING OPPORTUNITIES

accentCare.

Volunteer your time and compassion — and make a big difference

Become a Virtual Bereavement Volunteer today

The needs of bereaved families and friends are unique — and our Virtual Bereavement Volunteers are there to support them.
This special group of volunteers offer much-needed support to these lower-risk loved ones by making phone calls, often on the anniversaries of deaths, providing important moments of "virtual" connection.

As a Virtual Bereavement Volunteer, you may also co-facilitate virtual services of remembrance and take part in virtual grief support groups — all from the comfort of your home. All our volunteers are trained to assess the needs, responses, and support systems of the bereaved, and provide documentation to help our psychosocial team determine any needed follow up care.

Volunteer with NAMI Delaware

HELPLINE VOLUNTEERS & SUPPORT GROUP FACILITATORS NEEDED

NAMI Delaware



NO PREVIOUS EXPERIENCE NECESSARY

Support Group facilitators must have lived experience as peers or family members.

For more information please visit:

www.namidelaware.org/join

REQUIREMENTS

- Must be passionate about supporting those living with mental illness and their families
- Able to listen to potentially difficult stories with empathy and compassion

ONGOING OPPORTUNITIES

Partner reports
hours



OPEN VOLUNTEER ROLES!!!

Donor Care and Staff Support (age 18+):

Want to be on the donation floor? Interact with donors and staff? Make the donation process better for both donor and staff? In this role you restock supplies staff need for donation process, hand out items donors need, and interact with donors so they feel seen and have someone there supporting them. Schedule sign up first come first serve after completion of application and training.

Community Outreach Ambassador (age 18+):

Enjoy people? Want to interact and share what BBD does with people in the community? You'll attend community events with information and training provided to share the needs and mission of BBD! Fun way to be with people and help BBD in saving lives. Training online and in person. Scheduled in advance variable upon community event dates.

Donor Refreshment/Canteen Center and/or Mobile (age 18+):

Enjoy people and staying active? Care for donors post-donation, chat with donors, serve snacks and drinks, and help donor feel cared for and appreciated. Active role, interact with people, restock, and sanitize tables. Training online and in person. Center schedules set and sign up with lead volunteer guidance, mobile drive schedules posted a month in advance first come first serve.

Greeter (age 15+):

Say hello to donors on way in, and thank on their way out of the blood center. Sanitize tablets, laminated reading material, and chairs, counter, etc. in registration area. Interact with donors, staff, and

volunteers. Schedule sign up first come first serve after completion of application and training.

Fundraising (age 18+):

Have experience in fundraising, enjoy data input, thank you letter preparation, or anything related to raising funds? We look forward to hearing what skills and experience you have to share!

Office Admin, Phone, and Related tasks (age 15+):

Are you an indoor office organizing type person? BBD has different types of roles: data entry, phone calls, letter mailing preparation, copying, scanning, shredding, and variety of other office computer related tasks. Let us know your skill set and experience!

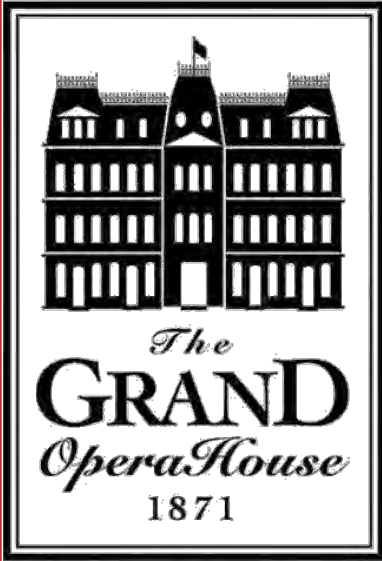
Photo and/or Video (age 15+):

Love to be behind the lens? Enjoy taking photos or shooting video? Maybe editing video? Creating short videos? Let us know what you love to do in this area.

**For more information, please
contact Volunteer Delaware 50+
at 302-255-9878 or email
Guadalupe.Murphy@delaware.gov**



ONGOING OPPORTUNITIES



SHOW CORPS VOLUNTEERS

The Grand Show Corps currently has over 200 volunteers, and we continue to grow thanks to people like you!

The Grand Opera House is a multi-level theater that presents world-renowned artists and a wide variety of entertainment. The baby grand is home of live at the baby grand as well as various community groups. The Playhouse on Rodney Square is home of Delaware's Broadway Experience.

The majority of our shows are scheduled in the evenings with some weekend afternoons. We also have occasional student performances during weekday mornings and afternoons.

Each member of the Show Corps is assigned to a squad and each squad is assigned to a show. Squad responsibilities include ticket-taking, ushering, coat-check, **bartending**, and patron safety. On average, each squad is scheduled three to five times a month. Those who are unable to volunteer during the weekdays due to full-time employment will not be asked to do so. Every volunteer is required to work all 3 theaters based on assignment.

For more information on how you can become a volunteer with the Grand Opera House, please contact Volunteer Delaware 50+ at 302-255-9878 or email Guadalupe.Murphy@delaware.gov



Meet diverse people and have fun while engaging in cross cultural activities in Delaware!



Promoting Peace through Understanding by fostering cross-cultural exchange and experiences.

info@ptpde.org

Bring your computer skills and volunteer from home to make an impact in our community on one of our many exciting committees.

Public Relations Committee

Create fliers and social posts, assist with mailing list and announcements

Skills: Canva and Mail Chimp

Program Committee

Brainstorm ideas for virtual and in person exchange programs, support tech in online meetings

Skills: Zoom

Fundraising Committee

Assist grant research & writing, foster philanthropic relations

Skills: Word, Excel, Google Docs/Sheets

Membership Committee

Increase public awareness, encourage partnerships, new membership and volunteers

Skills: Excel/Google Sheets

RESOURCES

DIAL 2.1.1 to get connected to local resources.

Bill Payment Assistance Disaster Services Education Employment & Financial Support Food Health Care Personal & Household Items Transportation

211 is here to help. **2.1.1**

DIAL 2-1-1 TEXT your zip code to 898-211 LEARN MORE delaware211.org

Powered by United Way of Delaware



Delaware Aging & Disability Resource Center

The Delaware ADRC is your one-stop access point for information, assistance, and referral to resources that support older Delawareans, adults with disabilities, and caregivers.

CONTACT DELAWARE ADRC

Phone: 1-800-223-9074 (toll-free)

Email: DelawareADRC@delaware.gov

DELAWARE REGIONAL DREAM CENTER
310 Ruthar Dr.
Units 9-10-11
Newark, De.
302-286-7406
DreamCenterDe.org

Boxes of Hope
Delaware Regional Dream Center

Move your mouse to view the photo in 3D

Weekly drive-thru food distribution, every Friday 10am-1pm.

**Dream Center
310 Ruthar Dr.
Newark 19711**

302-286-7406.

REPORT HARM OF VULNERABLE ADULTS

NEGLECT • ABUSE • EXPLOITATION

888-APS-4302



Delaware Adult Protective Services



"In 2021, anonymous reports helped protect 2,184 vulnerable adults from potential abuse; new hotline makes reporting neglect, abuse and exploitation easy and confidential."

With one simple phone call, concerned individuals and those experiencing harm can connect with free, voluntary services and resources that could save a life.

For more information about Adult Protective Services, including how to file a report, types of harm, and the resources and services available, visit dhss.delaware.gov/dsaapd/aps.