



33rd Annual

Community Paint-a-thon 2020

Paint Date
September 19

Rain Date: September 21

• IN PARTNERSHIP WITH •



A Brush with
Kindness

The Community Paint-a-thon



A UNIQUE COMMUNITY PARTNERSHIP

designed to paint the exterior of homes owned and occupied by persons with limited financial resources, who are at least 60 years of age or have a permanent disability, making them unable to do the work themselves.

Who Can Volunteer?

The Paint-a-thon is a major volunteer event. Teams of volunteers are recruited from businesses, churches, social service and civic groups.

All Paint-a-thon volunteers must be at least 14 years of age. Organized youth groups must provide one adult volunteer for every five youth volunteers.

CONTACT: Danzella Graham
donnie@handsonsuburbanchicago.org

Who Qualifies?

Older or disabled homeowners of single-family residences who are financially disadvantaged and who are physically unable to paint their homes themselves are eligible. The homes must be owner-occupied and in sufficient condition so that scraping and spot priming are the only preparations needed.

What Happens?

Once houses have been identified, inspected and the residents qualified, a team of volunteers from the community will be assigned to scrape, prime and paint each house. All homes are painted on the same day. **Team leaders must visit the homesite the week before Paint Day to do prep work such as scrape peeling paint, caulking and spot priming.** On Paint Day, teams are expected to meet in the morning and complete the project by the end of the day.

Catholic Charities serves as the Intake Agency and is responsible for screening applications, verifying income and determining financial eligibility. Catholic Charities does not discriminate on the basis of religion, sex, race, national origin, sexual preference or economic status. Valspar® Coatings is the paint partner.

For an application and/or additional information, please contact:

Catholic Charities
Attn.: Community Paint-a-thon
1801 W. Central Road
Arlington Heights, IL 60005-2410
Phone: (847) 253-5500
catholiccharities.net/ccnw

ELIGIBILITY REQUIREMENTS

- The house must be owned and occupied by person(s) 60 years of age and older, or with a permanent disability or a veteran, and who are unable to do the painting themselves.
- The house must be a single-family residence, occupied by its owner(s) and in need of paint.
- Only the **exterior** of the house may be painted as part of the Paint-a-thon.
- The house must not be larger than two stories or exceed 25 feet in height.
- The house must be structurally sound, not in need of major repairs and approved by an inspector.
- A homeowner or adult family member must be present when a volunteer team is at the home.
- The homeowner is not intending to sell the house within the next two years.

The household income must be within the following guidelines:

Household income:
Yearly - \$36,000*
Monthly - \$3,000*

***NOTE: Income is not the only criterion. Medical expenses and other special circumstances will be taken into consideration in determining financial eligibility.**

THANKS TO OUR

2019 Paint-a-thon Coordinating Committee & Supply Sponsors



10
TOWNSHIPS

- | | | |
|--------------|--------------|--------------|
| ● BARRINGTON | ● NEW TRIER | ● SCHAUMBURG |
| ● ELK GROVE | ● NILES | ● WHEELING |
| ● HANOVER | ● NORTHFIELD | |
| ● MAINE | ● PALATINE | |



**Denotes
Coordinating
Committee
Member**

AMITA Health Holy Family Medical Center

Arlington Countryside Church

Ascher Brothers Co., Inc.

Bercom

Boy Scout Troop #159

 Catholic Charities — NW Senior Services


 City of Des Plaines Health and Human Services

Corona Brushes, Inc.

Fellowes, Inc.

GE Healthcare

Glenbrook South High School Interact Club

 Habitat for Humanity Northern Fox Valley / A Brush with Kindness

 HandsOn Suburban Chicago

 Hanover Township Senior Services

Immanuel Lutheran Church — Palatine

JR Edwards Brushes and Rollers

Kingswood United Methodist Church — Buffalo Grove

Landford-Painting Division

Lindar Corp

 Niles Senior Center

 Palatine Township Senior Citizens Council

Piech Decorating

Craig Powers

Prince of Peace Church - Palatine

Rich Products

 Schaumburg Township

 Segerdahl Group

Sherwin Ace Hardware

Sherwin-Williams Company

ShurTech Brands

St. Thomas of Villanova Youth Group — Voices

Stevenson High School — Students Helping Soldiers

Team Donatelli

Team Glad To Be Here

The Learning House

US Cellular

 Valspar® Coatings

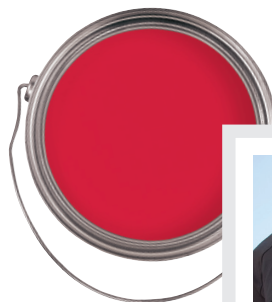
 Village of Wheeling / Pavilion Senior Center

WEIS Builders

 Wheeling Township

Wooster Brush Company

BE A PART OF THE
Community
Paint-a-thon



**SAVE THE
PAINT DATE**
**September
19**




33rd Annual
**Community
Paint-a-thon**
2020